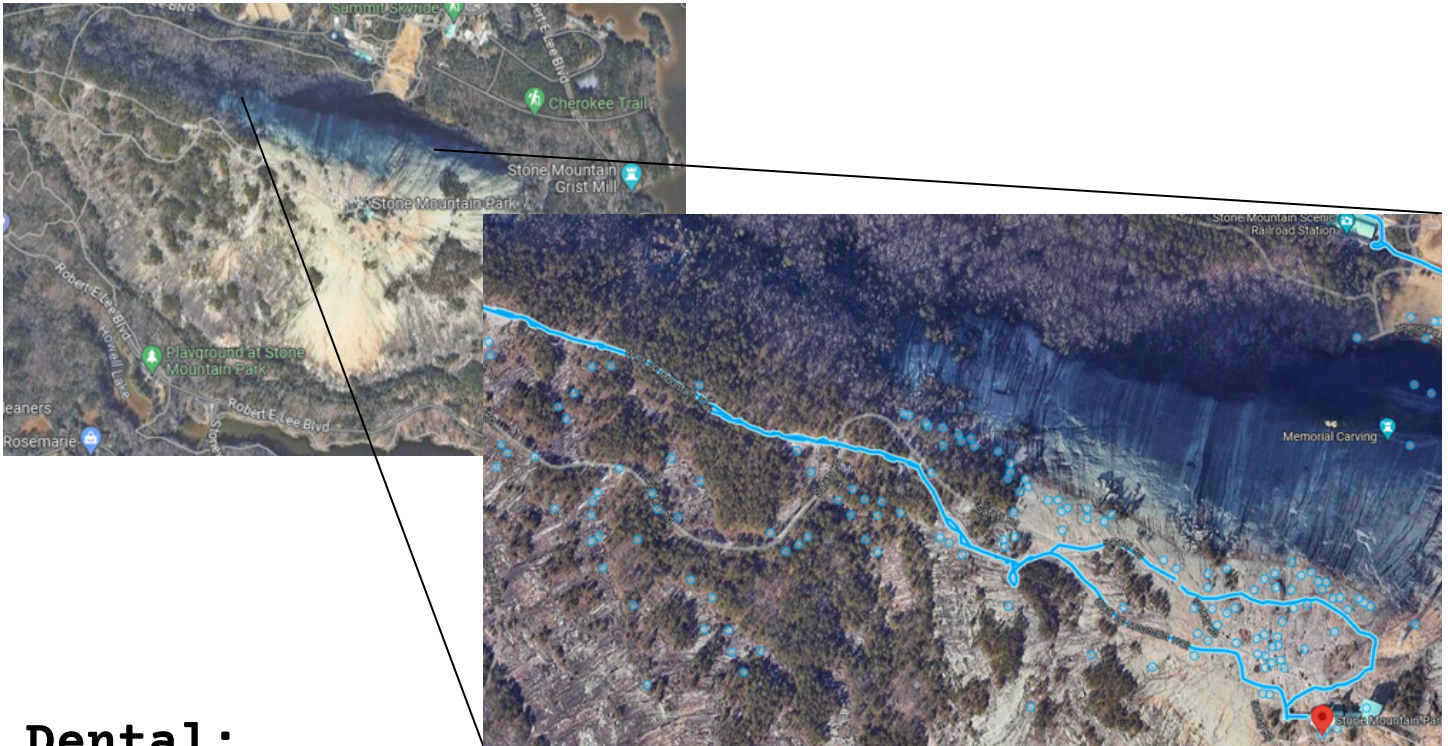


Additional Information

Case #95-0751

Location Found:

North side of Stone Mountain, West of the Carving



Dental:

- Stainless steel wire present in lower left jaw, indicating a previous repair of a fractured jaw
- Tooth #3 shows an amalgam restoration
- Pronounced gap between the upper front teeth
- Tooth #9 Missing, but the socket was healed over and it is believed the tooth had been missing for about a year.

Accompanying Case Numbers

- NamUs: #UP99231

Case Details

- This individual was found in a wooded area on the north side of the mountain, west of the carving. This location was about 300-400 ft south through the wooded incline to the base of the mountain.