
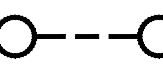
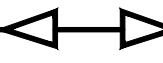

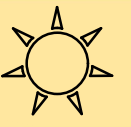


LEGEND

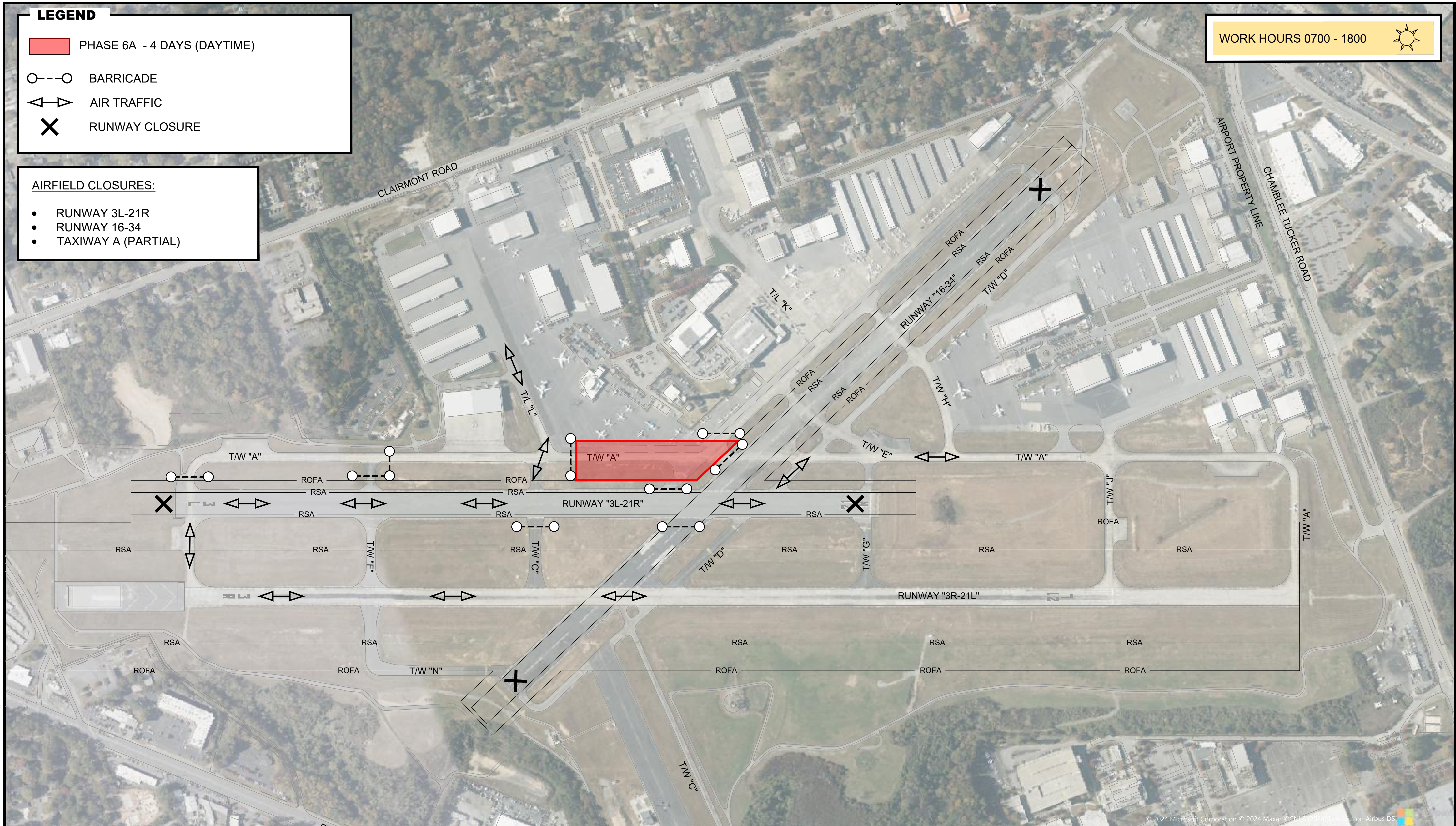
-  PHASE 6A - 4 DAYS (DAYTIME)
-  BARRICADE
-  AIR TRAFFIC
-  RUNWAY CLOSURE

WORK HOURS 0700 - 1800



AIRFIELD CLOSURES:

- RUNWAY 3L-21R
- RUNWAY 16-34
- TAXIWAY A (PARTIAL)



Y:\Airports\194883 - WA 23-03 Airfield Lighting - LED Design\Design\Dwg Exhibits\Tenant Phasing\PK - LED Phasing Breakdown.dwg Plotted on: Feb 04, 2025 - 1:37pm



DEKALB PEACHTREE AIRPORT
 DEKALB COUNTY, GEORGIA
 PDK - AIRFIELD LIGHTING - LED - PHASE 6A

EXHIBIT
1" = 250'



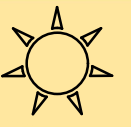
LEGEND

- PHASE 6B - 2 DAYS (DAYTIME)
- BARRICADE
- AIR TRAFFIC
- RUNWAY CLOSURE

AIRFIELD CLOSURES:

- RUNWAY 3L-21R
- TAXIWAY A (PARTIAL)

WORK HOURS 0700 - 1800



Y:\Airports\194883 - WA 23-03 Airfield Lighting - LED Design\Design\Dwg Exhibits\Tenant Phasing\POK - LED Phasing Breakdown.dwg Plotted on: Feb 04, 2025 - 1:36pm




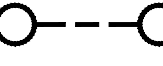
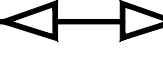

DEKALB PEACHTREE AIRPORT
DEKALB COUNTY, GEORGIA

PDK - AIRFIELD LIGHTING - LED - PHASE 6B

EXHIBIT
1" = 250'



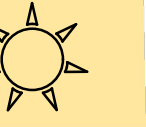
LEGEND

-  PHASE 6C - 2 DAYS (DAYTIME)
-  BARRICADE
-  AIR TRAFFIC
-  RUNWAY CLOSURE

AIRFIELD CLOSURES:

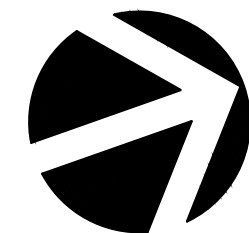
- RUNWAY 3L-21R
- TAXIWAY A (PARTIAL)

WORK HOURS 0700 - 1800



Y:\Airports\194883 - WA 23-03 Airfield Lighting - LED Design\Design\Dwg Exhibits\Tenant Phasing\POK - LED Phasing Breakdown.dwg Plotted on: Feb 04, 2025 - 1:36pm

Michael Baker
INTERNATIONAL


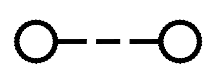
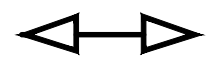



DEKALB PEACHTREE AIRPORT
DEKALB COUNTY, GEORGIA
PDK - AIRFIELD LIGHTING - LED - PHASE 6C

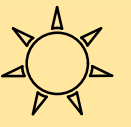
EXHIBIT
1" = 250'



LEGEND

-  PHASE 7A - 3 DAYS (DAYTIME)
-  BARRICADE
-  AIR TRAFFIC
-  RUNWAY CLOSURE

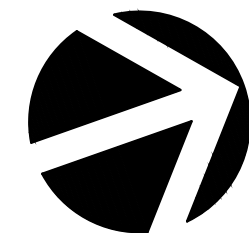
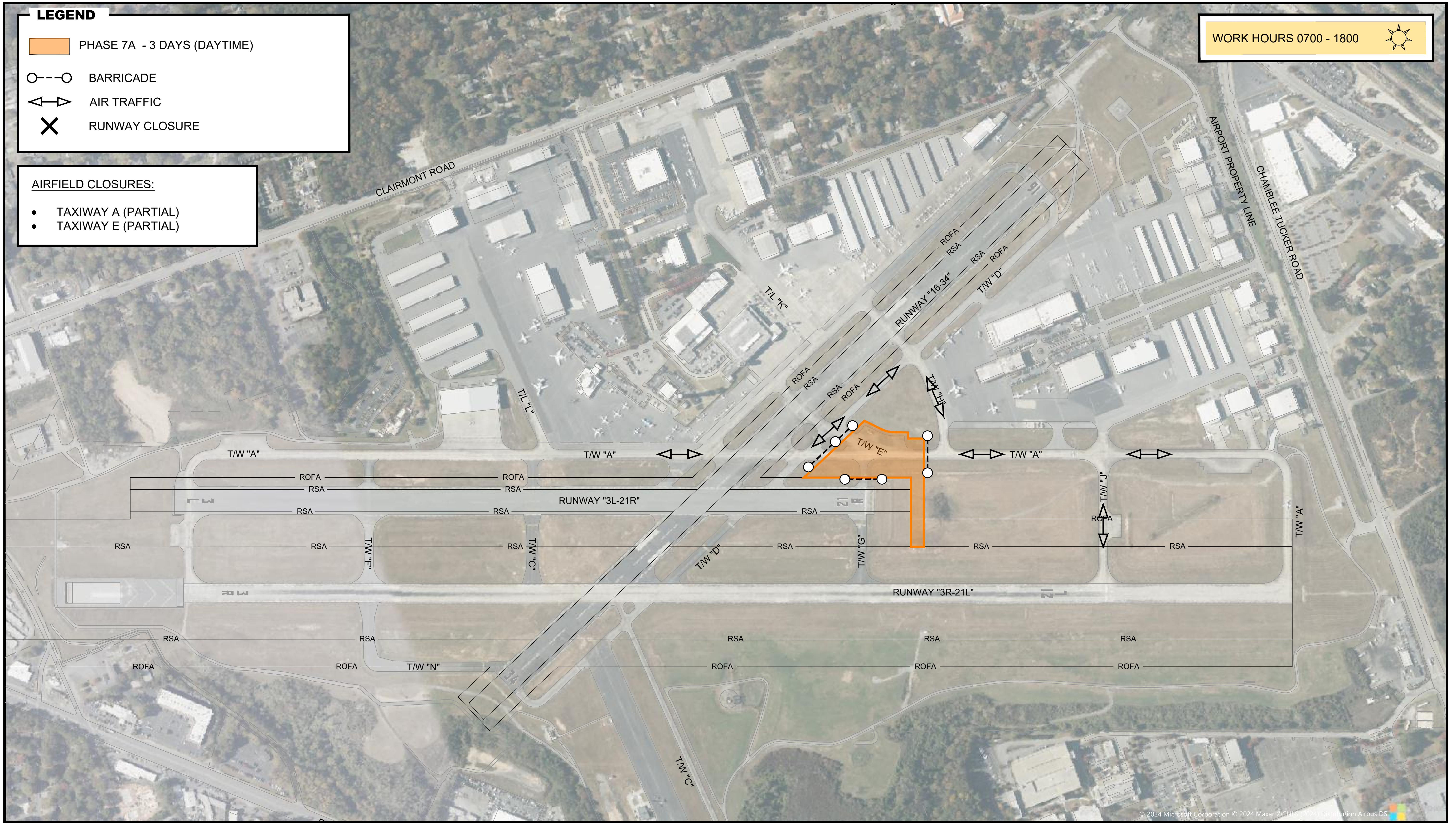
WORK HOURS 0700 - 1800



AIRFIELD CLOSURES:

- TAXIWAY A (PARTIAL)
- TAXIWAY E (PARTIAL)

Y:\Airports\194883 - WA 23-03 Airfield Lighting - LED Design\Design\Dwg Exhibits\Tenant Phasing\LED Phasing Breakdown.dwg Plotted on: Feb 04, 2025 - 1:36pm


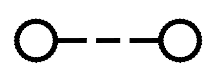
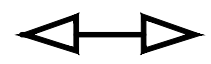



DEKALB PEACHTREE AIRPORT
 DEKALB COUNTY, GEORGIA
 PDK - AIRFIELD LIGHTING - LED - PHASE 7A

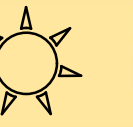
EXHIBIT
1" = 250'



LEGEND

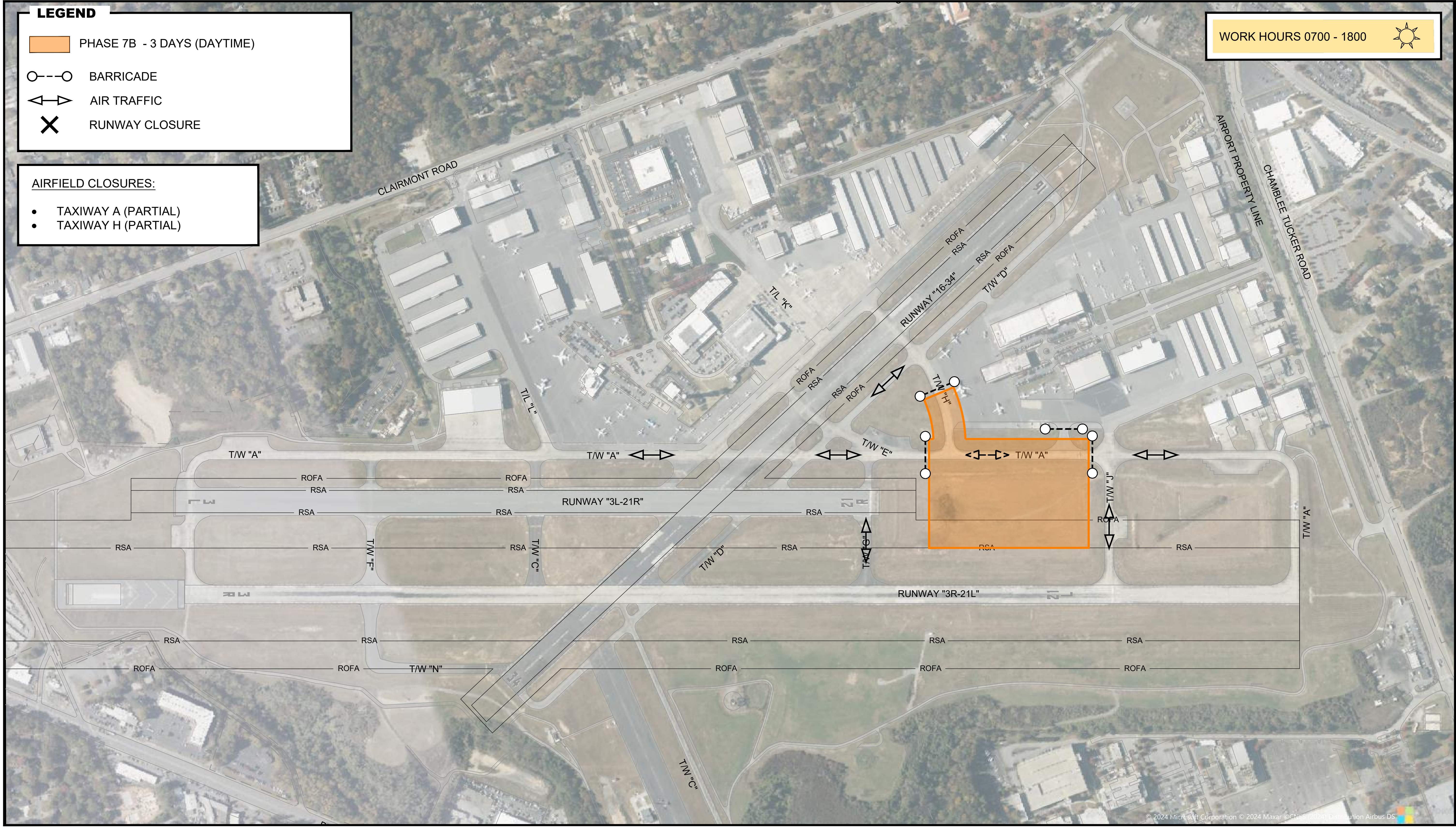
-  PHASE 7B - 3 DAYS (DAYTIME)
-  BARRICADE
-  AIR TRAFFIC
-  RUNWAY CLOSURE

WORK HOURS 0700 - 1800

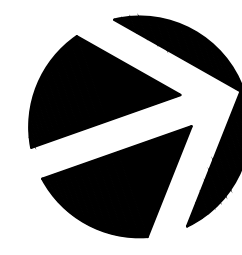


AIRFIELD CLOSURES:

- TAXIWAY A (PARTIAL)
- TAXIWAY H (PARTIAL)



Y:\Airports\194883 - WA 23-03 Airfield Lighting - LED Design\Design\Dwg Exhibits\Tenant Phasing\POK - LED Phasing Breakdown.dwg Plotted on: Feb 04, 2025 - 1:36pm




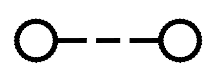
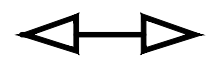

DEKALB PEACHTREE AIRPORT
DEKALB COUNTY, GEORGIA

PDK - AIRFIELD LIGHTING - LED - PHASE 7B

EXHIBIT
1" = 250'



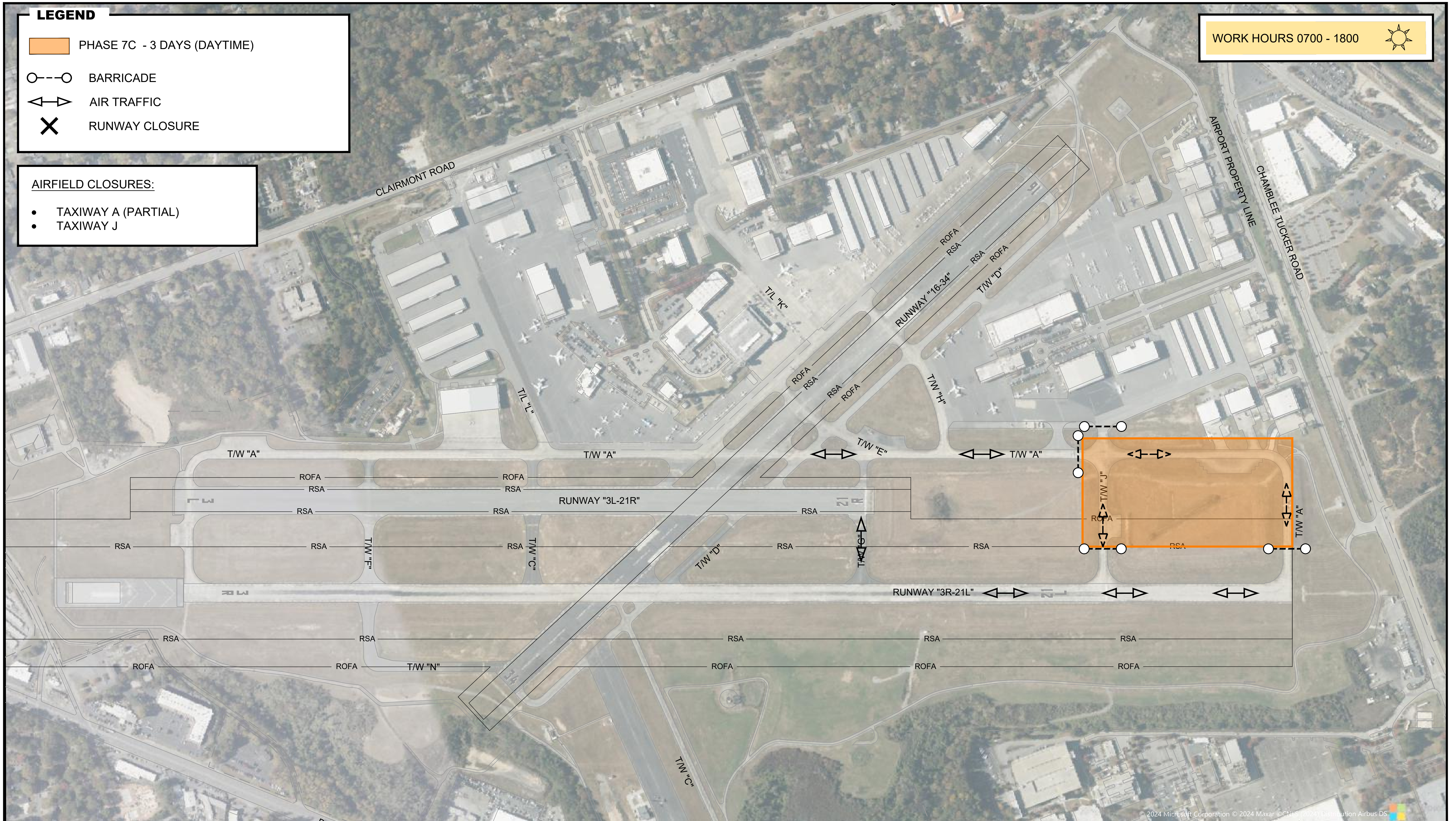
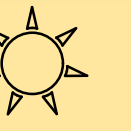
LEGEND

-  PHASE 7C - 3 DAYS (DAYTIME)
-  BARRICADE
-  AIR TRAFFIC
-  RUNWAY CLOSURE

AIRFIELD CLOSURES:

- TAXIWAY A (PARTIAL)
- TAXIWAY J

WORK HOURS 0700 - 1800



Y:\Airports\194883 - WA 23-03 Airfield Lighting - LED Design\Design\Dwg Exhibits\Tenant Phasing\LED Phasing Breakdown.dwg Plotted on: Feb 04, 2025 - 1:36pm




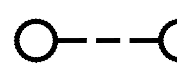


DEKALB PEACHTREE AIRPORT
 DEKALB COUNTY, GEORGIA
 PDK - AIRFIELD LIGHTING - LED - PHASE 7C

EXHIBIT
1" = 250'



Y:\Airports\194883 - WA 23-03 Airfield Lighting - LED Design\Design\Dwg\Exhibits\Tenant Phasing\POK - LED Phasing Breakdown.dwg Plotted on: Feb 04, 2025 - 1:36pm

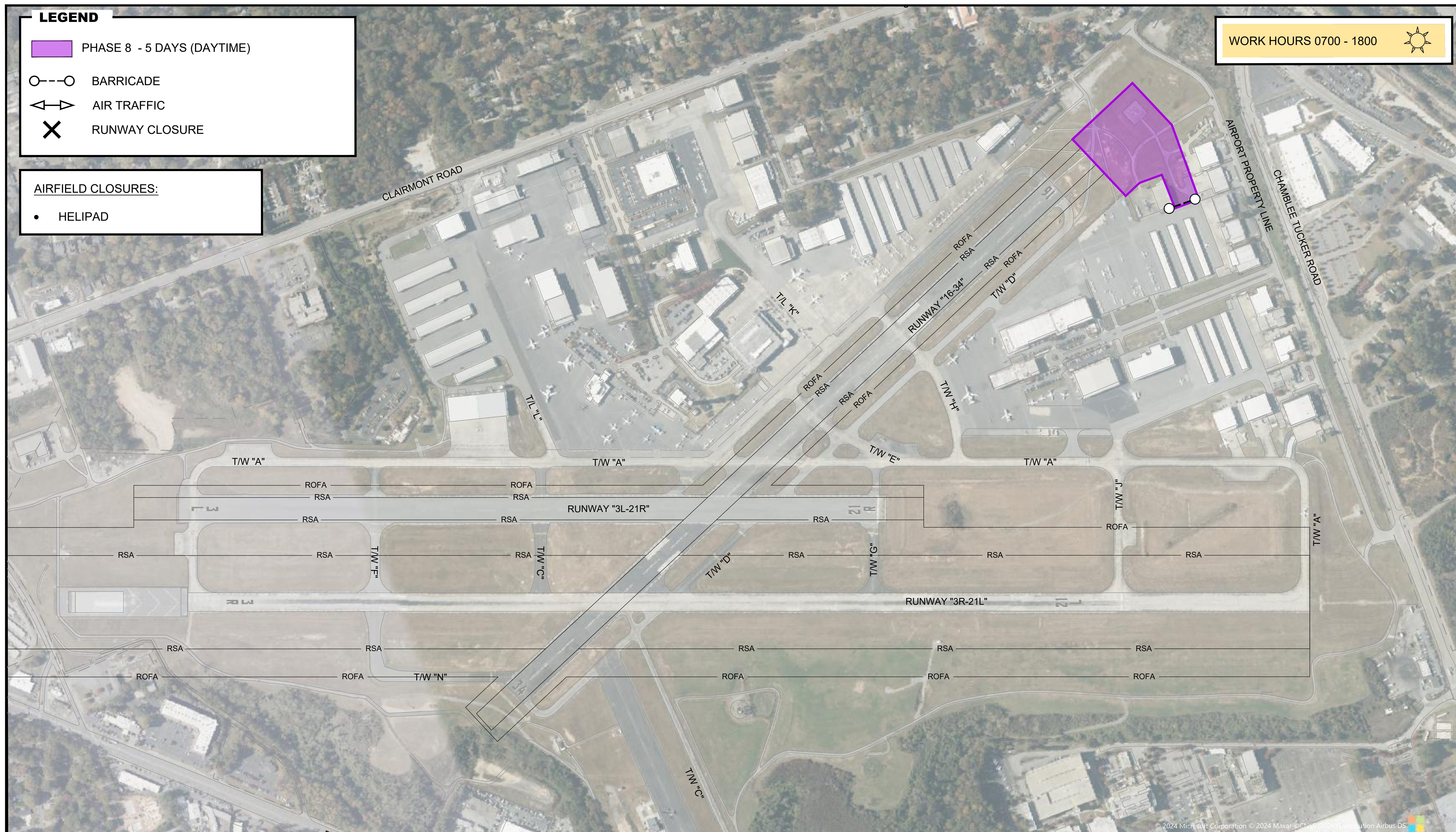
LEGEND

-  PHASE 8 - 5 DAYS (DAYTIME)
-  BARRICADE
-  AIR TRAFFIC
-  RUNWAY CLOSURE

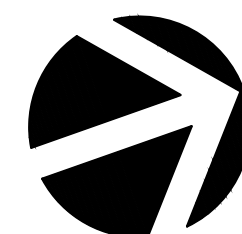
AIRFIELD CLOSURES:

- HELIPAD

WORK HOURS 0700 - 1800



Michael Baker
INTERNATIONAL



DEKALB PEACHTREE AIRPORT
DEKALB COUNTY, GEORGIA
PDK - AIRFIELD LIGHTING - LED - PHASE 8

EXHIBIT
1" = 250'

