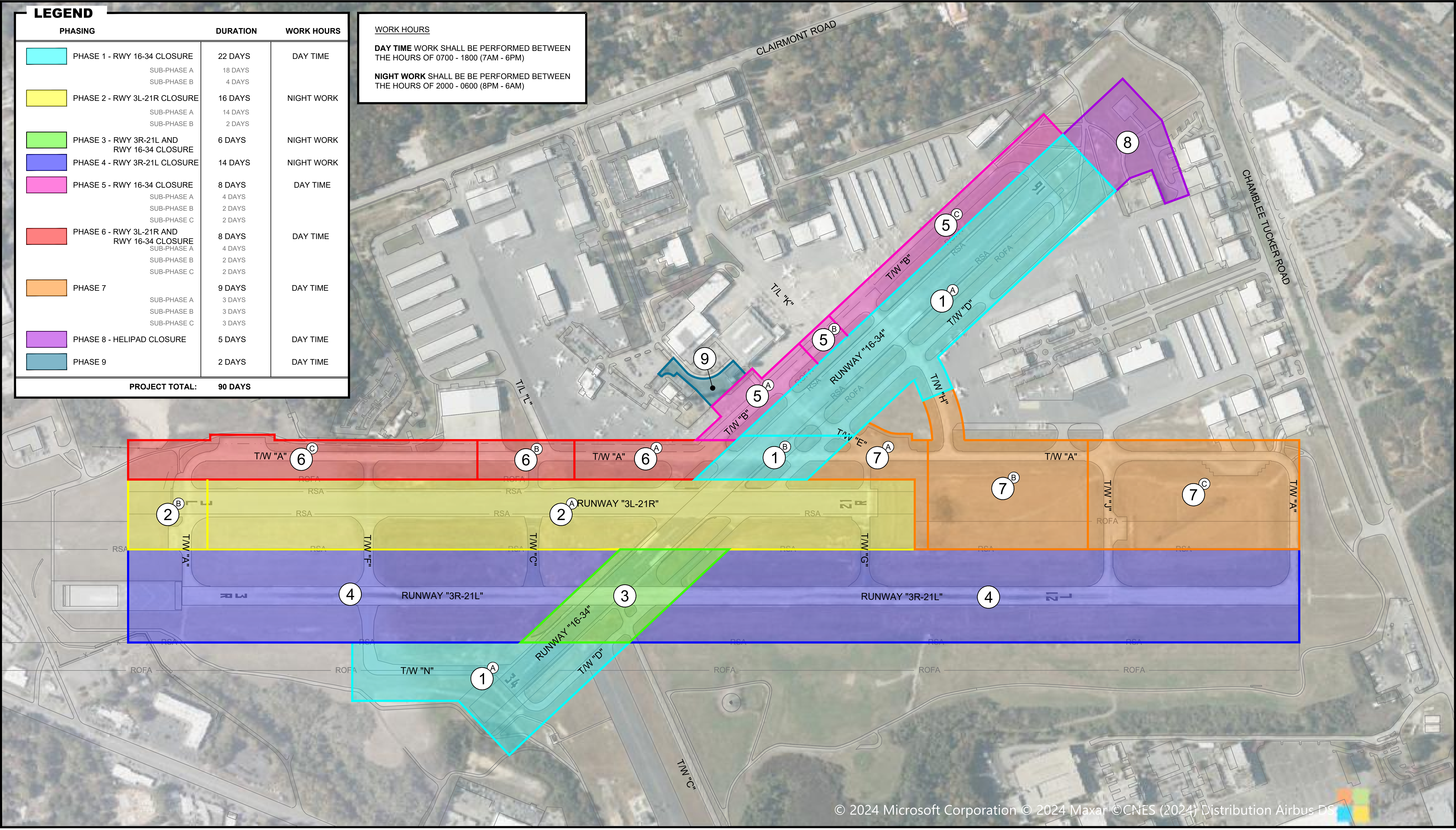


Y:\Airports\PDk\194883 - WA 23-03 Airfield Lighting - LED Design\Design\Dwg\Exhibits\Tenant Phasing\PDk - LED Phasing Overall.dwg Plotted on: Feb 04, 2025 - 1:33pm



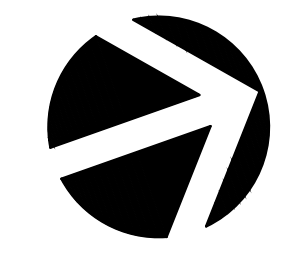
PHASING	DURATION	WORK HOURS
PHASE 1 - RWY 16-34 CLOSURE SUB-PHASE A 18 DAYS SUB-PHASE B 4 DAYS	22 DAYS	DAY TIME
PHASE 2 - RWY 3L-21R CLOSURE SUB-PHASE A 14 DAYS SUB-PHASE B 2 DAYS	16 DAYS	NIGHT WORK
PHASE 3 - RWY 3R-21L AND RWY 16-34 CLOSURE	6 DAYS	NIGHT WORK
PHASE 4 - RWY 3R-21L CLOSURE	14 DAYS	NIGHT WORK
PHASE 5 - RWY 16-34 CLOSURE SUB-PHASE A 4 DAYS SUB-PHASE B 2 DAYS SUB-PHASE C 2 DAYS	8 DAYS	DAY TIME
PHASE 6 - RWY 3L-21R AND RWY 16-34 CLOSURE SUB-PHASE A 4 DAYS SUB-PHASE B 2 DAYS SUB-PHASE C 2 DAYS	8 DAYS	DAY TIME
PHASE 7 SUB-PHASE A 3 DAYS SUB-PHASE B 3 DAYS SUB-PHASE C 3 DAYS	9 DAYS	DAY TIME
PHASE 8 - HELIPAD CLOSURE	5 DAYS	DAY TIME
PHASE 9	2 DAYS	DAY TIME
PROJECT TOTAL:	90 DAYS	

WORK HOURS

DAY TIME WORK SHALL BE PERFORMED BETWEEN THE HOURS OF 0700 - 1800 (7AM - 6PM)

NIGHT WORK SHALL BE PERFORMED BETWEEN THE HOURS OF 2000 - 0600 (8PM - 6AM)

© 2024 Microsoft Corporation © 2024 Maxar © CNES (2024) Distribution Airbus DS



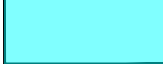
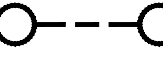
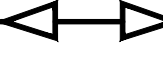

DEKALB PEACHTREE AIRPORT
 DEKALB COUNTY, GEORGIA

PDK - AIRFIELD LIGHTING - LED - OVERALL PHASING

EXHIBIT
 1" = 250'



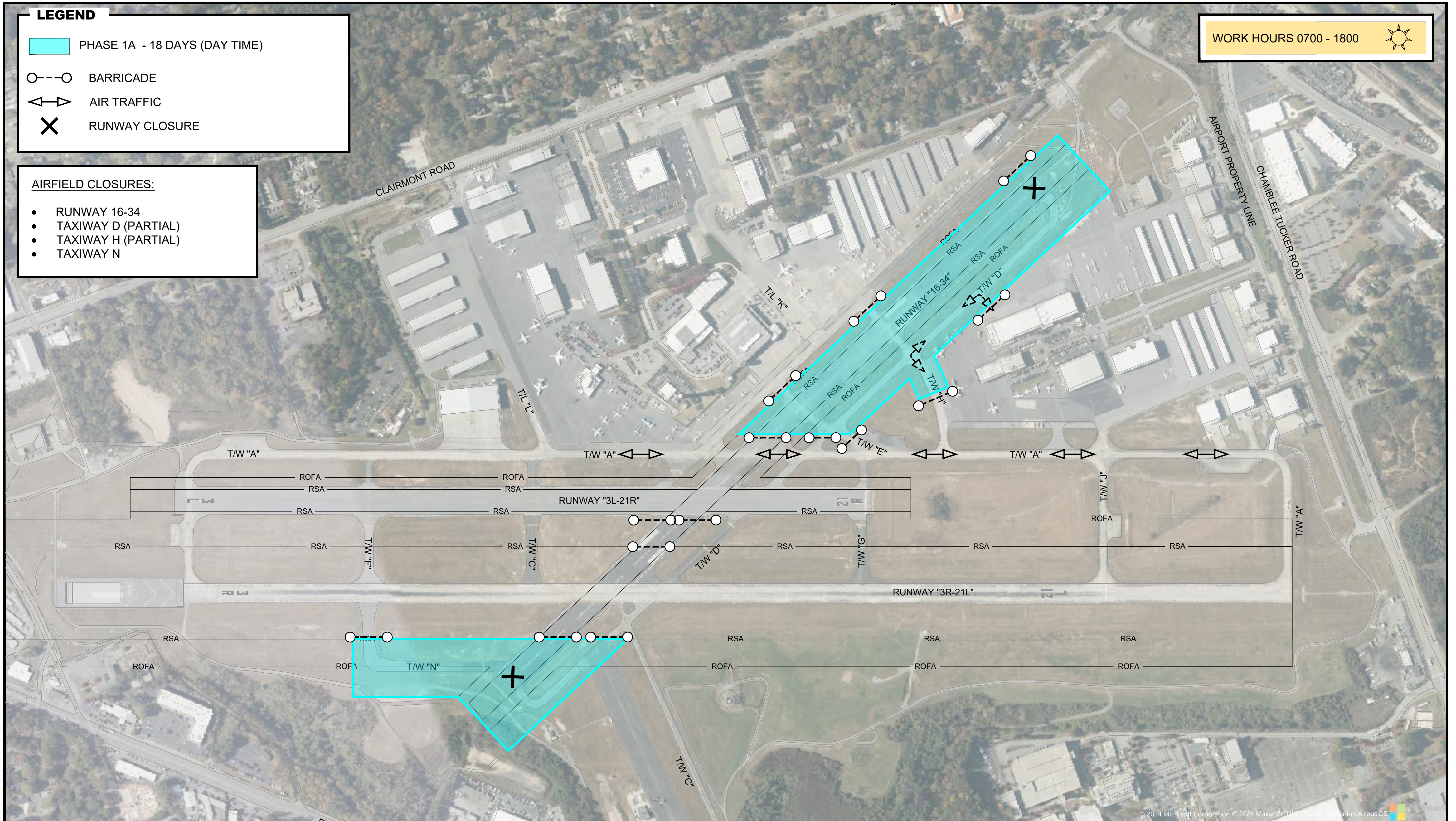
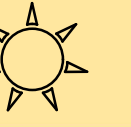
LEGEND

-  PHASE 1A - 18 DAYS (DAY TIME)
-  BARRICADE
-  AIR TRAFFIC
-  RUNWAY CLOSURE

AIRFIELD CLOSURES:

- RUNWAY 16-34
- TAXIWAY D (PARTIAL)
- TAXIWAY H (PARTIAL)
- TAXIWAY N

WORK HOURS 0700 - 1800



Y:\Airports\194883 - WA 23-03 Airfield Lighting - LED Design\Design\Dwg\Exhibits\Tenant Phasing\POK - LED Phasing Breakdown.dwg Plotted on: Feb 04, 2025 - 1:36pm


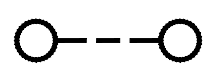
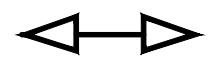



DEKALB PEACHTREE AIRPORT
 DEKALB COUNTY, GEORGIA
 PDK - AIRFIELD LIGHTING - LED - PHASE 1A

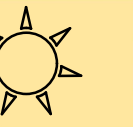
EXHIBIT
 1" = 250'



LEGEND

-  PHASE 1B - 4 DAYS (DAY TIME)
-  BARRICADE
-  AIR TRAFFIC
-  RUNWAY CLOSURE

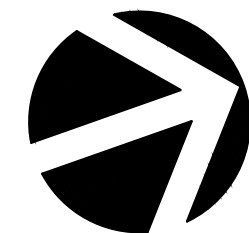
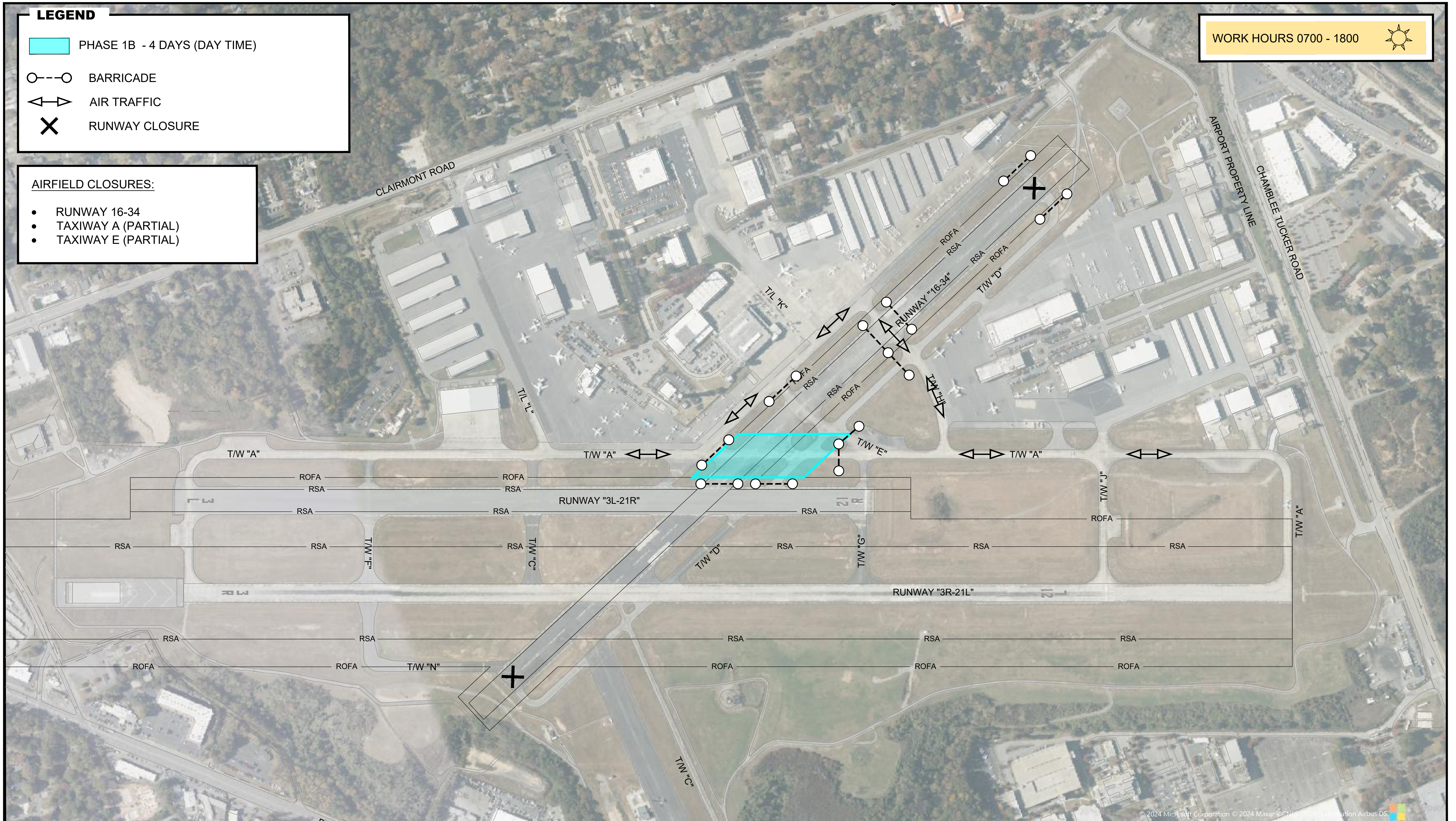
WORK HOURS 0700 - 1800



AIRFIELD CLOSURES:

- RUNWAY 16-34
- TAXIWAY A (PARTIAL)
- TAXIWAY E (PARTIAL)

Y:\Airports\194883 - WA 23-03 Airfield Lighting - LED Design\Design\Dwg Exhibits\Tenant Phasing\POK - LED Phasing Breakdown.dwg Plotted on: Feb 04, 2025 - 1:36pm




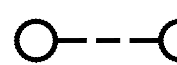


DEKALB PEACHTREE AIRPORT
 DEKALB COUNTY, GEORGIA
 PDK - AIRFIELD LIGHTING - LED - PHASE 1B


EXHIBIT
1" = 250'



Y:\Airports\194883 - WA 23-03 Airfield Lighting - LED Design\Design\Dwg\Exhibits\Tenant Phasing\LED Phasing Breakdown.dwg Plotted on: Feb 04, 2025 - 1:36pm

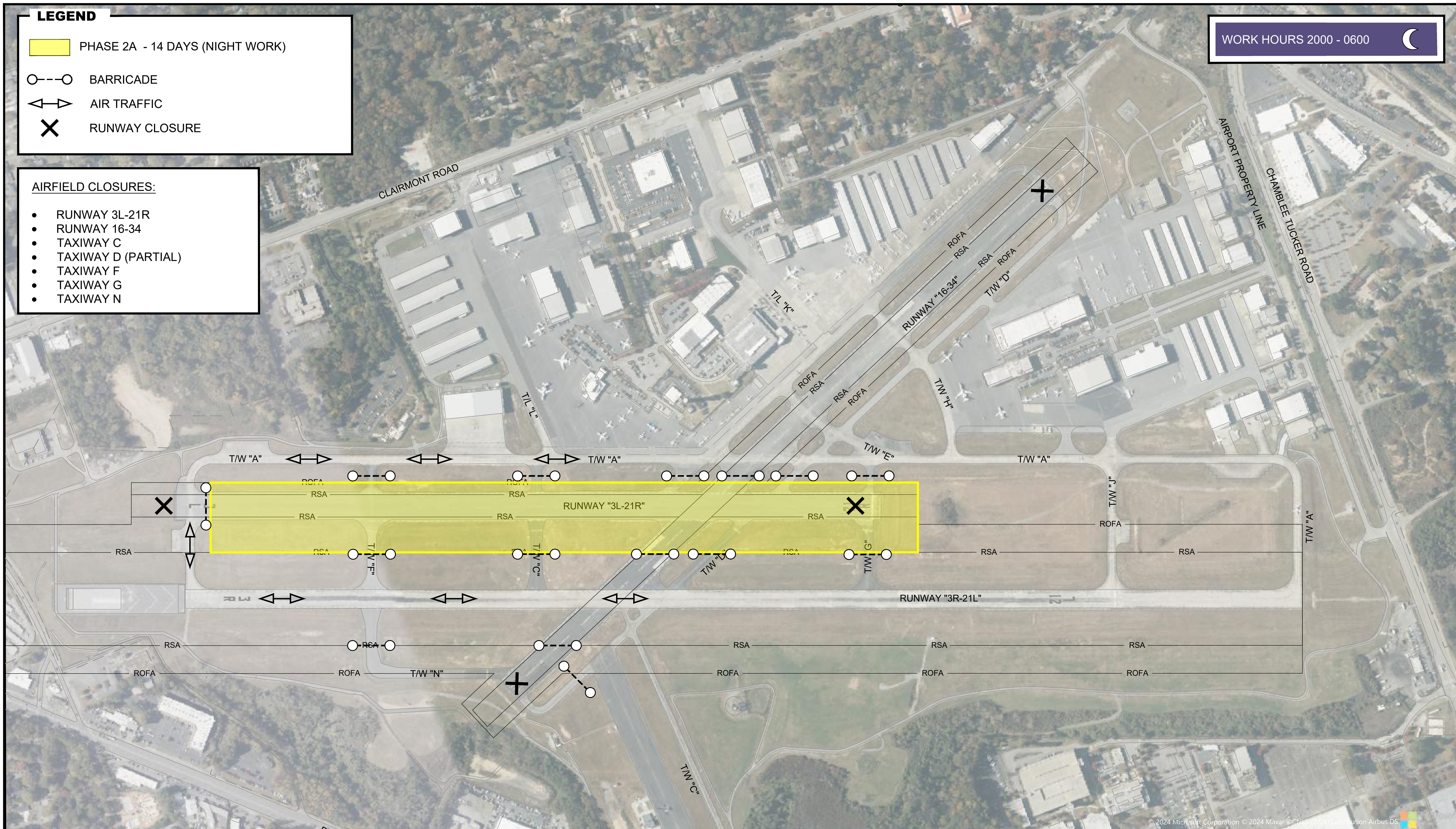
LEGEND

-  PHASE 2A - 14 DAYS (NIGHT WORK)
-  BARRICADE
-  AIR TRAFFIC
-  RUNWAY CLOSURE

WORK HOURS 2000 - 0600 

AIRFIELD CLOSURES:

- RUNWAY 3L-21R
- RUNWAY 16-34
- TAXIWAY C
- TAXIWAY D (PARTIAL)
- TAXIWAY F
- TAXIWAY G
- TAXIWAY N



Michael Baker
INTERNATIONAL

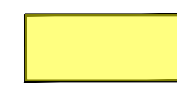


DEKALB PEACHTREE AIRPORT
DEKALB COUNTY, GEORGIA
PDK - AIRFIELD LIGHTING - LED - PHASE 2A

EXHIBIT
1" = 250'



LEGEND

 PHASE 2B - 2 DAYS (NIGHT WORK)

 BARRICADE

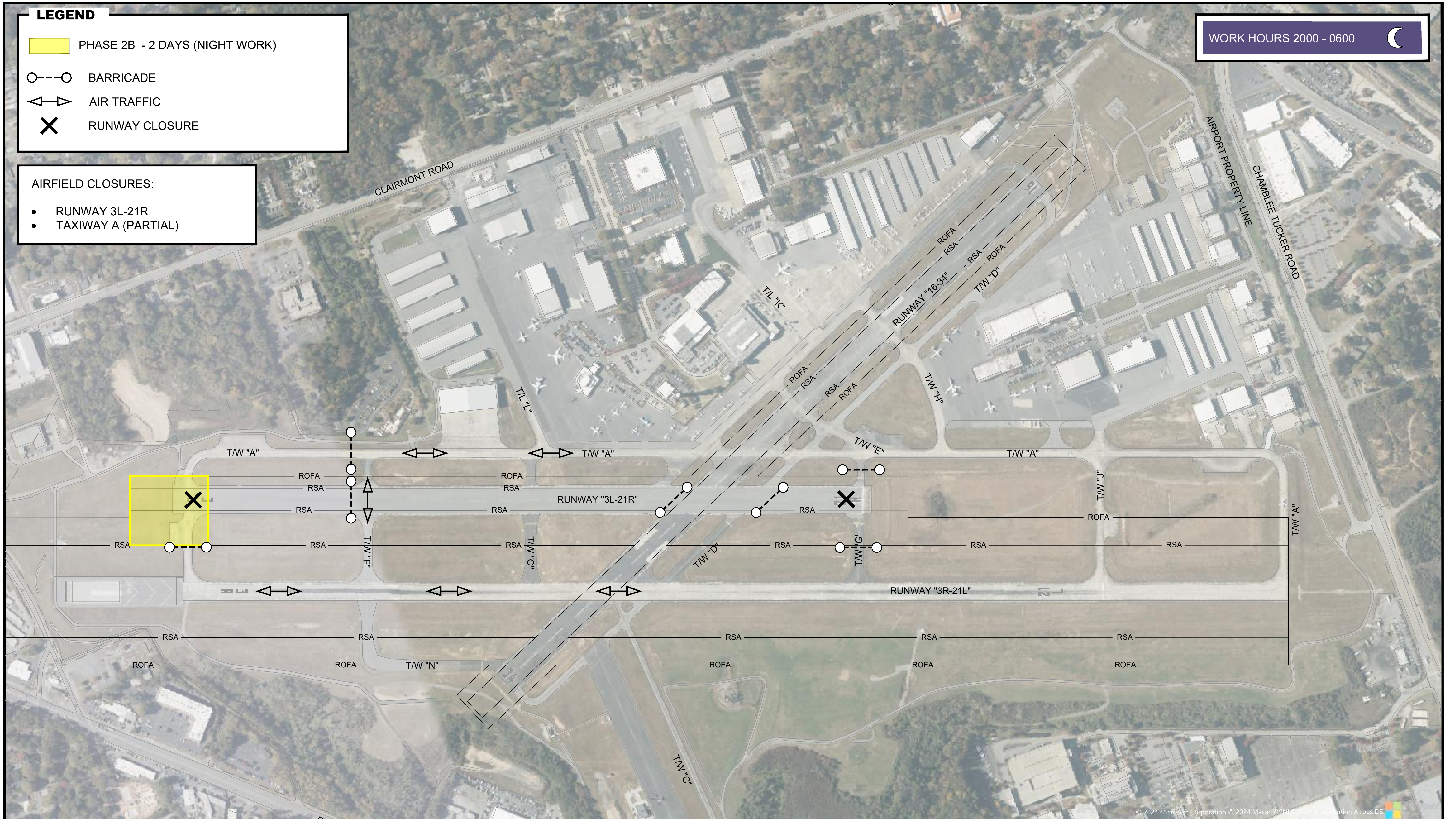
 AIR TRAFFIC

 RUNWAY CLOSURE

WORK HOURS 2000 - 0600 

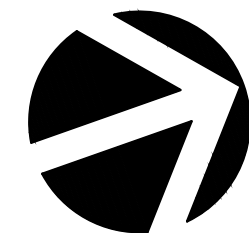
AIRFIELD CLOSURES:

- RUNWAY 3L-21R
- TAXIWAY A (PARTIAL)



Y:\Airports\PDK\194883 - WA 23-03 Airfield Lighting - LED Design\Design\Dwg\Exhibits\Tenant Phasing\PDK - LED Phasing Breakdown.dwg Plotted on: Feb 04, 2025 - 1:36pm

Michael Baker
INTERNATIONAL


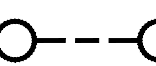
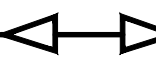




DEKALB PEACHTREE AIRPORT
DEKALB COUNTY, GEORGIA
PDK - AIRFIELD LIGHTING - LED - PHASE 2B

EXHIBIT
1" = 250'



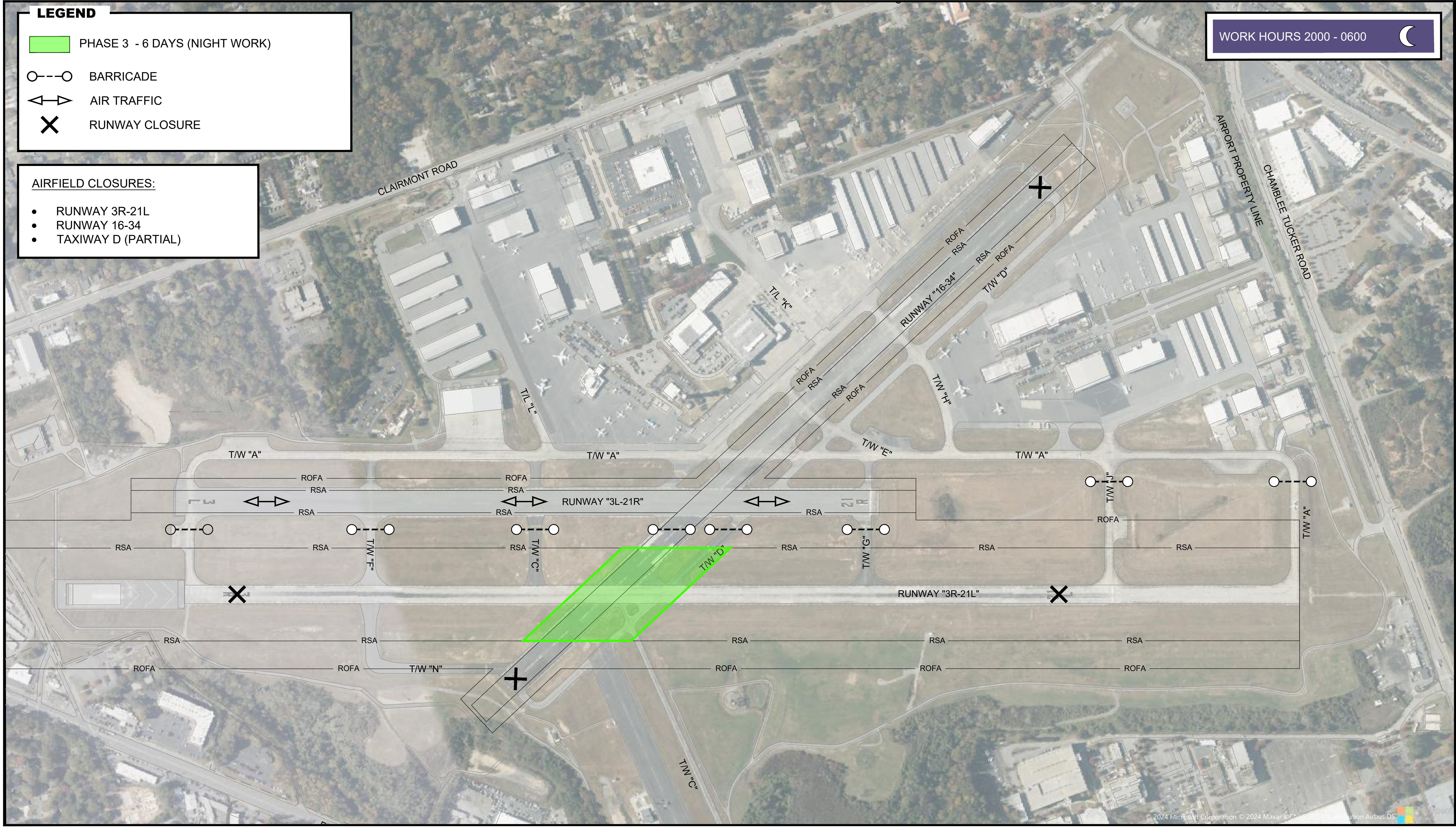
LEGEND

-  PHASE 3 - 6 DAYS (NIGHT WORK)
-  BARRICADE
-  AIR TRAFFIC
-  RUNWAY CLOSURE

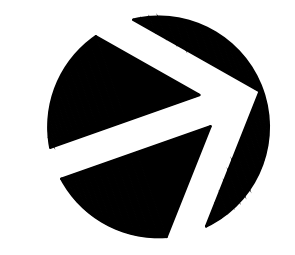
WORK HOURS 2000 - 0600 

AIRFIELD CLOSURES:

- RUNWAY 3R-21L
- RUNWAY 16-34
- TAXIWAY D (PARTIAL)



Y:\Airports\194883 - WA 23-03 Airfield Lighting - LED Design\Design\Dwg Exhibits\Tenant Phasing\POK - LED Phasing Breakdown.dwg Plotted on: Feb 04, 2025 - 1:37pm


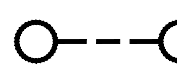





DEKALB PEACHTREE AIRPORT
 DEKALB COUNTY, GEORGIA
 PDK - AIRFIELD LIGHTING - LED - PHASE 3

EXHIBIT
 1" = 250'



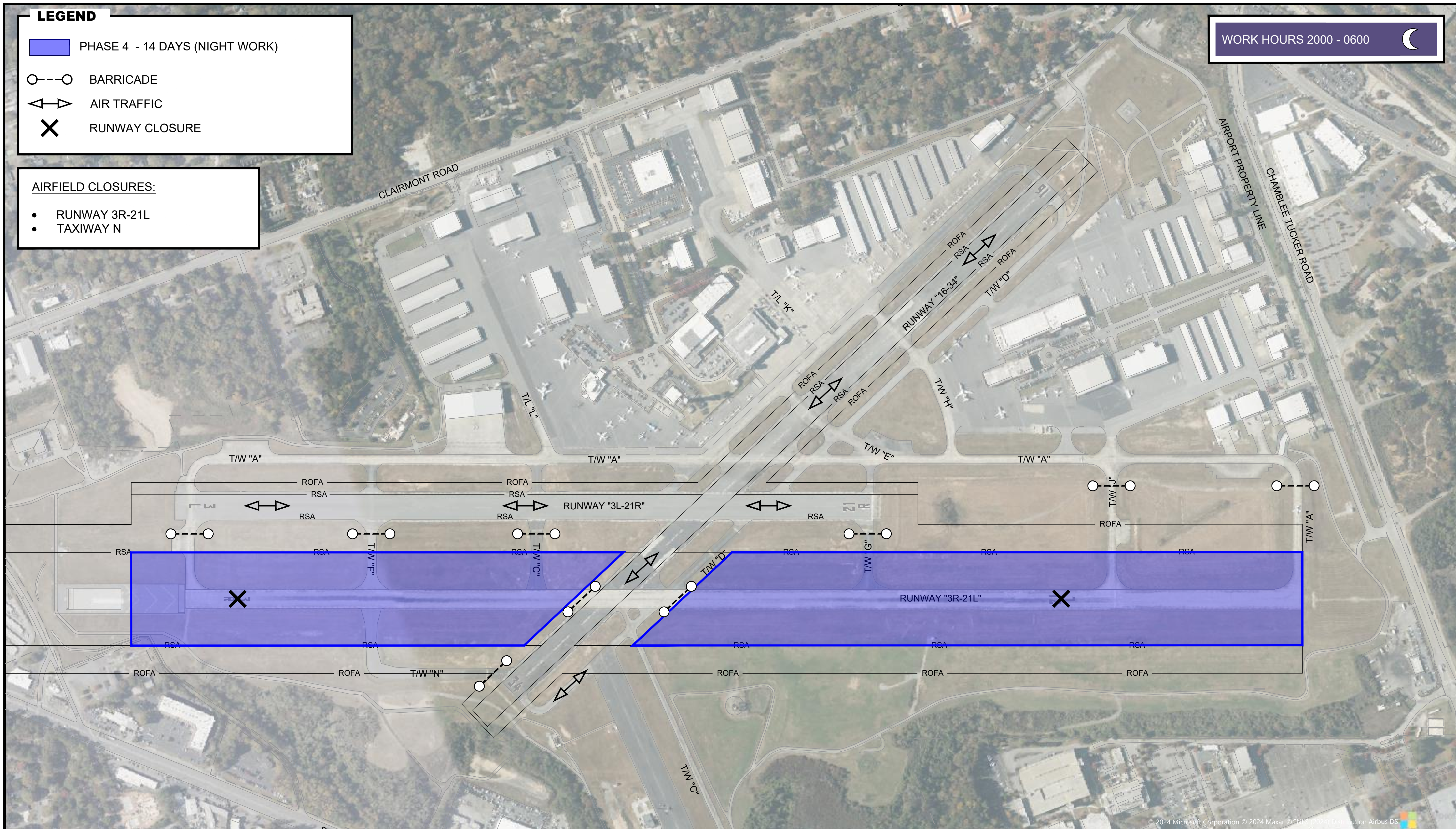
LEGEND

-  PHASE 4 - 14 DAYS (NIGHT WORK)
-  BARRICADE
-  AIR TRAFFIC
-  RUNWAY CLOSURE

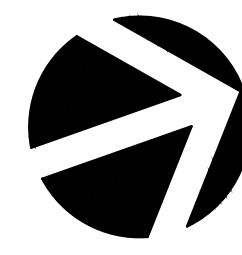
WORK HOURS 2000 - 0600 

AIRFIELD CLOSURES:

- RUNWAY 3R-21L
- TAXIWAY N



Y:\Airports\194883 - WA 23-03 Airfield Lighting - LED Design\Design\Dwg\Exhibits\Tenant Phasing\POK - LED Phasing Breakdown.dwg Plotted on: Feb 04, 2025 - 1:37pm



DEKALB PEACHTREE AIRPORT
 DEKALB COUNTY, GEORGIA
 PDK - AIRFIELD LIGHTING - LED - PHASE 4

EXHIBIT
1" = 250'



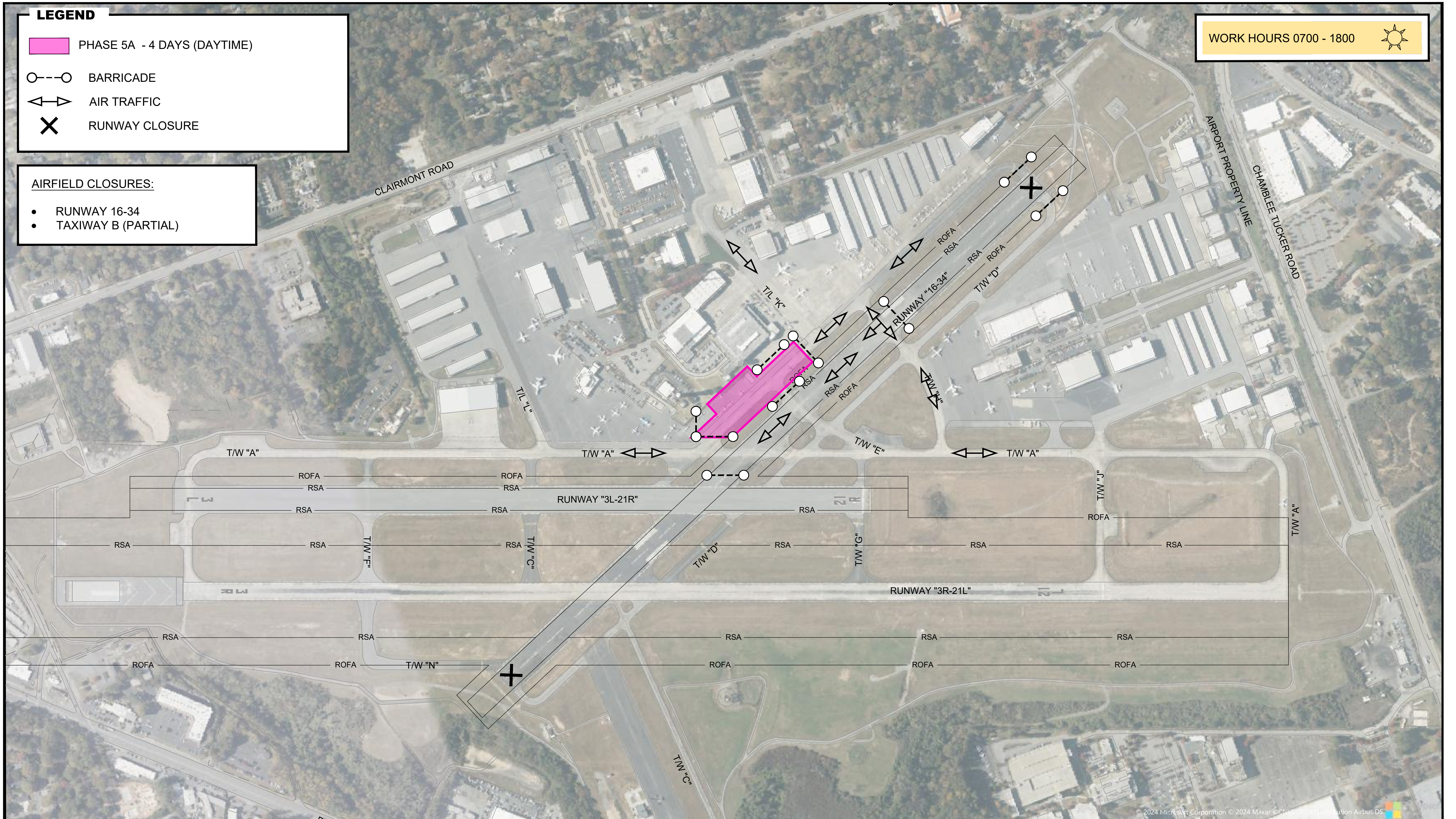
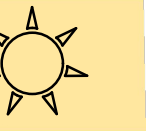
LEGEND

- PHASE 5A - 4 DAYS (DAYTIME)
- BARRICADE
- AIR TRAFFIC
- RUNWAY CLOSURE

AIRFIELD CLOSURES:

- RUNWAY 16-34
- TAXIWAY B (PARTIAL)

WORK HOURS 0700 - 1800



Y:\Airports\194883 - WA 23-03 Airfield Lighting - LED Design\Design\Dwg Exhibits\Tenant Phasing\POK - LED Phasing Breakdown.dwg Plotted on: Feb 04, 2025 - 1:37pm



DEKALB PEACHTREE AIRPORT
DEKALB COUNTY, GEORGIA

PDK - AIRFIELD LIGHTING - LED - PHASE 5A

EXHIBIT
1" = 250'



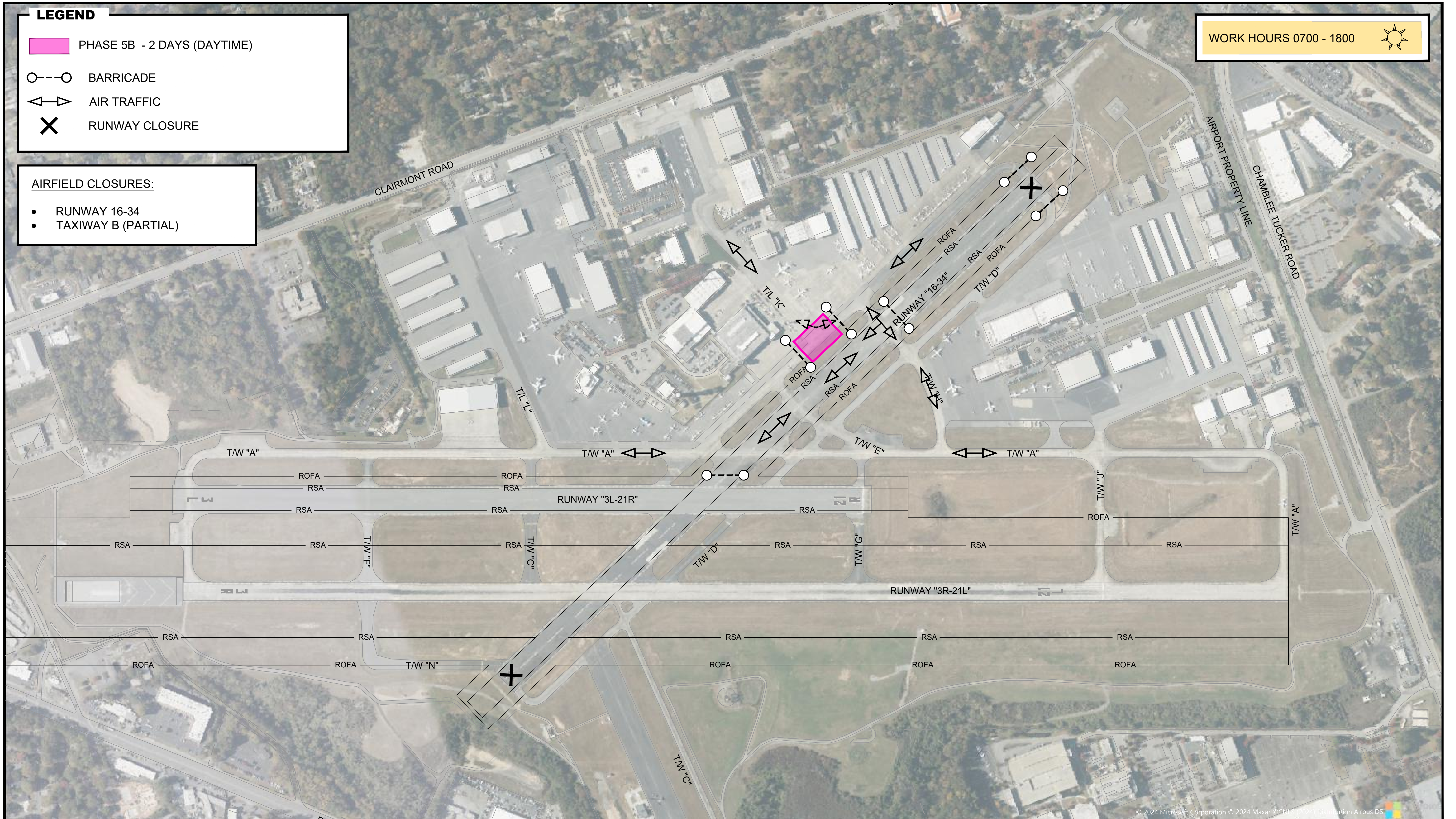
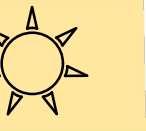
LEGEND

- PHASE 5B - 2 DAYS (DAYTIME)
- BARRICADE
- AIR TRAFFIC
- X RUNWAY CLOSURE

AIRFIELD CLOSURES:

- RUNWAY 16-34
- TAXIWAY B (PARTIAL)

WORK HOURS 0700 - 1800



Y:\Airports\194883 - WA 23-03 Airfield Lighting - LED Design\Design\Dwg Exhibits\Tenant Phasing\PK - LED Phasing Breakdown.dwg Plotted on: Feb 04, 2025 - 1:37pm


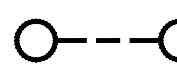




DEKALB PEACHTREE AIRPORT
 DEKALB COUNTY, GEORGIA
 PDK - AIRFIELD LIGHTING - LED - PHASE 5B

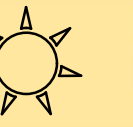
EXHIBIT
1" = 250'



LEGEND

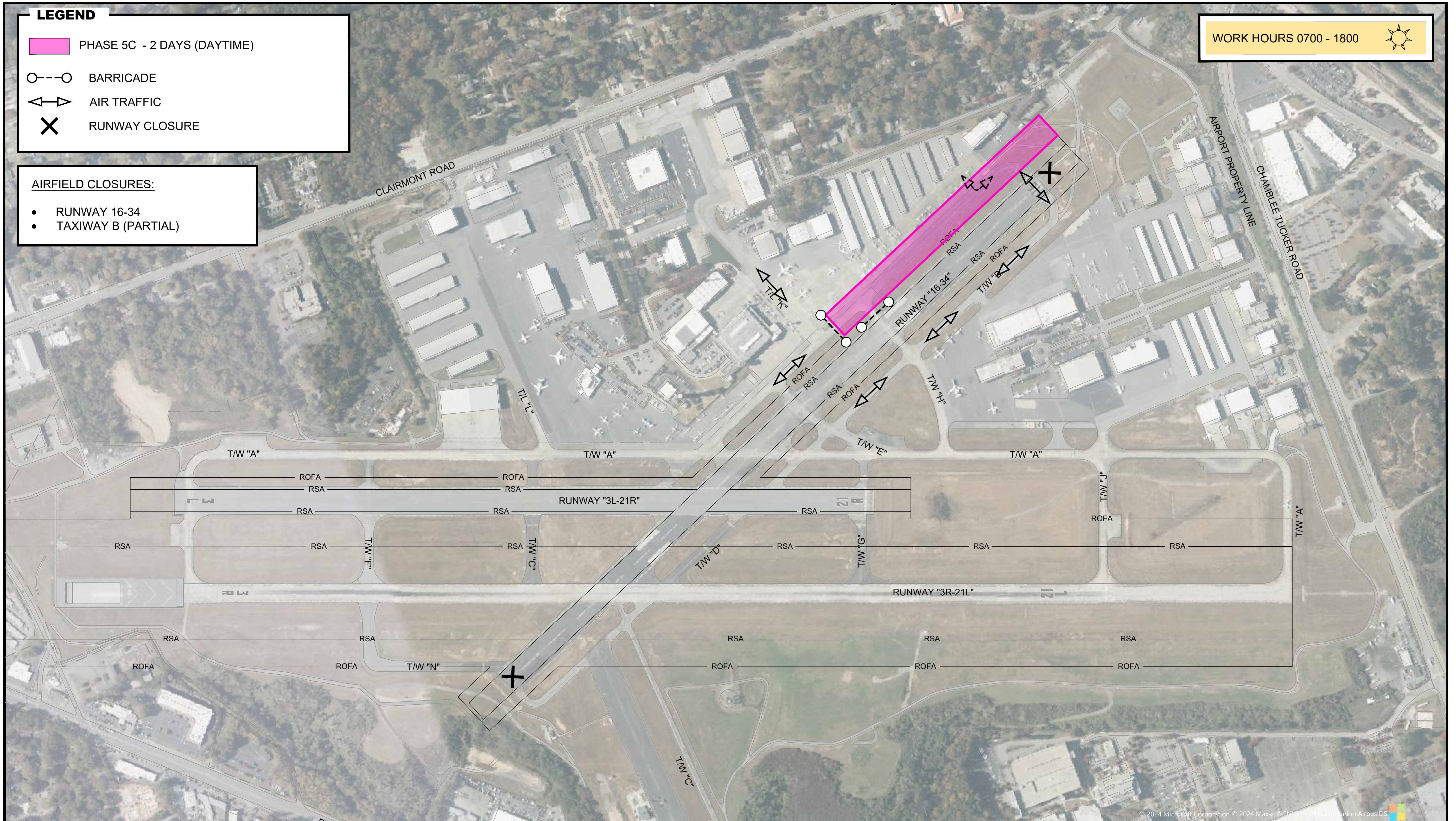
-  PHASE 5C - 2 DAYS (DAYTIME)
-  BARRICADE
-  AIR TRAFFIC
-  RUNWAY CLOSURE

WORK HOURS 0700 - 1800



AIRFIELD CLOSURES:

- RUNWAY 16-34
- TAXIWAY B (PARTIAL)



Y:\Airports\194883 - WA 23-03 Airfield Lighting - LED Design\Design\Dwg Exhibits\Tenant Phasing\POK - LED Phasing Breakdown.dwg Plotted on: Feb 04, 2025 - 1:37pm

Michael Baker
INTERNATIONAL



DEKALB PEACHTREE AIRPORT
DEKALB COUNTY, GEORGIA
PDK - AIRFIELD LIGHTING - LED - PHASE 5C

EXHIBIT
1" = 250'

