



Monthly Noise & Operations Report January 2025

Prepared by:
Korey Barnes
Environmental & Noise Analyst

PDK Good Neighbor Program



conducting run-ups January contribute noise pollution to the surrounding areas. While aircraft are in the air, noise pollution can occur underneath and to the sides of departure and arrival paths.

The primary goal of the **PDK Good Neighbor Program** is to serve as a community-based program with aims to reduce aircraft noise levels in the vicinity of the airport. Since its inception, the program has sought to increase awareness of airport operations and develop airport/community partnerships with the surrounding cities of Chamblee, Doraville, Dunwoody, Brookhaven, North Atlanta (including the Buckhead community), and others. The program is a multifaceted one that uses many approaches to convey information in a succinct manner.

The program strives to reduce overall aircraft noise disturbances by soliciting airport-user involvement. Community and airport participation, learning, and cooperation are the keys to the program’s success.

This report provides a monthly summary of airport operations, noise disturbances, and impacts to the surrounding neighborhoods to airport users and the surrounding communities.

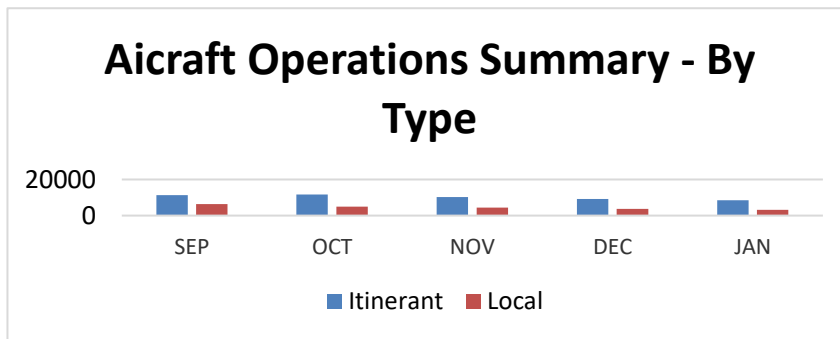
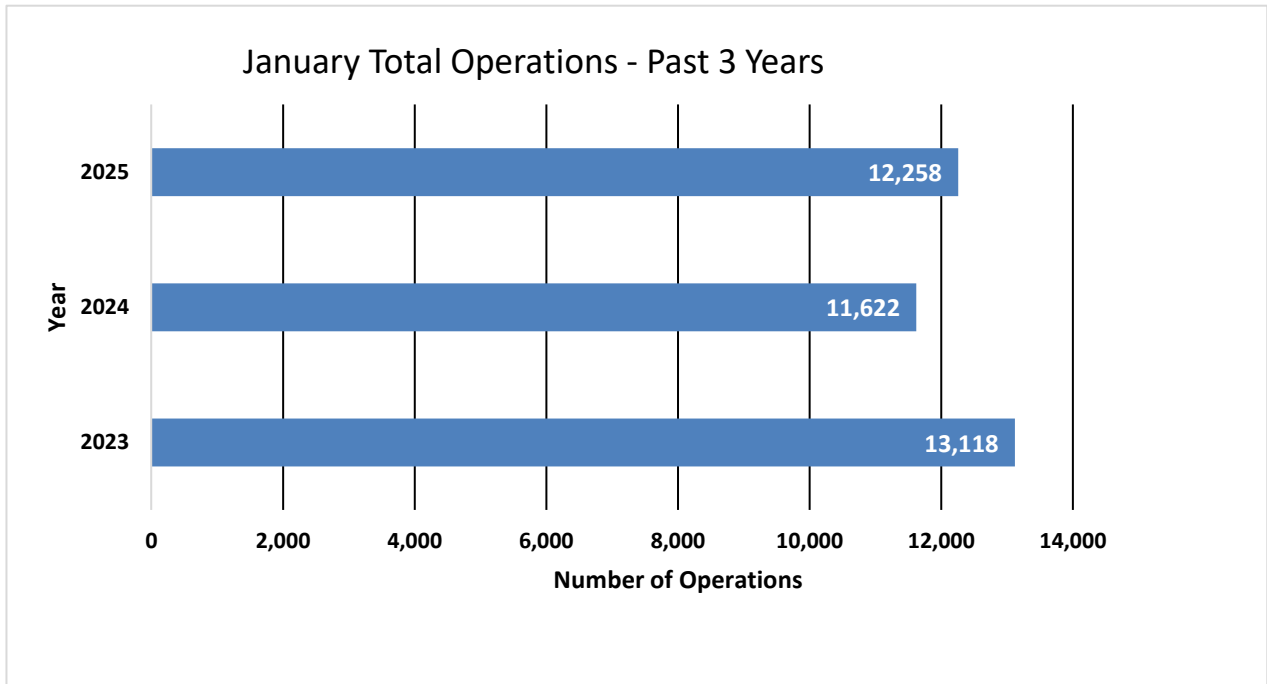
January 2025 Aircraft Operations:

| | This Month | This Month, Last Year (January 2025) | % Change from January 2025 | 5-Year Average for Month |
|----------------------|-------------------|---|-------------------------------|-----------------------------|
| Total Operations | 12,258 | 11,622 | 5.47% | 12,420 |
| Itinerant | 8,861 | 8,528 | 3.90% | 8,691 |
| Local | 3,397 | 3,094 | 9.79 | 3,729 |
| Voluntary Curfew Ops | 419 | 255 | 64.31% | 314 |
| Prior Authorization | 374 | (35) Noise disturbance calls associated with these flights. (14) Voluntary curfew ops were associated with these flights. (141) GLF4 Aircraft | | |

***Prior Authorization
(Section 6-93 Code)
Operation
Itinerant
Local
Voluntary Curfew Ops***

***Aircraft certified by the FAA with a max gross take-off weight greater than 75,000 pounds
One take-off or landing. Touch-and-go counts as two operations
Non-touch-and-go (regular operations)
Operations within 20 miles of Airport
Operations that occur between the hours of 11:00 p.m. and 6:00 a.m.***

January 2025 Aircraft Operations Summary

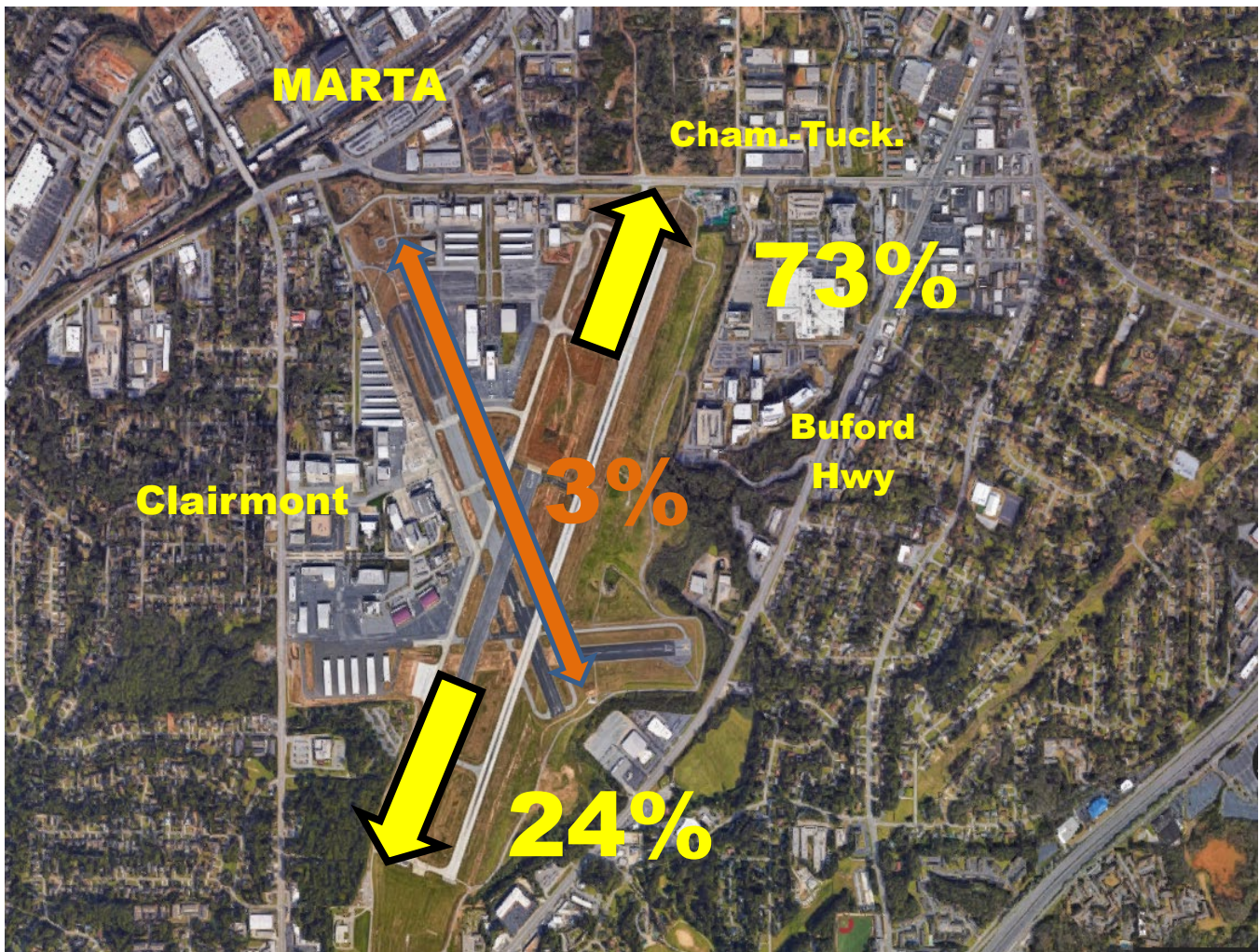


| 2024 Total Operations | 2024 Total Operations as of January 2024 | Total 2025 Ops as of January 2025 |
|-----------------------|--|-----------------------------------|
| 198,889 | 11,622 | 12,285 (5.47%) |

| 2025 Operations by Month | | | | |
|---------------------------------|--------------|--------------|---------------------------------|------------------|
| | Itinerant | Local | Total Tower-Recorded Operations | Voluntary Curfew |
| JAN | 8,861 | 3,397 | 12,258 | 418 |
| FEB | | | | |
| MAR | | | | |
| APR | | | | |
| MAY | | | | |
| JUN | | | | |
| JUL | | | | |
| AUG | | | | |
| SEP | | | | |
| OCT | | | | |
| NOV | | | | |
| DEC | | | | |

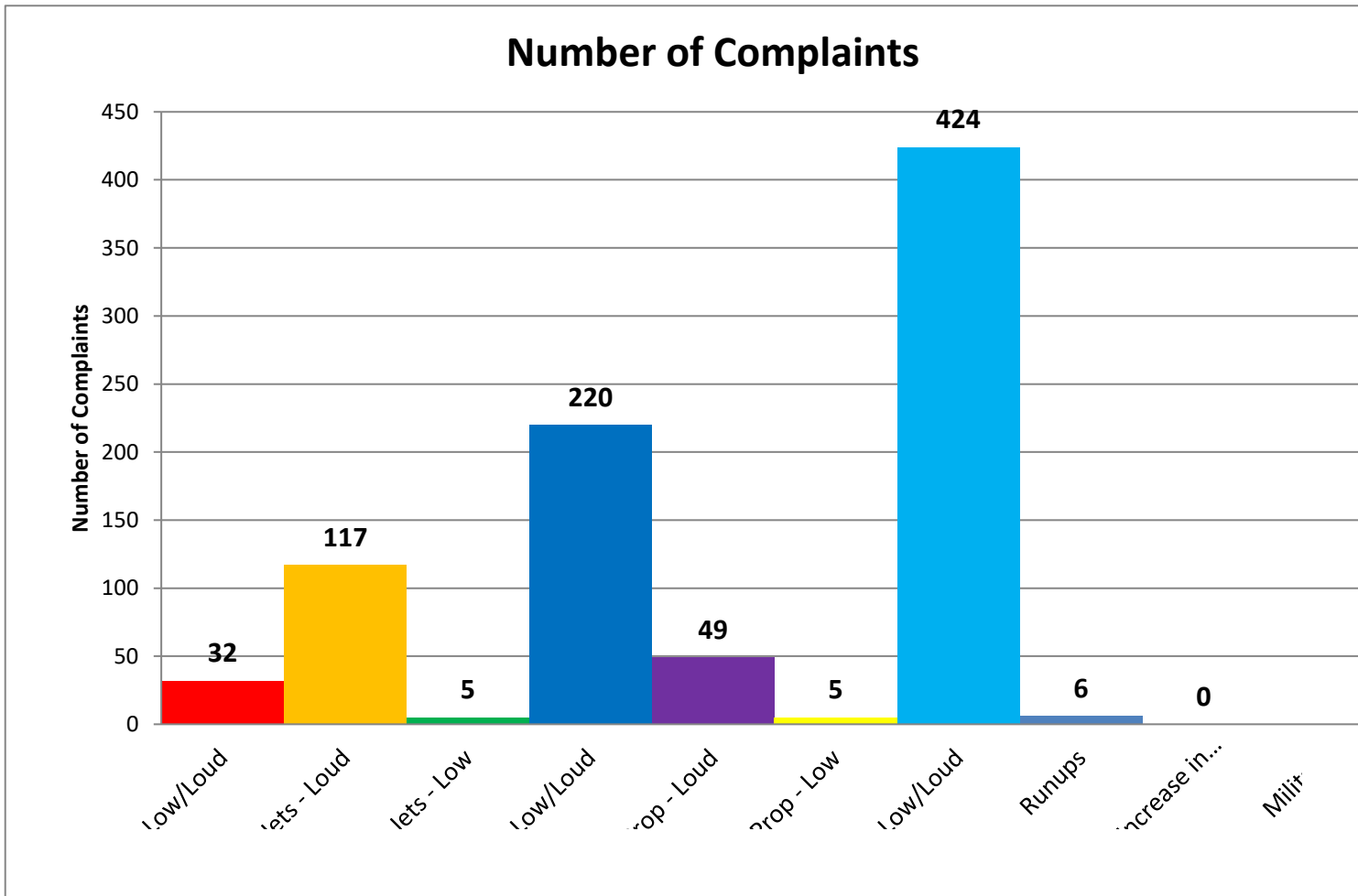
Runway Mode of Operations – January 2025

Directional use of runways has a major effect on flight patterns and the areas affected by flight operations. Weather and wind direction generally determines runway selection. When the tower is open, the FAA Air Traffic Control Tower determines the directional use of the runways. When possible, the tower will try to keep operations on a northbound flow (takeoffs and landings to the north) for noise abatement.

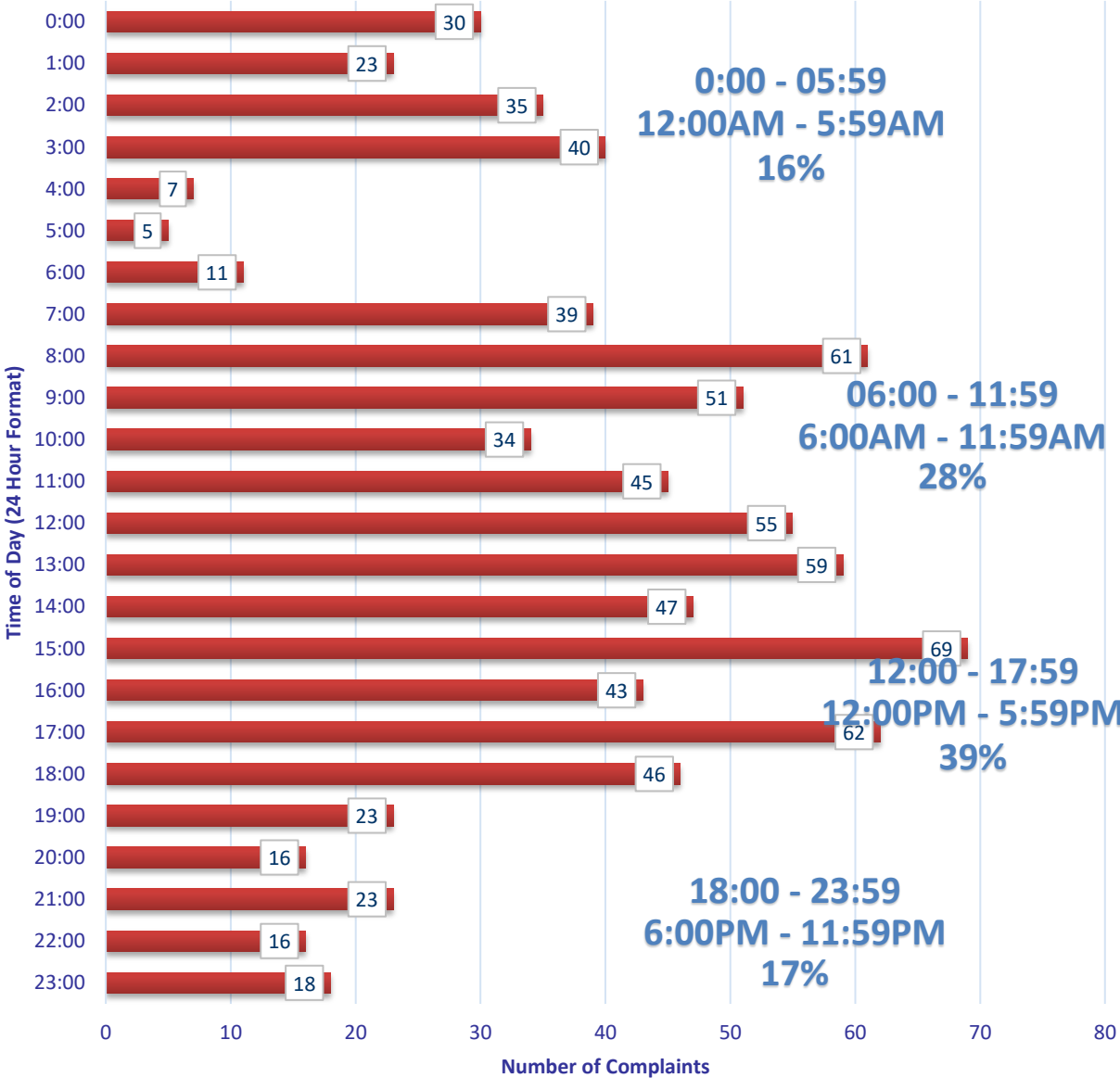


Noise Disturbance Summary

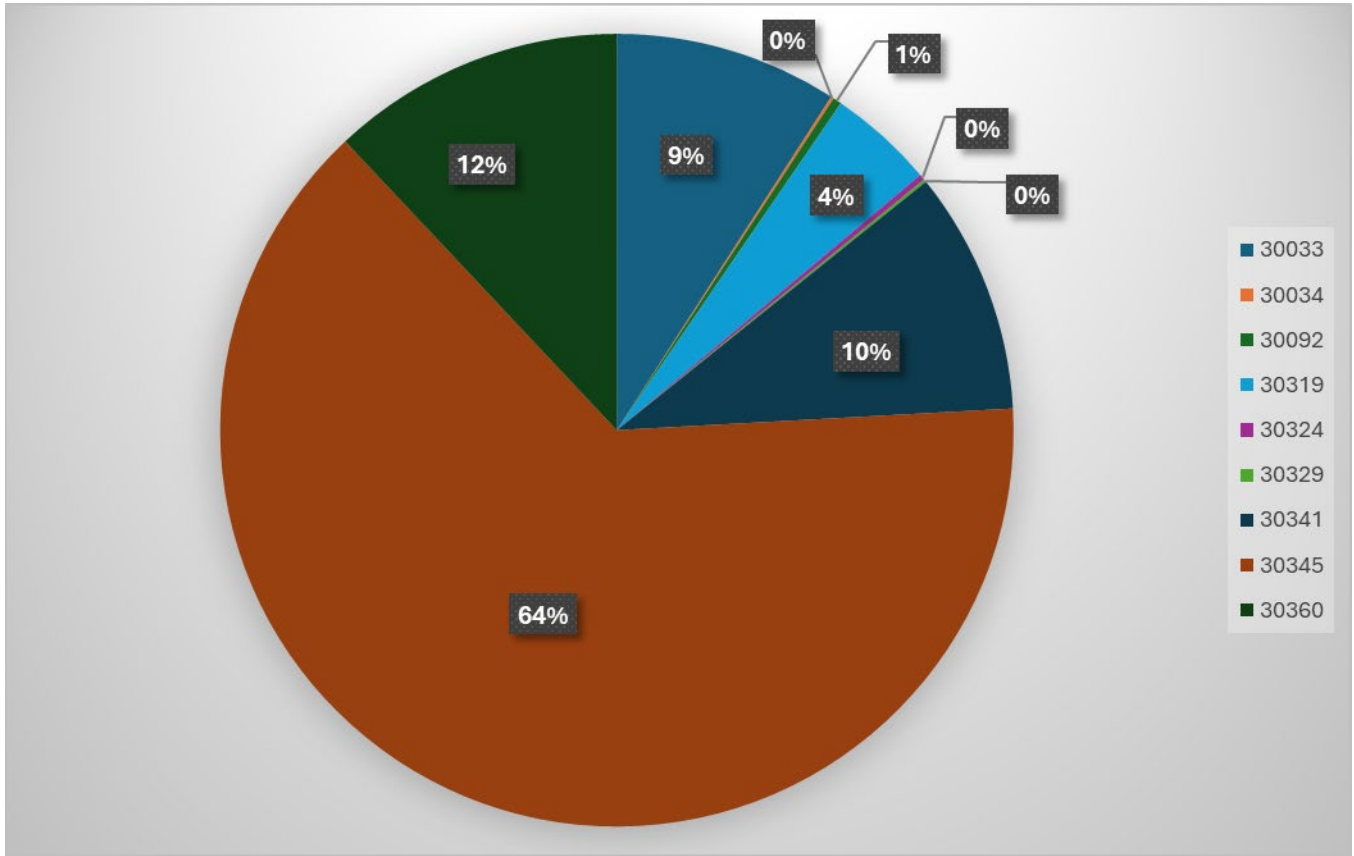
| Total complaints for January 2025 | Monthly Complaint Average 2025 | January 2025 Complaints per Household <i>(minus top two/Households)</i> | January 2025 Complaints per Household <i>All Inclusive</i> |
|-----------------------------------|--------------------------------|---|--|
| 858 | 858 | 9.3 | 33 |



Number of Complaints by Hour



Zip Code Complaints

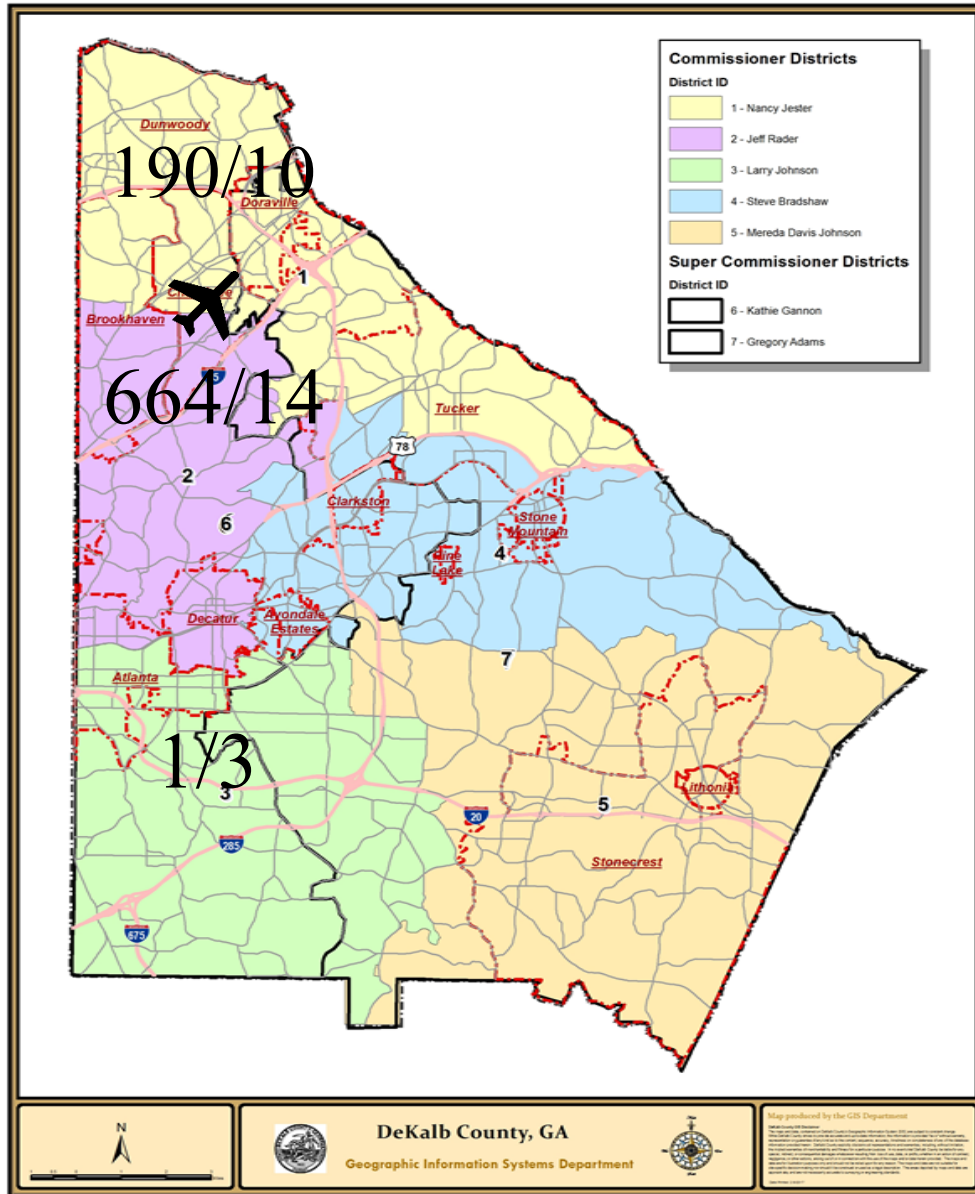


| Zip Code Guide | | |
|----------------|-------------------|-----------------|
| Zip Code | Community | % of Complaints |
| 30319 | Brookhaven | 4% |
| 30341 | Chamblee - North | 10% |
| 30345 | Chamblee - South | 64% |
| 30360 | Dunwoody | 12% |
| 30033 | Decatur | 9% |
| 30092 | Peachtree Corners | 1% |
| 30329 | Atlanta | <1% |
| 30324 | Atlanta | <1% |
| 30034 | Decatur | <1% |

Complaints by Caller

| Name | Address | City | Zip Code | Complaints |
|------------|----------------------------|-------------------|----------|------------|
| Cone | 2592 Drew Valley Rd NE | Brookhaven | 30319 | 1 |
| Paskevich | 1178 Druid Walk | Decatur | 30033 | 69 |
| Gokce | 1955 Fairway Cir NE | Brookhaven | 30319 | 1 |
| Johnson | 5200 Peachtree Rd | Atlanta | 30341 | 4 |
| Allen | 1501 Woodshire Dr | Decatur | 30033 | 1 |
| Schneeberg | 2707 Ashford Rd NE | Brookhaven | 30319 | 2 |
| Claar | 1771 Toni Way | Atlanta | 30341 | 1 |
| Anon-1 | LaVenture Forest | Atlanta | 30341 | 74 |
| Domis | 2671 Almshouse Ln NE | Atlanta | 30329 | 1 |
| Bowden | 2527 Dering Pl NE | Atlanta | 30345 | 1 |
| Spatafora | 5009 Lakeside Dr | Atlanta | 30360 | 2 |
| Welsch | 2019 Clairmont Ter NE | Atlanta | 30345 | 534 |
| Baker | 1788 Buckhead Valley Ln NE | Atlanta | 30324 | 2 |
| Lowndes | 2416 Dunwoody Hollow Dr | Dunwoody | 30360 | 101 |
| Perry | 2841 Leisure Springs Cir | Decatur | 30034 | 1 |
| Townsend | 2230 Tanglewood Rd | Decatur | 30033 | 8 |
| Robinson | 2586 Warwick Cir NE | Atlanta | 30345 | 2 |
| Dykewicz | 2486 Susaleen Ct NE | Atlanta | 30345 | 7 |
| Yates | 1895 9th St | Atlanta | 30341 | 2 |
| Bui | 5193 Peachtree Blvd | Atlanta | 30341 | 1 |
| Kempter | 2431 Skyland Way NE | Brookhaven | 30319 | 31 |
| Fox | 2423 Woodacres Rd NE | Atlanta | 30345 | 4 |
| Dengler | 1693 Wayland Cir NE | Brookhaven | 30319 | 2 |
| Davidian | 1806 Duke Rd | Atlanta | 30341 | 1 |
| Edwards | 4201 River Bottom Dr | Peachtree Corners | 30092 | 3 |
| McKay | 3222 Clairwood Ter | Atlanta | 30341 | 2 |

Complaints per Commission District



Total Number of Complaints

26/858




Total Number of Complainants

There were 1 complainant(s) outside of DeKalb County with 3 complaint(s) total.

There were 0 complainant(s) with an unknown address with 0 complaint(s) total

Correlation Chart of Noise Complaints to Operations

Chart Legend:

-  = Complaint + high noise event
-  = Complaint + high noise + PDK curfew operation
-  = Complaint + PDK curfew operation

The airport correlated **779 (99.2%)** out of **858** complaints:

- **740 or 86.2%** of the noise complaints were found to be **Direct** correlations
- **39 or 4.6%** were **Indirect** correlations to operations
- **79 or 9.2%** were **Not Correlated**.

- **Direct** = *Linked to a specific flight operation to/from PDK over a house/monitor (NOMS or manual correlation).*
- **Indirect** = *Not linked to a specific flight operation (take-off thrust, reverse thrust; maintenance run-ups) OR flight operation not originating or terminating at PDK.*
- **Not correlated** = *There was no noise event and/or aircraft track based on either NOMS correlation or manual research.*

Definitions:

NOMS: Noise and Operations Monitoring System

Op Type: Operation; Approach, Departure, or Overflight

Name: Name of Complainant

Offense Start: Date/Time of offense to complainant

Flight ID: Tail number of aircraft or military call sign

Flight Time: Actual Date/Time of correlated offense

NMS: Noise Monitoring Station

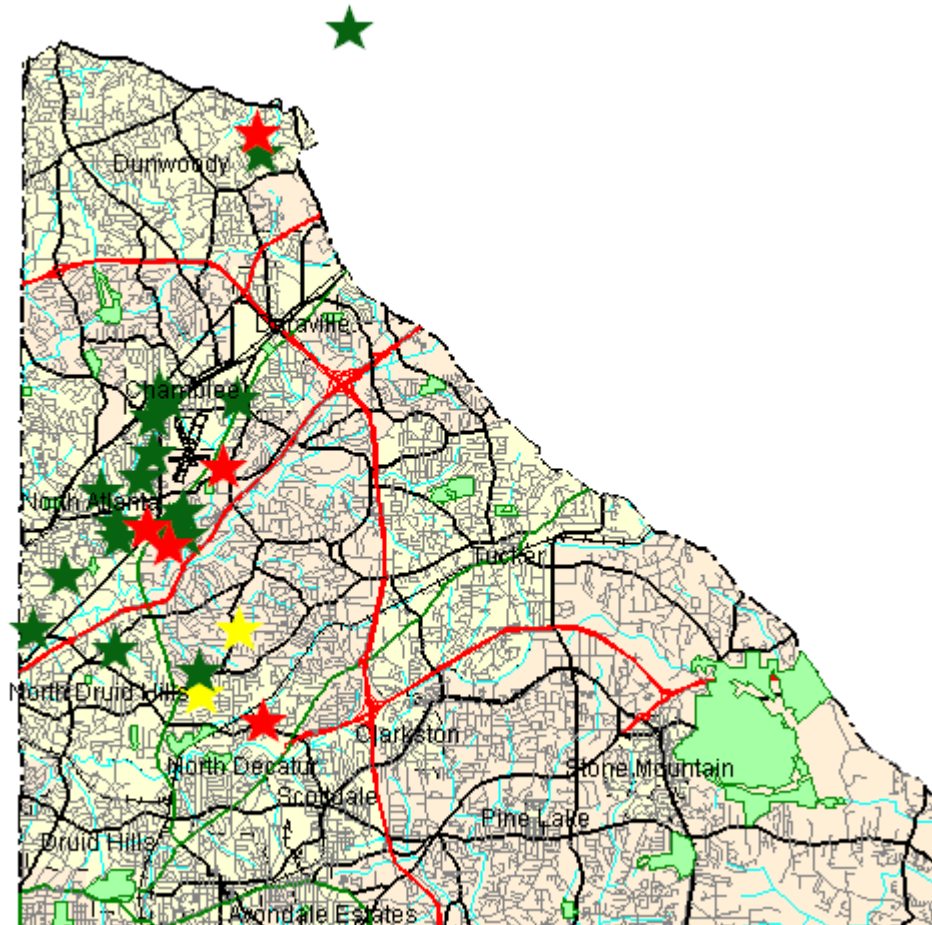
Rwy: Runway




LMAX: Maximum A-weighted sound level for a given event

Please contact: *Korey Barnes, Airport Noise and Environmental Analyst*, for more information regarding the PDK Good Neighbor Program at (770) 936-5440 or kbarnes@dekalbcountyga.gov.

PDK maintains a **hotline** that permits residents to report noise concerns by dialing: **(770) 936-5442** or e-mailing: pdnoise@dekalbcountyga.gov

Disturbance Location Pin Map – January 2025



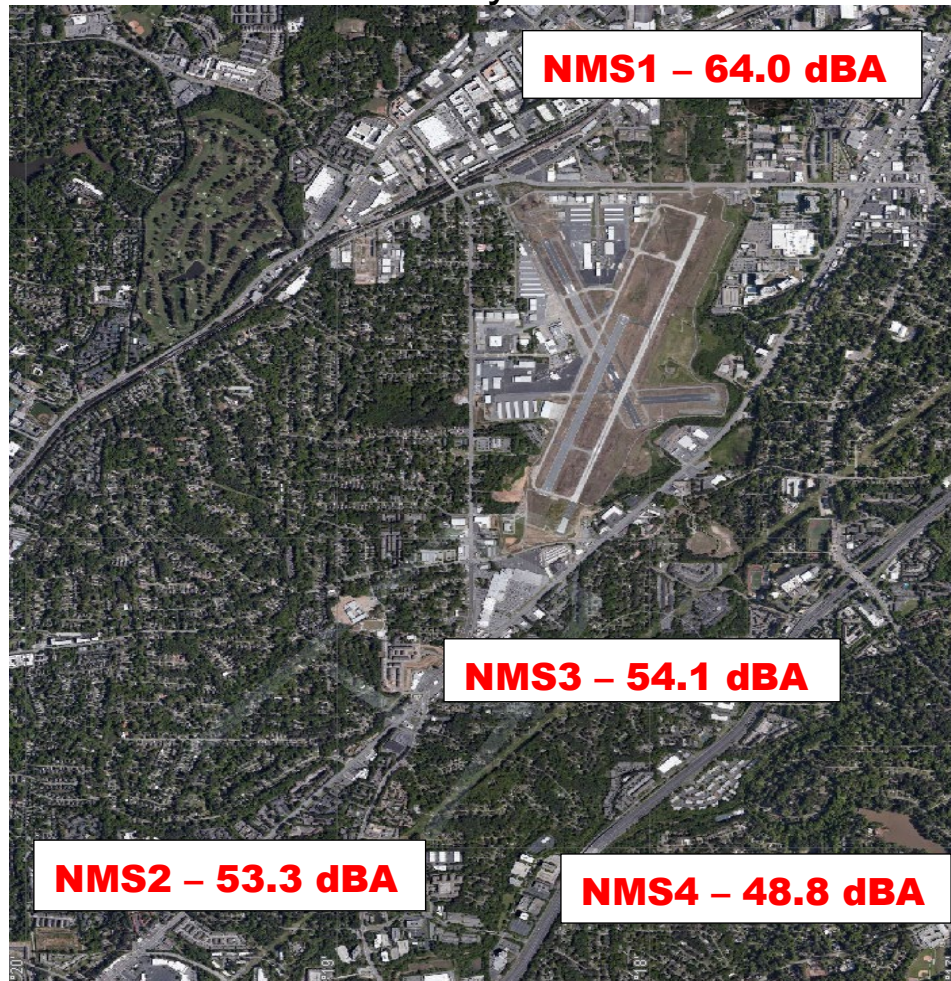
-  1-5 Complaints
-  6-10 Complaints
-  11+ Complaints

Complainants with Complaints Total

(0 Complainant(s) outside of DeKalb County; and 0 unknown)

Monthly Noise Levels at Monitors

January 2025



Noise Terminology

- *Decibels (dB) are the unit of measurement on the loudness scale. Decibels that a human can hear are called “A-weighted” or “dBA” on the sound frequency scale.*
- *The decibel scale is logarithmic, not linear. The smallest detectable change 1 dB; 3 dB for a human is readily detectable; 10 dB seems twice as loud.*
- *Lmax – The maximum A-weighted sound level for a given event – the highest level registered on the scale or meter; is not related to the duration for the event.*
- *DNL – A 24-hour time-averaged sound exposure level. It is the noise metric of choice in aircraft sound level measurement. It is also used to define noise contours of equal exposure. All Federal agencies have adopted DNL (LDNA) as the metric for airport noise analysis. (Day Night Level) (Day Night Level A-weighted)*
- *Leq – The steady A-weighted sound level over any specified period. It is used to identify the average sound level over a given period of time.*

Voluntary Curfew Operations & Operators Summary/Letter Status

Operations Summary:

The airport identified a total of **418 (100%)** of the 418 operations during the voluntary curfew period (11PM-6AM) during the month of **January 2025**. Of the **418** identified operations, **197 (47.1%)** were classified as **medical transport (e.g., Med-Evac) or other critical flights**. These aircraft are identified in **red bold font** below.

- Out of the *identified* operations, **125 one-time** operations were conducted during this period.
- Out of the *identified* operations, **293 multi-time** operations were conducted during this period, (i.e., sum of all aircraft operations in which an aircraft flew more than once during the voluntary curfew).

Operators Identified / Multi-Use:

193 operators were identified using the airport during the voluntary curfew period (does not include unknown aircraft).

68 operators were identified using the airport during the voluntary curfew period for 2 or more times during the month.

21 multi-use operators were identified as Med-Evac and/or emergency flights.

Complaints received from operations conducted during the voluntary curfew period:

858 complaints were received during **January 2025**.

158 (18.4%) complaints were received for operations conducted during the voluntary curfew period (**including** those complaints that were found to be non-correlated or indirect).

This Month – January 2025 N#'s (Multi-Use):

48 Aircraft with 2 Operations (N858WK, N6919J, PXG210, N301AZ., N741AM, N156RE, N895CR, N314GT, N623HD, N318DC, N704DA, N325AM, N780GS, N327TW, N240MW, N329GS, N240SH, N133LN, RAX123, N332CA, KFS68, N3337M, N703CA, N16BG, N719AV, N179SF, N75XL, SIS53, N80EA, LXJ469, N858ZK, WUP856, N88UA, GTX502, N971MC, N1EA, PRD71, CYT72, N28VU, N577XW, N296AE, N59FH, N416SF, WUP32, WUP918, WUP891, XLS501, N4840W, XSR361

1 Aircraft with 5 Operations (N553AE)

9 Aircraft with 3 Operations (OLV915, **N165AE**, N1065B,

3 Aircraft with 6 Operations (SKQ39)

N332AM, **N883AE**, **PXG691**, N306BD, EJA918, TWY2741)

2 Aircraft with 8 Operations (N208LS, N445CH)

1 Aircraft with 49 Operations (N414CY)

2 Aircraft with 4 Operations (JSL169, **N382AM**)

1 Aircraft with 72 Operations (SKQ31)

Last Month – December 2024 N#'s (Multi-Use):

40 Aircraft with 2 Operations (N925GW, **LBQ783**, N72BT, EJA559, **N893AU**, **N332AM**, **RAX1073**, **N336AE**, N773RC, N362BZ, **N179SF**, JLG426, N8GU, JTL318 N978TC, N474TT, GTW2, **N481AE**, N747WL, N500VC, N780GS, JTL409, **LBQ825**, N560LX, N889MS, N602EE, **N895CR**, JTL820, EJA749, N63NM, N92CJ, **N649AE**, FNX930, N650TJ, **RAX121**, N651WB, **LBQ781**, N395WJ)

1 Aircraft with 51 Operations (**N414CY**)

6 Aircraft with 3 Operations (**N877PA**, N911VU, JLG304,

1 Aircraft with 68 Operations (**SKQ31**)

N1909M, **N55AE**)

3 Aircraft with 4 Operations (N198LS, N314GT, **N329GS**)

1 Aircraft with 5 Operations (**N63AE**)

2 Aircraft with 6 Operations (N800NJ)

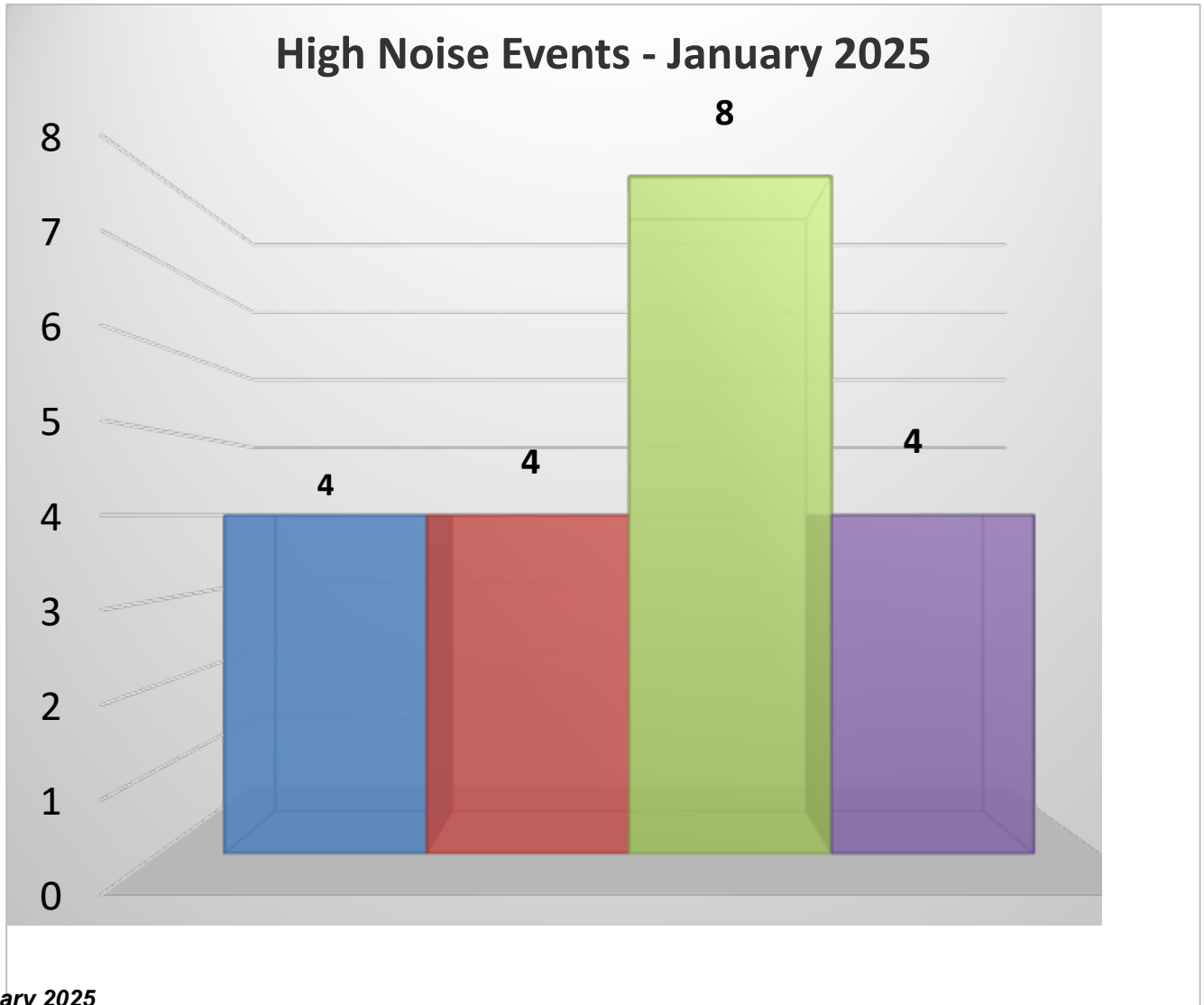
2 Aircraft with 8 Operations (**N445CH**, **PXG691**)

1 Aircraft with 9 Operations (**N883AE**)

A total of **221** advisory letters were sent to aircraft operators flying during the voluntary curfew period in the month of **January** who were not identified as Med-Evac and/or other emergency flights.

High Noise Event Threshold

The high noise event threshold was developed to work with pilots in methods and techniques that could reduce aircraft noise levels in and around PDK and its residential areas. Noise Monitoring Station (NMS) 1 is located in a commercial district and is set at **96 dBA Lmax** or greater. All other monitors, NMS2, 3, & 4 are located in residential areas and are set at **87 dBA Lmax** or greater. A Total of **20** advisory letters were sent out this month for aircraft identified as Exceeding PDK's high noise event threshold.



January 2025

1 Aircraft with 4 High Noise Event (N165AE)

December 2024

4 Aircraft with 2 High Noise Event (N385GP, N631JM, N70DT, N724EH)

Comments/Concerns?

Please visit www.pdkairport.org for airport information. You January also contact the airport about noise concerns at pdknoise@dekalbcountyga.gov or call the noise hotline at (770) 936-5442.