



# Monthly Noise & Operations Report February 2025

Prepared by:  
Korey Barnes  
Environmental & Noise Analyst

**PDK** Good Neighbor Program



conducting run-ups February contribute noise pollution to the surrounding areas. While aircraft are in the air, noise pollution can occur underneath and to the sides of departure and arrival paths.

The primary goal of the **PDK Good Neighbor Program** is to serve as a community-based program with aims to reduce aircraft noise levels in the vicinity of the airport. Since its inception, the program has sought to increase awareness of airport operations and develop airport/community partnerships with the surrounding cities of Chamblee, Doraville, Dunwoody, Brookhaven, North Atlanta (including the Buckhead community), and others. The program is a multifaceted one that uses many approaches to convey information in a succinct manner.

The program strives to reduce overall aircraft noise disturbances by soliciting airport-user involvement. Community and airport participation, learning, and cooperation are the keys to the program’s success.

This report provides a monthly summary of airport operations, noise disturbances, and impacts to the surrounding neighborhoods to airport users and the surrounding communities.

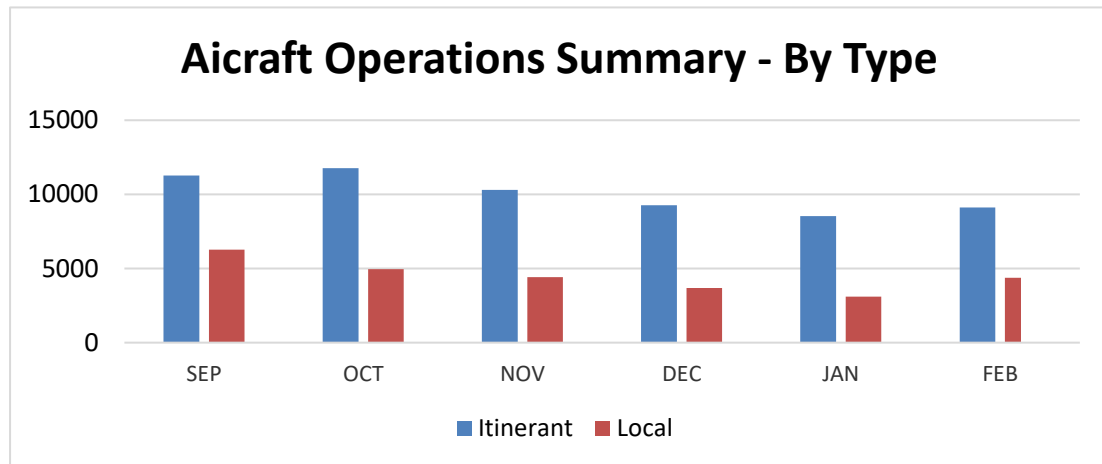
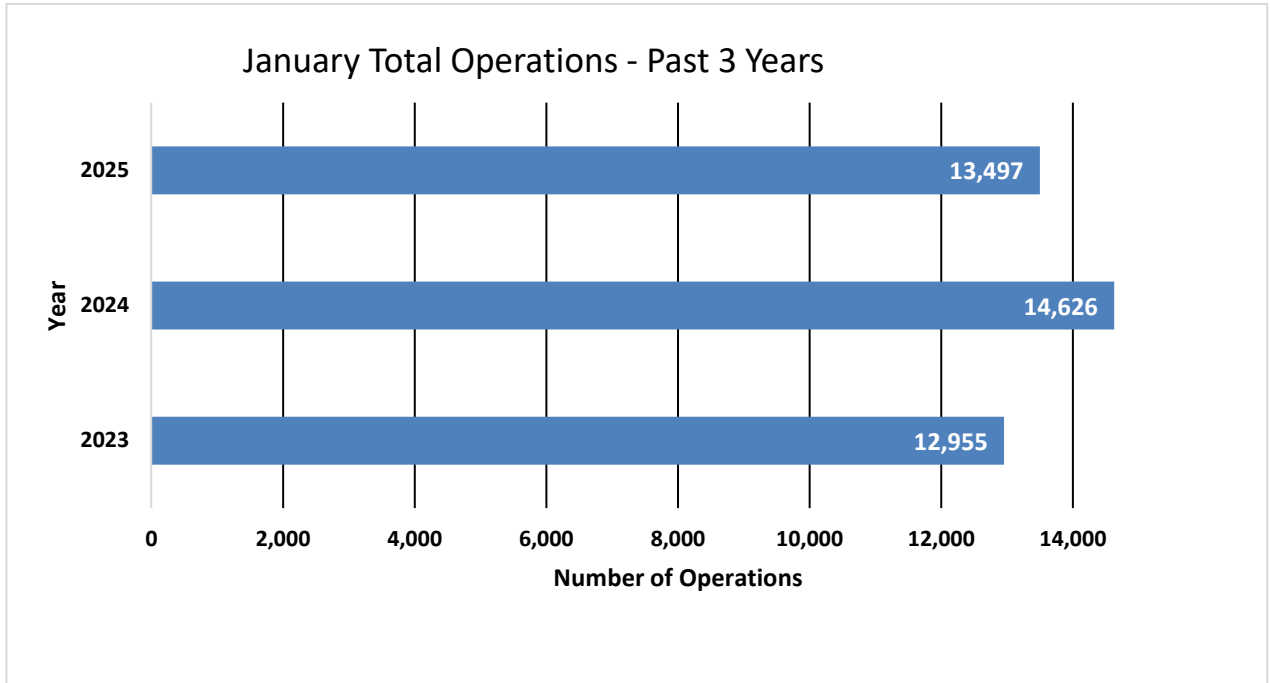
## February 2025 Aircraft Operations:

	<b>This Month</b>	This Month, Last Year (February 2024)	% Change from February 2024	5-Year Average for Month
Total Operations	<b>13,497</b>	<b>14,626</b>	<b>-7.72%</b>	<b>12,946</b>
Itinerant	<b>9,126</b>	<b>10,603</b>	<b>-13.93%</b>	<b>9,164</b>
Local	<b>4,371</b>	<b>4,023</b>	<b>8.65%</b>	<b>3,782</b>
Voluntary Curfew Ops	<b>383</b>	<b>362</b>	<b>5.80%</b>	<b>356</b>
Prior Authorization	<b>377</b>	<b>(78)</b> Noise disturbance calls associated with these flights. <b>(15)</b> Voluntary curfew ops were associated with these flights. <b>(118)</b> GLF4 Aircraft <b>(41)</b> GLEX Aircraft		

***Prior Authorization  
(Section 6-93 Code)  
Operation  
Itinerant  
Local  
Voluntary Curfew Ops***

***Aircraft certified by the FAA with a max gross take-off weight greater than 75,000 pounds  
One take-off or landing. Touch-and-go counts as two operations  
Non-touch-and-go (regular operations)  
Operations within 20 miles of Airport  
Operations that occur between the hours of 11:00 p.m. and 6:00 a.m.***

# February 2025 Aircraft Operations Summary



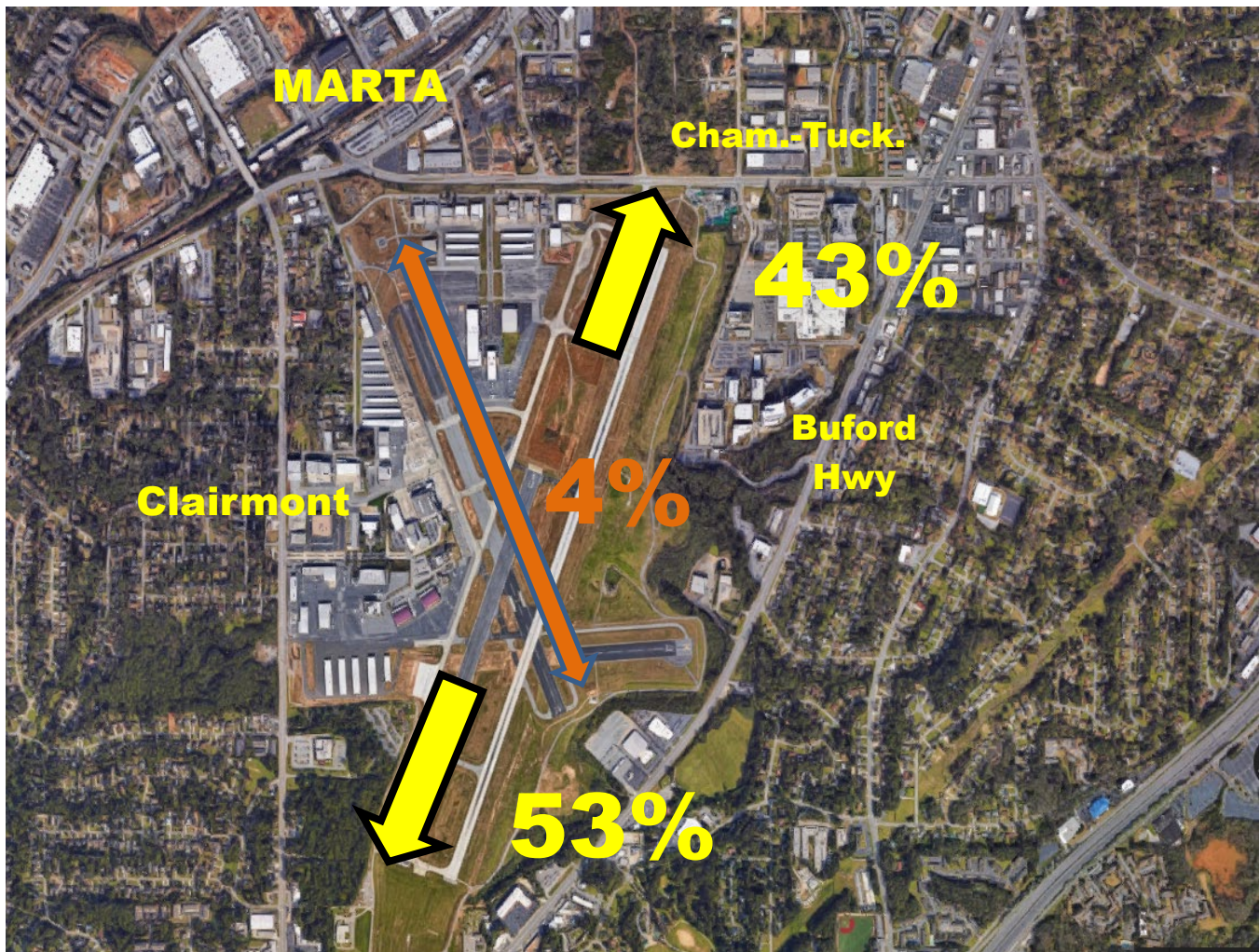
2024 Total Operations	2024 Total Operations as of February 2024	Total 2025 Ops as of February 2025
198,889	26,248	25,755 (-1.88%)

## 2025 Operations by Month

	Itinerant	Local	Total Tower-Recorded Operations	Voluntary Curfew
JAN	8,861	3,397	12,258	418
<b>FEB</b>	<b>9,126</b>	<b>4,371</b>	<b>13,497</b>	<b>383</b>
MAR				
APR				
MAY				
JUN				
JUL				
AUG				
SEP				
OCT				
NOV				
DEC				

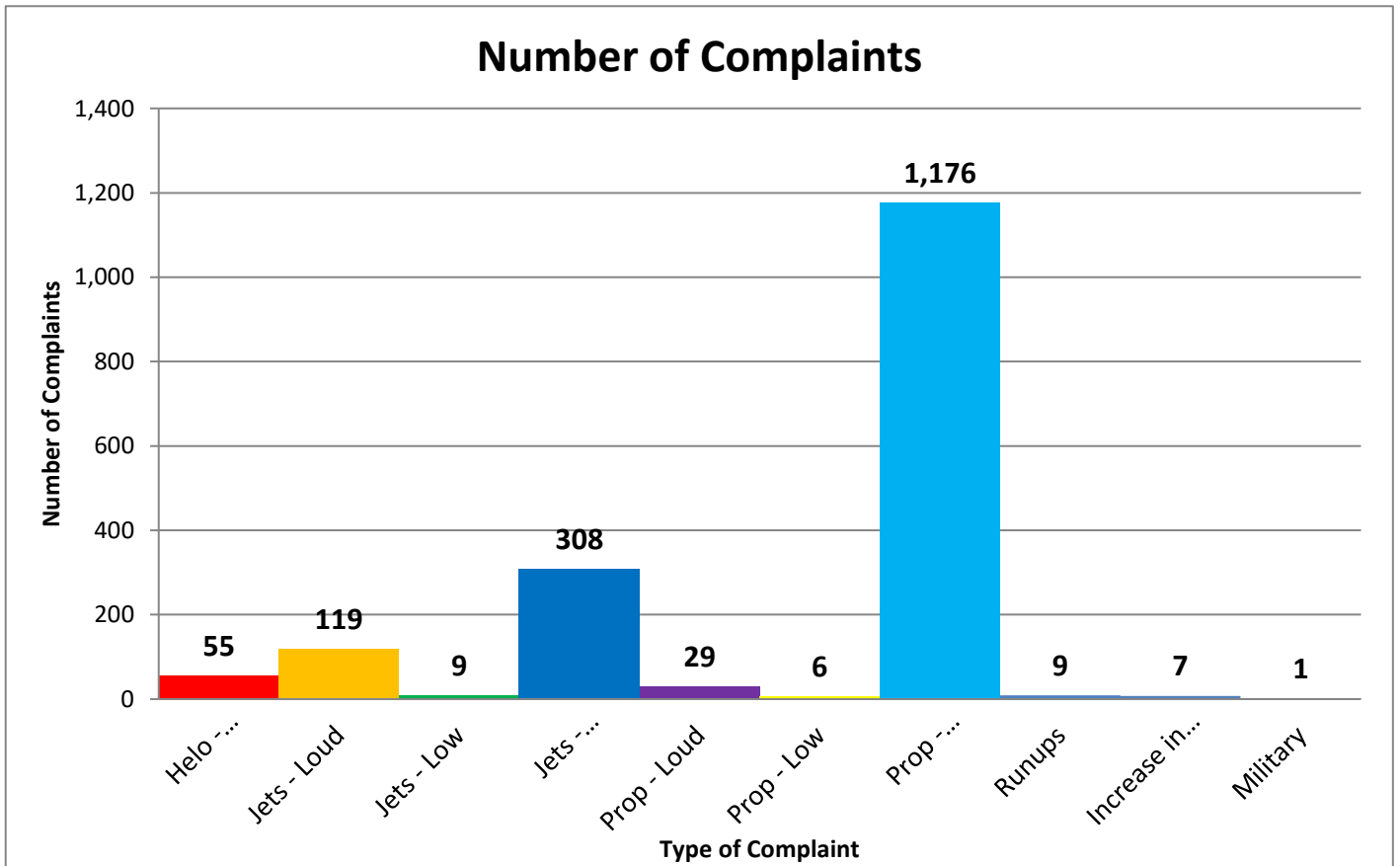
# Runway Mode of Operations – February 2025

Directional use of runways has a major effect on flight patterns and the areas affected by flight operations. Weather and wind direction generally determines runway selection. When the tower is open, the FAA Air Traffic Control Tower determines the directional use of the runways. When possible, the tower will try to keep operations on a northbound flow (takeoffs and landings to the north) for noise abatement.

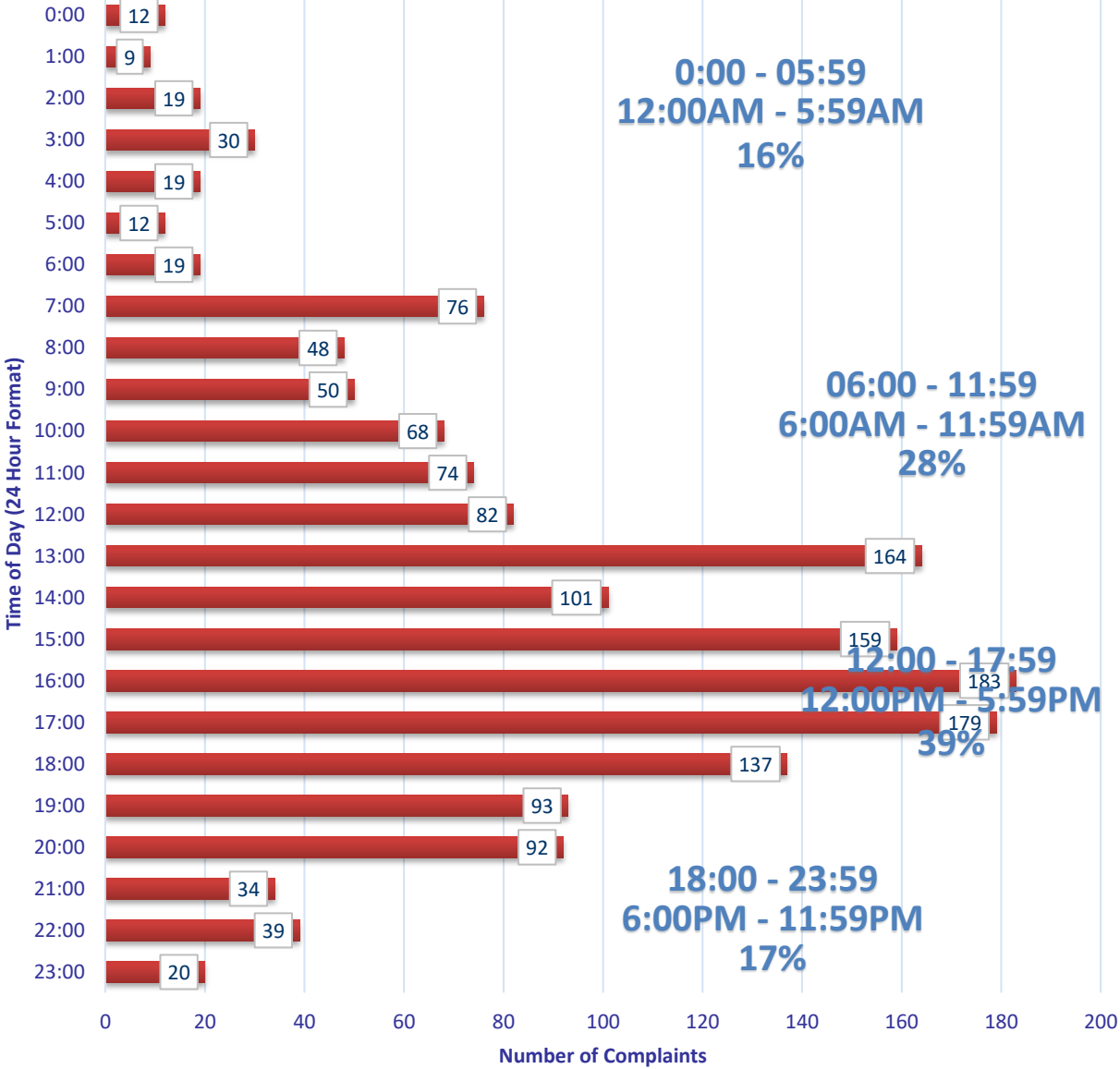


# Noise Disturbance Summary

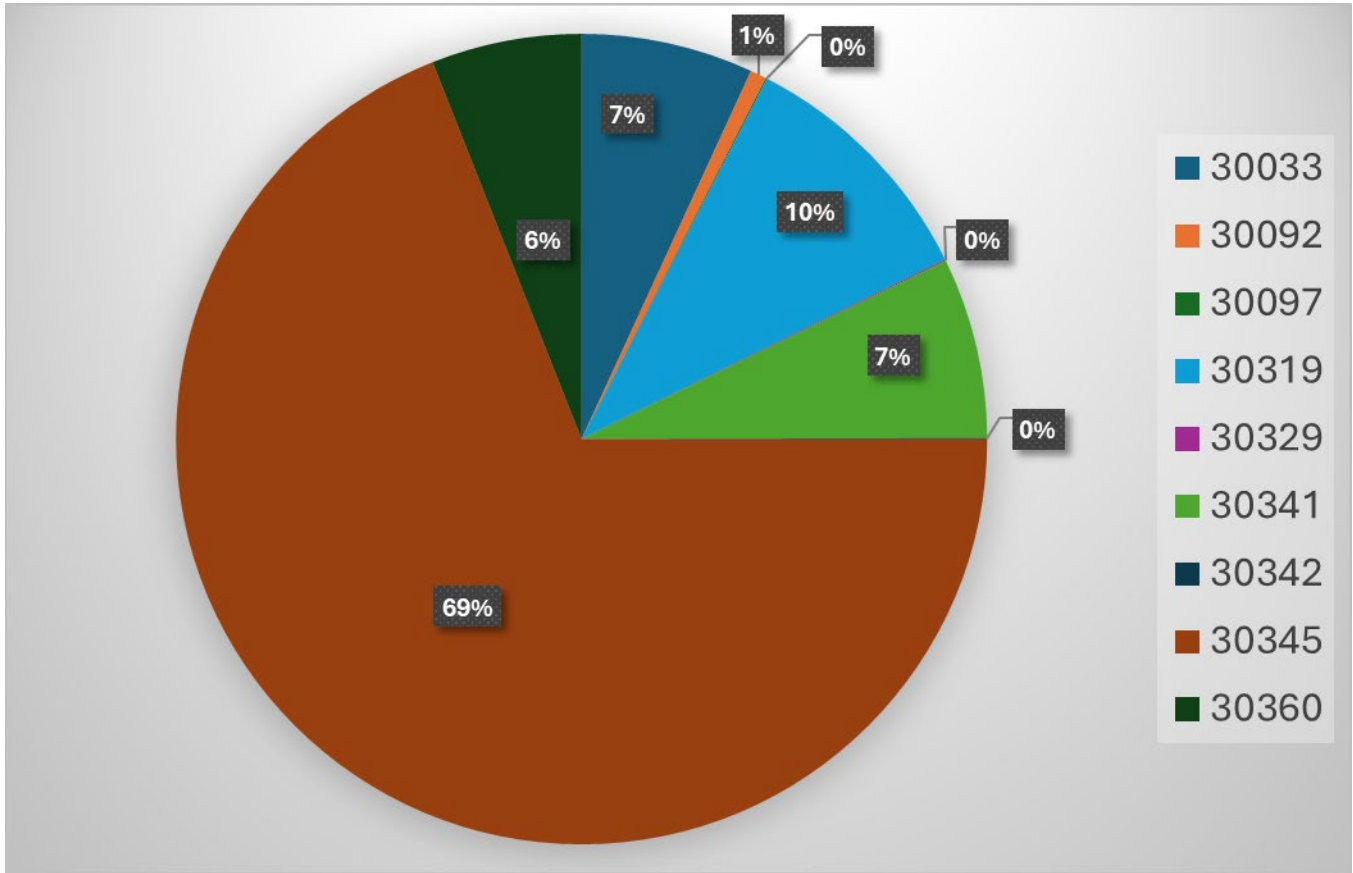
Total complaints for February 2025	Monthly Complaint Average 2025	February 2025 Complaints per Household <i>(minus top two/Households)</i>	February 2025 Complaints per Household <i>All Inclusive</i>
1,719	1,288	14.7	59.2



### Number of Complaints by Hour



# Zip Code Complaints



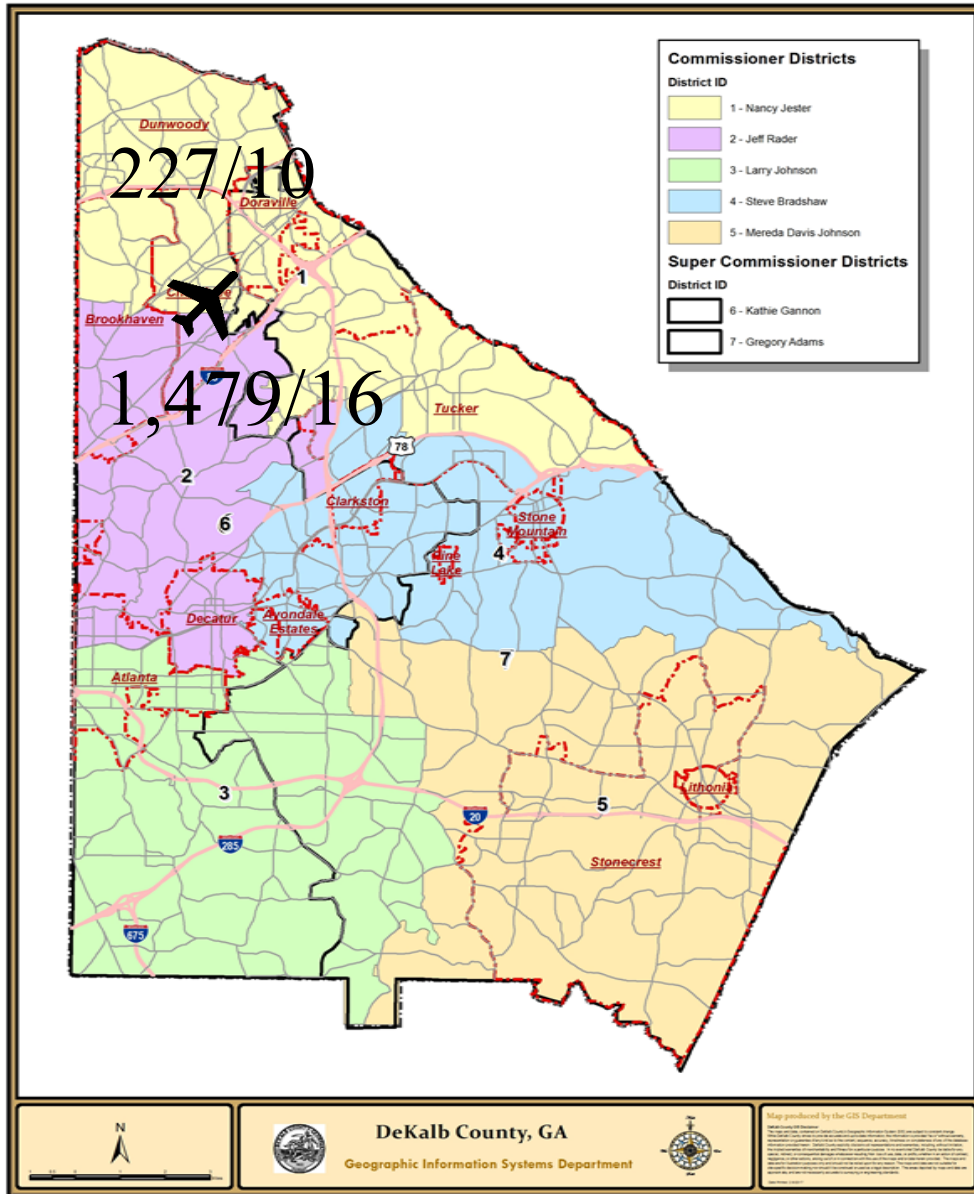
Zip Code Guide		
Zip Code	Community	% of Complaints
30319	Brookhaven	10%
30341	Chamblee - North	7%
30345	Chamblee – South	69%
30360	Dunwoody	6%
30033	North Druid Hills	7%
30092	Peachtree Corners	1%
30329	Atlanta	<1%
30097	Johns Creek	<1%
30342	Lawrenceville	<1%



# Complaints by Caller

Name	Address	City	Zip Code	Complaints
Paskevich	1178 Druid Walk	Decatur	30033	114
Sheppard	2855 Arrow Creek Dr	Atlanta	30341	1
Gerondelis	1390 Lavista Dr	Decatur	30033	2
Cone	2592 Drew Valley Rd NE	Brookhaven	30319	5
Schneeberg	2707 Ashford Rd NE	Brookhaven	30319	6
Johnson	5200 Peachtree Rd	Atlanta	30341	25
Hoffman	3901 N Stratford Rd NE	Atlanta	30342	1
Hummel	2854 Greenbrook Way NE	Atlanta	30345	9
Claar	1771 Toni Way	Atlanta	30341	1
Anon-1	La Venture Forrest	Atlanta	30341	93
Fibus	2743 Redding Rd NE	Brookhaven	30319	3
Domis	2671 Almshouse Ln NE	Atlanta	30329	1
Tabbara	3602 Ashcroft Bend NE	Brookhaven	30319	2
Welsch	2019 Clairmont Ter NE	Atlanta	30345	1165
Lowndes	2416 Dunwoody Hollow Dr	Dunwoody	30360	102
Dykewicz	2486 Susaleen Ct NE	Atlanta	30345	2
Barnett	2851 Cravey Dr NE	Atlanta	30345	2
Townsend	2230 Tanglewood Rd	Decatur	30033	2
Havard	5405 Hoylake Ct	Duluth	30097	1
Spatafora	5009 Lakeside Dr	Atlanta	30360	1
Needle	2586 Warwick Cir NE	Atlanta	30345	1
Kempter	2431 Skyland Way NE	Brookhaven	30319	156
Yates	1895 9th St	Atlanta	30341	1
Dengler	1693 Wayland Cir NE	Brookhaven	30319	2
Edwards	4201 River Bottom Dr	Peachtree Corners	30092	11
Fox	2423 Woodacres Rd NE	Atlanta	30345	7
McSwanson	3789 Donaldson Dr	Atlanta	30341	1
Gill	3091 Colonial Way Apt E3	Atlanta	30341	1
McKay	3222 Clairwood Ter	Atlanta	30341	1

# Complaints per Commission District



Total Number of Complaints

26/1,706




Total Number of Complainants

There were 3 complainant(s) outside of DeKalb County with 13 complaint(s) total.

There were 0 complainant(s) with an unknown address with 0 complaint(s) total

# Correlation Chart of Noise Complaints to Operations

## Chart Legend:

-  = Complaint + high noise event
-  = Complaint + high noise + PDK curfew operation
-  = Complaint + PDK curfew operation

The airport correlated **1,716 (99.8%)** out of **1,719** complaints:

- **1,640 or 86.2%** of the noise complaints were found to be **Direct** correlations
- **76 or 4.6%** were **Indirect** correlations to operations
- **3 or 9.2%** were **Not Correlated**.
- **Direct** = *Linked to a specific flight operation to/from PDK over a house/monitor (NOMS or manual correlation).*
- **Indirect** = **Not linked to a specific flight operation** (take-off thrust, reverse thrust; maintenance run-ups) **OR** flight operation **not originating or terminating at PDK**.
- **Not correlated** = *There was no noise event and/or aircraft track based on either NOMS correlation or manual research.*

## Definitions:

**NOMS:** Noise and Operations Monitoring System

**Op Type:** Operation; Approach, Departure, or Overflight

**Name:** Name of Complainant

**Offense Start:** Date/Time of offense to complainant

**Flight ID:** Tail number of aircraft or military call sign

**Flight Time:** Actual Date/Time of correlated offense

**NMS:** Noise Monitoring Station

**Rwy:** Runway

**LMAX:** Maximum A-weighted sound level for a given event

Please contact: *Korey Barnes, Airport Noise and Environmental Analyst*, for more information regarding the PDK Good Neighbor Program at (770) 936-5440 or [kbarnes@dekalbcountyga.gov](mailto:kbarnes@dekalbcountyga.gov).

PDK maintains a **hotline** that permits residents to report noise concerns by dialing: **(770) 936-5442** or e-mailing: [pdknoise@dekalbcountyga.gov](mailto:pdknoise@dekalbcountyga.gov)

Name	Offense Time	Flight Time	RWY	Ops	Aircraft Type	Aircraft ID	NMS	Lmax
Feldman	2/1/2025 3:42	2/1/2025 3:46	03R	A	PC12	SKQ31		
Welsch	2/1/2025 7:17	2/1/2025 7:15	21R	D	P28A	CXK320	NMS03	66
Welsch	2/1/2025 7:22	2/1/2025 7:15	21R	D	P28A	CXK320	NMS03	66
Welsch	2/1/2025 7:24	2/1/2025 7:15	21R	D	P28A	CXK320	NMS03	66
Welsch	2/1/2025 7:25	2/1/2025 7:25	21R	D	P28A	N11CA	NMS03	71.6
Welsch	2/1/2025 7:27	2/1/2025 7:25	21R	D	P28A	N11CA	NMS03	71.6
Welsch	2/1/2025 7:27	2/1/2025 7:25	21R	D	P28A	N11CA	NMS03	71.6
Welsch	2/1/2025 7:33	2/1/2025 7:25	21R	D	P28A	N11CA	NMS03	71.6
Welsch	2/1/2025 7:39	2/1/2025 7:32	21L	D	C172	N7339M	NMS03	71.2
Welsch	2/1/2025 7:44	2/1/2025 7:32	21L	D	C172	N7339M	NMS03	71.2
Welsch	2/1/2025 7:48	2/1/2025 7:32	21L	D	C172	N7339M	NMS03	71.2
Welsch	2/1/2025 7:50	2/1/2025 7:32	21L	D	C172	N7339M	NMS03	71.2
Welsch	2/1/2025 7:51	2/1/2025 7:32	21L	D	C172	N7339M	NMS03	71.2
Welsch	2/1/2025 7:53	2/1/2025 7:32	21L	D	C172	N7339M	NMS03	71.2
Welsch	2/1/2025 7:59	2/1/2025 7:32	21L	D	C172	N7339M	NMS03	71.2
Welsch	2/1/2025 8:05	2/1/2025 8:02	21L	D	E545	N313CF	NMS03	70.4
Welsch	2/1/2025 8:07	2/1/2025 8:02	21L	D	E545	N313CF	NMS03	70.4
Welsch	2/1/2025 8:10	2/1/2025 8:02	21L	D	E545	N313CF	NMS03	70.4
Welsch	2/1/2025 8:14	2/1/2025 8:13	21R	D	P28A	N6919J	NMS03	67.2
Welsch	2/1/2025 8:16	2/1/2025 8:13	21R	D	P28A	N6919J	NMS03	67.2
Welsch	2/1/2025 8:22	2/1/2025 8:16	21R	D	C72R	N106AF	NMS03	70
Welsch	2/1/2025 8:25	2/1/2025 8:16	21R	D	C72R	N106AF	NMS03	70
Welsch	2/1/2025 8:30	2/1/2025 8:29	21R	T	P28A	N11CA		
Welsch	2/1/2025 8:41	2/1/2025 8:26	21R	D	SR20	N6583C		
Welsch	2/1/2025 8:51	2/1/2025 8:39	21L	D	PA46	N9GF		
Welsch	2/1/2025 8:58	2/1/2025 8:41	21R	D	SR20	N753JT	NMS03	71.6
Welsch	2/1/2025 9:11	2/1/2025 9:03	21L	D	C310	N991GJ	NMS03	81.8
Welsch	2/1/2025 9:17	2/1/2025 9:00	21R	D	P28A	N84400		
Welsch	2/1/2025 9:22	2/1/2025 9:21	21L	D	P46T	N4185L		
Welsch	2/1/2025 9:23	2/1/2025 9:21	21L	D	P46T	N4185L		
Welsch	2/1/2025 9:25	2/1/2025 9:21	21L	D	P46T	N4185L		
Welsch	2/1/2025 9:27	2/1/2025 9:27	21R	D	P28A	N296CA		
Welsch	2/1/2025 9:28	2/1/2025 9:27	21R	D	P28A	N296CA		
Welsch	2/1/2025 9:29	2/1/2025 9:27	21R	D	P28A	N296CA		
Welsch	2/1/2025 9:37	2/1/2025 9:14	21R	D	C82T	N2247T		
Welsch	2/1/2025 9:42	2/1/2025 9:13	21L	D	P28A	N45RW		
Welsch	2/1/2025 9:45	2/1/2025 9:26	21R	T	P28A	N6919J		
Welsch	2/1/2025 9:48	2/1/2025 9:26	21R	T	P28A	N6919J		

Welsch	2/1/2025 9:52	2/1/2025 9:26	21R	T	P28A	N6919J		
Welsch	2/1/2025 9:54	2/1/2025 9:25	21L	D	E545	LXJ426		
Welsch	2/1/2025 9:59	2/1/2025 9:40	21R	D	S22T	N195WP		
Welsch	2/1/2025 10:01	2/1/2025 9:40	21R	D	S22T	N195WP		
Welsch	2/1/2025 10:04	2/1/2025 10:05	21L	T	F900	N824S		
Welsch	2/1/2025 10:06	2/1/2025 10:05	21L	T	F900	N824S		
Welsch	2/1/2025 10:07	2/1/2025 10:05	21L	T	F900	N824S		
Welsch	2/1/2025 10:09	2/1/2025 10:05	21L	T	F900	N824S		
Welsch	2/1/2025 10:14	2/1/2025 9:56	21L	T	SR20	N362BZ	NMS03	72
Welsch	2/1/2025 10:14	2/1/2025 9:56	21L	T	SR20	N362BZ	NMS03	72
Welsch	2/1/2025 10:16	2/1/2025 9:56	21L	T	SR20	N362BZ	NMS03	72
Welsch	2/1/2025 10:18	2/1/2025 10:02	21R	T	C172	N19646		
Welsch	2/1/2025 10:20	2/1/2025 10:02	21R	T	C172	N19646		
Welsch	2/1/2025 10:25	2/1/2025 10:02	21R	T	C172	N19646		
Welsch	2/1/2025 10:34	2/1/2025 10:44	03R	A	C421	N68685	NMS03	70
Welsch	2/1/2025 10:39	2/1/2025 10:44	03R	A	C421	N68685	NMS03	70
Lowndes	2/1/2025 11:06	2/1/2025 10:58	03L	T	P28A	N6919J		
Paskevich	2/1/2025 11:25	2/1/2025 11:31	03R	A	CRJ2	N715AV		
Welsch	2/1/2025 11:31	2/1/2025 11:31	03R	A	COL4	N33TP		
Welsch	2/1/2025 11:41	2/1/2025 11:44	03R	A	PA46	N9GF		
Welsch	2/1/2025 11:43	2/1/2025 11:47	03R	A	S22T	N921JP		
Welsch	2/1/2025 13:03	2/1/2025 13:08	03L	A	C82T	N2247T	NMS03	76.4
Welsch	2/1/2025 13:11	2/1/2025 13:15	03R	T	C402	N274MR		
Welsch	2/1/2025 13:19	2/1/2025 13:18	03R	A	C56X	WUP500		
Welsch	2/1/2025	2/1/2025	03R	A	PC12	N535PT	NMS03	69.9

	13:28	13:33						
Welsch	2/1/2025 13:57	2/1/2025 14:00	03L	T	C72R	N106AF		
Dengler	2/1/2025 14:28	2/1/2025 14:31	UNK	A	EC30	N332AM	NMS02	76.7
Welsch	2/1/2025 14:32	2/1/2025 14:36	03R	A	BE30	N316D	NMS03	66.8
Lowndes	2/1/2025 15:21	2/1/2025 15:19	03R	D	BE20	N585CE		
Lowndes	2/1/2025 15:29	2/1/2025 15:17	03L	D	GLST	N678DS		
Lowndes	2/1/2025 15:38	2/1/2025 15:11	03L	D	C82R	N1657R		
Lowndes	2/1/2025 15:38	2/1/2025 15:11	03L	D	C82R	N1657R		
Schneeberg	2/1/2025 16:46	2/1/2025 16:44	UNK	T	B407	N921SF		
Paskevich	2/1/2025 16:54	2/1/2025 16:58	03R	A	E35L	N157MG		
Paskevich	2/1/2025 17:00	2/1/2025 17:26	03R	A	F900	N824S		
Welsch	2/1/2025 17:20	2/1/2025 17:24	03R	A	PC12	CNS610	NMS03	70.1
Lowndes	2/1/2025 17:27	2/1/2025 17:26	03R	D	F900	N824S		
Welsch	2/1/2025 17:34	2/1/2025 17:40	03R	A	BE36	N94EM	NMS03	76.5
Welsch	2/1/2025 17:45	2/1/2025 18:04	03R	A	E545	LXJ443	NMS03	71.5
Welsch	2/1/2025 17:45	2/1/2025 18:04	03R	A	E545	LXJ443	NMS03	71.5
Welsch	2/1/2025 17:46	2/1/2025 17:53	03L	T	C172	N314GT		
Fox	2/1/2025 17:47	2/1/2025 17:53	03L	T	C172	N314GT		
Welsch	2/1/2025 17:47	2/1/2025 17:53	03L	T	C172	N314GT		
Paskevich	2/1/2025 18:01	2/1/2025 18:07	03R	A	BE30	WUP858		
Welsch	2/1/2025 18:51	2/1/2025 19:05	03R	A	SR20	N490CD		
Welsch	2/1/2025 20:05	2/1/2025 20:09	03R	A	PC12	CNS104	NMS03	71.3
Lowndes	2/1/2025 23:18	2/1/2025 23:13	03R	D	C25A	N85KM		
Lowndes	2/2/2025 8:08	2/2/2025 8:21	21L	A	BE20	N28VU		

Welsch	2/2/2025 8:12	2/2/2025 8:00	21L	D	B350	WUP834	NMS03	71.3
Lowndes	2/2/2025 8:17	2/2/2025 8:21	21L	A	BE20	N28VU		
Lowndes	2/2/2025 8:31	2/2/2025 8:21	21L	A	BE20	N28VU		
Welsch	2/2/2025 8:39	2/2/2025 8:33	21L	D	BE20	N28VU	NMS03	75.8
Welsch	2/2/2025 9:26	2/2/2025 9:18	21R	D	P28A	CXK271		
Welsch	2/2/2025 9:36	2/2/2025 9:21	21R	D	P28A	N84400	NMS03	70.4
Welsch	2/2/2025 11:06	2/2/2025 10:49	21R	D	C172	N73924		
Welsch	2/2/2025 11:08	2/2/2025 10:49	21R	D	C172	N73924		
Welsch	2/2/2025 11:09	2/2/2025 11:08	21R	D	P28A	N6919J		
Welsch	2/2/2025 11:12	2/2/2025 11:13	21R	T	C172	N62855		
Welsch	2/2/2025 11:14	2/2/2025 11:13	21R	T	C172	N62855		
Welsch	2/2/2025 11:17	2/2/2025 11:05	21L	D	CRJ2	N715AV	NMS03	69.7
Welsch	2/2/2025 11:20	2/2/2025 11:05	21L	D	CRJ2	N715AV	NMS03	69.7
Welsch	2/2/2025 11:22	2/2/2025 11:05	21L	D	CRJ2	N715AV	NMS03	69.7
Welsch	2/2/2025 11:24	2/2/2025 11:18	21L	D	GLF5	N56C	NMS03	78.4
Lowndes	2/2/2025 11:26	2/2/2025 11:08	21R	D	P28A	N6919J		
Welsch	2/2/2025 11:26	2/2/2025 11:18	21L	D	GLF5	N56C	NMS03	78.4
Welsch	2/2/2025 11:28	2/2/2025 11:18	21L	D	GLF5	N56C	NMS03	78.4
Welsch	2/2/2025 11:29	2/2/2025 11:18	21L	D	GLF5	N56C	NMS03	78.4
Lowndes	2/2/2025 11:32	2/2/2025 11:08	21R	D	P28A	N6919J		
Welsch	2/2/2025 11:32	2/2/2025 11:18	21L	D	GLF5	N56C	NMS03	78.4
Lowndes	2/2/2025 11:34	2/2/2025 11:08	21R	D	P28A	N6919J		
Lowndes	2/2/2025 11:43	2/2/2025 11:13	21R	T	C172	N62855		
Lowndes	2/2/2025 11:44	2/2/2025 11:51	21L	A	C82R	N1657R		
Lowndes	2/2/2025 11:46	2/2/2025 11:51	21L	A	C82R	N1657R		
Johnson	2/2/2025 11:54	2/2/2025 11:45	21L	D	C56X	EJA658		

Paskevich	2/2/2025 11:54	2/2/2025 11:51	21R	T	C182	N2600G		
Johnson	2/2/2025 11:54	2/2/2025 11:45	21L	D	C56X	EJA658		
Paskevich	2/2/2025 12:02	2/2/2025 11:56	UNK	O	C172	N734UE		
Paskevich	2/2/2025 12:04	2/2/2025 11:56	UNK	O	C172	N734UE		
Lowndes	2/2/2025 12:08	2/2/2025 12:08	21L	A	P28A	N11CA		
Paskevich	2/2/2025 12:09	2/2/2025 11:56	UNK	O	C172	N734UE		
Paskevich	2/2/2025 12:09	2/2/2025 11:56	UNK	O	C172	N734UE		
Paskevich	2/2/2025 12:10	2/2/2025 11:56	UNK	O	C172	N734UE		
Paskevich	2/2/2025 12:13	2/2/2025 11:56	UNK	O	C172	N734UE		
Lowndes	2/2/2025 12:26	2/2/2025 12:19	8R	D	B739	N831DN		
Lowndes	2/2/2025 12:26	2/2/2025 12:19	8R	D	B739	N831DN		
Paskevich	2/2/2025 12:39	2/2/2025 12:35	8R	D	B763	N185DN		
Paskevich	2/2/2025 12:55	2/2/2025 12:54	UNK	O	C310	N310JB		
Paskevich	2/2/2025 13:03	2/2/2025 13:06	UNK	O	C25B	N897TC		
Lowndes	2/2/2025 13:39	2/2/2025 13:22	UNK	O	P28A	CXK673		
Welsch	2/2/2025 13:56	2/2/2025 13:49	21R	T	BE36	N217TW		
Paskevich	2/2/2025 14:37	2/2/2025 14:26	UNK	O	BE58	N721CV		
Welsch	2/2/2025 14:37	2/2/2025 14:33	21L	T	P28A	N6919J	NMS03	72.8
Paskevich	2/2/2025 14:57	2/2/2025 14:58	21L	D	GLEX	N801AD		
Paskevich	2/2/2025 14:58	2/2/2025 14:58	21L	D	GLEX	N801AD		
Paskevich	2/2/2025 15:05	2/2/2025 14:58	21L	D	GLEX	N801AD		
Paskevich	2/2/2025 15:14	2/2/2025 14:58	21L	D	GLEX	N801AD		
Welsch	2/2/2025 15:27	2/2/2025 15:08	21R	T	PA24	N7146P		
Paskevich	2/2/2025	2/2/2025	UNK	O	GL7T	N62LV		



	15:31	15:23						
Paskevich	2/2/2025 15:35	2/2/2025 15:23	UNK	O	GL7T	N62LV		
Paskevich	2/2/2025 15:38	2/2/2025 15:23	UNK	O	GL7T	N62LV		
Lowndes	2/2/2025 16:41	2/2/2025 16:44	21R	A	PA32	N3912W		
Welsch	2/2/2025 17:40	2/2/2025 17:39	21R	D	P28A	CXK271		
Welsch	2/2/2025 17:46	2/2/2025 17:42	21R	T	P28A	N6743F		
Welsch	2/2/2025 17:48	2/2/2025 17:42	21R	T	P28A	N6743F		
Welsch	2/2/2025 18:02	2/2/2025 17:46	21R	D	SR22	N146GS	NMS03	70.9
Welsch	2/2/2025 18:07	2/2/2025 17:56	21L	D	CL35	EJA771	NMS03	73.8
Welsch	2/2/2025 18:24	2/2/2025 18:21	21R	T	P28A	N6743F		
Welsch	2/2/2025 18:41	2/2/2025 18:41	21L	D	GALX	N671BP	NMS03	78.4
Welsch	2/2/2025 18:49	2/2/2025 18:48	21R	T	P28A	N11CA		
Welsch	2/2/2025 20:01	2/2/2025 19:59	21L	D	H25B	N800NJ	NMS03	73.9
Welsch	2/2/2025 21:04	2/2/2025 21:03	21R	T	PA32	N3912W	NMS03	71.1
Welsch	2/2/2025 21:38	2/2/2025 21:27	21L	D	GALX	N445ST	NMS03	77
Welsch	2/3/2025 0:51	2/3/2025 1:07	UNK	A	EC45	N445CH		
Welsch	2/3/2025 2:45	2/3/2025 2:40	21L	D	C208	N414CY	NMS03	75.6
Feldman	2/3/2025 2:57	2/3/2025 2:40	21L	D	C208	N414CY		
Edwards	2/3/2025 6:38	2/3/2025 6:34	03R	D	SR22	N553LB		
Feldman	2/3/2025 7:00	2/3/2025 6:54	21L	D	FA7X	N2025		
Welsch	2/3/2025 7:01	2/3/2025 6:54	21L	D	FA7X	N2025	NMS03	67
Kempter	2/3/2025 7:01	2/3/2025 6:54	21L	D	FA7X	N2025	NMS03	67
Fibus	2/3/2025 9:10	2/3/2025 9:09	21R	T	AC50	CTL13		
Feldman	2/3/2025 10:09	2/3/2025 10:12	21L	A	E55P	JIZ317		
Welsch	2/3/2025 10:16	2/3/2025 10:06	21R	D	SR22	N24AT		
Welsch	2/3/2025 10:20	2/3/2025 10:05	21R	D	S22T	N27MX	NMS03	84.4
Welsch	2/3/2025 10:21	2/3/2025 10:05	21R	D	S22T	N27MX	NMS03	84.4
Welsch	2/3/2025	2/3/2025	21R	D	C172	N73924	NMS03	69.4

	10:24	10:05						
Welsch	2/3/2025 10:26	2/3/2025 10:05	21R	D	C172	N73924	NMS03	69.4
Welsch	2/3/2025 10:31	2/3/2025 10:30	21R	T	P28A	N296CA		
Welsch	2/3/2025 10:34	2/3/2025 10:26	21L	D	BE40	RVJ412	NMS03	83.5
Welsch	2/3/2025 10:34	2/3/2025 10:26	21L	D	BE40	RVJ412	NMS03	83.5
Feldman	2/3/2025 10:34	2/3/2025 10:26	21L	D	BE40	RVJ412		
Welsch	2/3/2025 10:50	2/3/2025 10:42	21L	D	G150	N922LR		
Welsch	2/3/2025 10:53	2/3/2025 10:46	21L	D	CL30	LXJ532	NMS03	77.9
Welsch	2/3/2025 10:55	2/3/2025 10:46	21L	D	CL30	LXJ532	NMS03	77.9
Welsch	2/3/2025 10:56	2/3/2025 10:43	21L	D	C172	N404DC		
Welsch	2/3/2025 10:56	2/3/2025 10:43	21L	D	C172	N404DC		
Welsch	2/3/2025 11:01	2/3/2025 11:00	21R	D	P28A	N11CA	NMS03	75
Edwards	2/3/2025 11:04	2/3/2025 10:56	UNK	O	H60	G20772		
Welsch	2/3/2025 12:00	2/3/2025 11:54	21R	T	C72R	N106AF		
Welsch	2/3/2025 12:05	2/3/2025 11:55	21R	T	BE24	N18841		
Welsch	2/3/2025 12:10	2/3/2025 11:59	21L	D	C172	N19646		
Welsch	2/3/2025 12:14	2/3/2025 12:01	21R	D	E55P	JJZ317		
Welsch	2/3/2025 12:18	2/3/2025 12:01	21R	D	BE36	N972EB		
Welsch	2/3/2025 12:19	2/3/2025 12:01	21R	D	BE36	N972EB		
Welsch	2/3/2025 12:23	2/3/2025 12:10	21L	D	PRMI	N273KT	NMS03	75.1
Welsch	2/3/2025 12:26	2/3/2025 12:10	21L	D	PRMI	N273KT	NMS03	75.1
Welsch	2/3/2025 12:36	2/3/2025 12:26	21R	D	AA5	N1592R		
Welsch	2/3/2025 12:38	2/3/2025 12:26	21R	D	AA5	N1592R		
Welsch	2/3/2025 12:45	2/3/2025 12:42	21R	D	C150	N22318		

Welsch	2/3/2025 13:11	2/3/2025 13:05	21R	D	S22T	N33167		
Edwards	2/3/2025 13:35	2/3/2025 13:42	21L	A	GLF6	N595TG		
Welsch	2/3/2025 13:39	2/3/2025 13:39	21L	D	GLF4	N500GF		
Welsch	2/3/2025 13:52	2/3/2025 13:51	21R	T	C172	N5229D		
Edwards	2/3/2025 15:10	2/3/2025 14:53	UNK	O	S64	N4037S		
Welsch	2/3/2025 16:44	2/3/2025 16:36	21R	T	BE24	N18841	NMS03	80.1
Welsch	2/3/2025 16:45	2/3/2025 16:36	21R	T	BE24	N18841	NMS03	80.1
Edwards	2/3/2025 18:14	2/3/2025 18:23	21L	A	C421	N80LG		
Edwards	2/3/2025 19:23	2/3/2025 19:30	21L	A	PC12	CNS848		
Edwards	2/3/2025 19:27	2/3/2025 19:35	21L	A	BE20	CTE585		
Edwards	2/3/2025 19:31	2/3/2025 19:41	21L	A	BE36	GTX501		
Welsch	2/3/2025 19:37	2/3/2025 19:31	21R	D	P28A	N11CA		
Welsch	2/3/2025 19:39	2/3/2025 19:12	21L	D	C25B	FIH70	NMS03	68
Welsch	2/3/2025 19:48	2/3/2025 19:32	21R	D	SR20	N362BZ	NMS03	70.6
Welsch	2/3/2025 19:51	2/3/2025 19:49	21R	D	P28A	N6919J		
Welsch	2/3/2025 19:52	2/3/2025 19:49	21R	D	P28A	N6919J		
Welsch	2/3/2025 20:02	2/3/2025 20:13	21R	D	P28A	N11CA	NMS03	69.4
Welsch	2/3/2025 20:03	2/3/2025 20:13	21R	D	P28A	N11CA	NMS03	69.4
Welsch	2/3/2025 20:13	2/3/2025 20:13	21R	D	P28A	N11CA	NMS03	69.4
Welsch	2/3/2025 20:14	2/3/2025 20:13	21R	D	P28A	N11CA	NMS03	69.4
Welsch	2/3/2025 20:16	2/3/2025 20:13	21R	D	P28A	N11CA	NMS03	69.4
Welsch	2/3/2025 20:19	2/3/2025 20:13	21R	D	P28A	N11CA	NMS03	69.4
Welsch	2/3/2025 20:20	2/3/2025 20:13	21R	D	P28A	N11CA	NMS03	69.4
Welsch	2/3/2025	2/3/2025	21R	D	P28A	N11CA	NMS03	69.4

	20:22	20:13						
Welsch	2/3/2025 20:23	2/3/2025 20:13	21R	D	P28A	N11CA	NMS03	69.4
Welsch	2/3/2025 20:25	2/3/2025 20:13	21R	D	P28A	N11CA	NMS03	69.4
Welsch	2/3/2025 20:31	2/3/2025 20:35	21L	A	SR20	N753JT		
Kempter	2/3/2025 21:20	2/3/2025 21:19	21R	D	P28A	N11CA	NMS03	67.7
Kempter	2/3/2025 21:23	2/3/2025 21:02	UNK	O	P28A	NIT291	NMS03	67.8
Kempter	2/3/2025 21:24	2/3/2025 21:02	UNK	O	P28A	NIT291	NMS03	67.8
Kempter	2/3/2025 21:29	2/3/2025 21:02	UNK	O	P28A	NIT291	NMS03	67.8
Johnson	2/3/2025 22:03	2/3/2025 21:54	03L	D	R44	N543BZ		
Feldman	2/3/2025 22:08	2/3/2025 21:53	21L	D	PC24	N97NH		
Kempter	2/3/2025 22:41	2/3/2025 22:30	21L	D	TBM7	N657MA		
Welsch	2/3/2025 22:42	2/3/2025 22:30	21L	D	TBM7	N657MA		
Lowndes	2/3/2025 23:23	2/3/2025 23:40	21L	A	TBM7	N651WB		
Feldman	2/4/2025 4:24	2/4/2025 4:18	03R	D	PC12	SKQ31		
Feldman	2/4/2025 4:27	2/4/2025 4:18	03R	D	PC12	SKQ31		
Feldman	2/4/2025 6:55	2/4/2025 6:55	21R	D	P28A	N11CA		
Feldman	2/4/2025 7:12	2/4/2025 7:08	21L	D	GLF5	N640W		
Kempter	2/4/2025 7:14	2/4/2025 7:13	21R	D	P28A	CXK320		
Kempter	2/4/2025 7:14	2/4/2025 7:13	21R	D	P28A	CXK320		
Kempter	2/4/2025 7:14	2/4/2025 7:13	21R	D	P28A	CXK320		
Kempter	2/4/2025 7:27	2/4/2025 7:33	21R	D	P28A	CXK271		
Kempter	2/4/2025 7:32	2/4/2025 7:33	21R	D	P28A	CXK271		
Kempter	2/4/2025 7:37	2/4/2025 7:22	21R	D	P28A	CXK320		
Kempter	2/4/2025 7:37	2/4/2025 7:22	21R	D	P28A	CXK320		
Kempter	2/4/2025 7:40	2/4/2025 7:22	21R	D	P28A	CXK320		
Kempter	2/4/2025 7:43	2/4/2025 7:26	21R	D	C172	N7339M		
Kempter	2/4/2025 7:54	2/4/2025 7:42	21R	D	P28A	CXK271		
Paskevich	2/4/2025 12:02	2/4/2025 12:08	03R	A	PC12	N75WH		
Paskevich	2/4/2025 12:13	2/4/2025 12:19	03R	A	BE9L	N543GA		
Paskevich	2/4/2025 12:41	2/4/2025 12:45	03R	A	CL60	EJA263		

Paskevich	2/4/2025 14:06	2/4/2025 14:21	03R	A	GALX	N703MS		
Paskevich	2/4/2025 17:58	2/4/2025 18:02	03R	A	C56X	N906DK		
Gill	2/4/2025 18:40	2/4/2025 18:18	03L	T	P28A	N11CA		
Lowndes	2/4/2025 18:49	2/4/2025 18:31	03L	D	SR22	N321GK		
Lowndes	2/4/2025 18:52	2/4/2025 18:46	03R	D	E50P	N348N		
Lowndes	2/4/2025 19:03	2/4/2025 18:51	03R	D	BE9L	N543GA		
Paskevich	2/4/2025 19:34	2/4/2025 19:25	UNK	O	CL30	N828SK		
Paskevich	2/4/2025 19:36	2/4/2025 19:27	UNK	O	G280	N1540		
Paskevich	2/4/2025 19:43	2/4/2025 19:36	UNK	O	S22T	N767JR		
Paskevich	2/4/2025 20:39	2/4/2025 20:43	03R	A	BE30	N327R		
Feldman	2/4/2025 20:41	2/4/2025 20:42	03R	A	GLF4	N456CP		
Feldman	2/4/2025 20:50	2/4/2025 20:57	03L	A	C172	N7339M		
Kempter	2/4/2025 20:58	2/4/2025 21:06	21R	A	P28A	N11CA		
Kempter	2/4/2025 21:05	2/4/2025 21:05	UNK	D	P28A	N95111		
Sheppard	2/4/2025 21:11	2/4/2025 21:06	21L	D	C25A	N525J		
Feldman	2/4/2025 21:11	2/4/2025 21:06	21L	D	C25A	N525J		
Johnson	2/4/2025 22:47	2/4/2025 22:59	21L	A	SF50	N21VJ	NMS01	72.8
Johnson	2/4/2025 22:47	2/4/2025 22:59	21L	A	SF50	N21VJ	NMS01	72.8
Feldman	2/4/2025 23:54	2/4/2025 23:36	03R	D	LJ45	JLG429		
Welsch	2/5/2025 0:20	2/5/2025 0:24	03R	A	PC12	SKQ31	NMS03	70.3
Welsch	2/5/2025 1:06	2/5/2025 0:57	03R	D	C560	N577XW		
Edwards	2/5/2025 1:08	2/5/2025 0:57	03R	D	C560	N577XW		
Welsch	2/5/2025 2:28	2/5/2025 2:30	21R	A	LJ60	FID503		
Feldman	2/5/2025 2:28	2/5/2025 2:34	21L	A	C208	N414CY		
Welsch	2/5/2025 2:50	2/5/2025 2:49	21L	D	C208	N414CY	NMS03	73.7
Welsch	2/5/2025 3:33	2/5/2025 3:37	03R	A	PC12	SKQ31	NMS03	71.4
Welsch	2/5/2025 3:47	2/5/2025 3:49	03L	A	EC35	N883AE		

Welsch	2/5/2025 4:36	2/5/2025 4:31	UNK	D	EC35	N883AE	NMS03	68.8
Fox	2/5/2025 5:25	2/5/2025 5:02	21L	D	H25B	N108RL	NMS03	81.5
Feldman	2/5/2025 5:25	2/5/2025 5:02	21L	D	H25B	N108RL		
Paskevich	2/5/2025 5:26	2/5/2025 5:02	21L	D	H25B	N108RL		
Lowndes	2/5/2025 6:17	2/5/2025 5:52	03R	D	PC24	CNS5		
Feldman	2/5/2025 11:24	2/5/2025 11:08	21L	D	H25B	N502GF		
Feldman	2/5/2025 12:12	2/5/2025 12:18	UNK	T	B06	N6QP		
Feldman	2/5/2025 12:55	2/5/2025 13:01	21R	A	P28A	N6919J		
Feldman	2/5/2025 14:08	2/5/2025 14:11	21R	A	C172	N623KW		
Welsch	2/5/2025 15:05	2/5/2025 14:51	21L	D	BE40	N428HP	NMS03	79.4
Welsch	2/5/2025 15:12	2/5/2025 14:51	21L	D	BE40	N428HP	NMS03	79.4
Welsch	2/5/2025 15:21	2/5/2025 15:20	21R	T	P28A	N11CA		
Welsch	2/5/2025 15:22	2/5/2025 15:20	21R	T	P28A	N11CA		
Welsch	2/5/2025 15:23	2/5/2025 15:20	21R	T	P28A	N11CA		
Welsch	2/5/2025 15:31	2/5/2025 15:30	21R	D	P28A	CXK271		
Welsch	2/5/2025 15:32	2/5/2025 15:30	21R	D	P28A	CXK271		
Welsch	2/5/2025 15:33	2/5/2025 15:30	21R	D	P28A	CXK271		
Welsch	2/5/2025 15:39	2/5/2025 15:29	21L	D	CL30	N304KC	NMS03	71.6
Welsch	2/5/2025 15:40	2/5/2025 15:29	21L	D	CL30	N304KC	NMS03	71.6
Welsch	2/5/2025 15:42	2/5/2025 15:37	21L	D	C560	N905LC	NMS03	81.1
Welsch	2/5/2025 15:44	2/5/2025 15:37	21L	D	C560	N905LC	NMS03	81.1
Feldman	2/5/2025 15:44	2/5/2025 15:37	21L	D	C560	N905LC		
Welsch	2/5/2025 15:57	2/5/2025 15:52	21L	D	C310	N991GJ	NMS03	76.1
Paskevich	2/5/2025 15:59	2/5/2025 15:50	UNK	O	F900	N84HD		
Paskevich	2/5/2025 16:13	2/5/2025 16:07	UNK	O	C68A	EJA572		
Paskevich	2/5/2025	2/5/2025	UNK	O	F900	N98FE		

	16:17	16:08						
Welsch	2/5/2025 16:20	2/5/2025 16:09	21L	D	LJ60	N582MM		
Welsch	2/5/2025 16:27	2/5/2025 16:07	21R	T	AA5	N26103		
Welsch	2/5/2025 16:37	2/5/2025 16:36	UNK	T	P28A	N598A		
Welsch	2/5/2025 16:40	2/5/2025 16:36	UNK	T	P28A	N598A		
Welsch	2/5/2025 16:40	2/5/2025 16:36	UNK	T	P28A	N598A		
Welsch	2/5/2025 16:44	2/5/2025 16:20	21L	D	RV10	N213PL	NMS03	68.7
Welsch	2/5/2025 17:14	2/5/2025 17:13	21R	D	P28A	N11CA		
Welsch	2/5/2025 17:19	2/5/2025 17:13	21R	D	P28A	N11CA		
Welsch	2/5/2025 17:24	2/5/2025 17:13	21R	D	P28A	N11CA		
Welsch	2/5/2025 17:29	2/5/2025 17:33	21R	D	C172	N6981H		
Welsch	2/5/2025 17:30	2/5/2025 17:33	21R	D	C172	N6981H		
Welsch	2/5/2025 17:36	2/5/2025 17:36	21R	D	P28A	N296CA		
Welsch	2/5/2025 17:37	2/5/2025 17:36	21R	D	P28A	N296CA		
Welsch	2/5/2025 17:38	2/5/2025 17:36	21R	D	P28A	N296CA		
Welsch	2/5/2025 17:47	2/5/2025 17:46	21R	D	C172	N6981H		
Welsch	2/5/2025 17:52	2/5/2025 17:45	21L	D	PC12	N717NC	NMS03	70
Welsch	2/5/2025 17:55	2/5/2025 17:54	21L	D	C25A	N30M	NMS03	73.2
Welsch	2/5/2025 17:56	2/5/2025 17:54	21L	D	C25A	N30M	NMS03	73.2
Welsch	2/5/2025 17:57	2/5/2025 17:54	21L	D	C25A	N30M	NMS03	73.2
Welsch	2/5/2025 18:01	2/5/2025 17:54	21L	D	C25A	N30M	NMS03	73.2
Welsch	2/5/2025 18:04	2/5/2025 17:58	21L	D	BE9L	N8GU		
Welsch	2/5/2025 18:07	2/5/2025 18:14	UNK	A	CL35	N516WR	NMS03	80.6
Welsch	2/5/2025 18:09	2/5/2025 18:14	UNK	A	CL35	N516WR	NMS03	80.6

Welsch	2/5/2025 18:14	2/5/2025 18:14	UNK	A	CL35	N516WR	NMS03	80.6
Welsch	2/5/2025 18:19	2/5/2025 18:14	UNK	A	CL35	N516WR	NMS03	80.6
Welsch	2/5/2025 18:22	2/5/2025 18:14	UNK	A	CL35	N516WR	NMS03	80.6
Welsch	2/5/2025 18:29	2/5/2025 18:32	21L	A	RV10	N213PL		
Welsch	2/5/2025 19:07	2/5/2025 18:58	21L	D	BE9T	CGIEV		
Welsch	2/5/2025 19:11	2/5/2025 18:58	21L	D	BE9T	CGIEV		
Welsch	2/5/2025 20:02	2/5/2025 20:04	21L	A	CL60	N444KM		
Feldman	2/5/2025 20:22	2/5/2025 20:22	UNK	D	H47	HAIRY47		
Welsch	2/5/2025 21:43	2/5/2025 21:34	21L	D	CL60	N650VL	NMS03	69.5
Edwards	2/5/2025 21:51	2/5/2025 22:00	21L	A	GLF5	N306BD		
Kempter	2/5/2025 22:35	2/5/2025 22:28	21L	D	GLF5	N306BD	NMS03	78.7
Welsch	2/5/2025 22:48	2/5/2025 22:47	21L	D	BE9L	N8GU	NMS03	70.7
Kempter	2/5/2025 22:48	2/5/2025 22:47	21L	D	BE9L	N8GU	NMS03	70.7
Kempter	2/5/2025 22:54	2/5/2025 22:45	21L	D	PC12	SKQ31	NMS03	69.4
Kempter	2/5/2025 22:57	2/5/2025 22:48	21L	D	CL35	EJA765	NMS03	74.9
Feldman	2/6/2025 2:33	2/6/2025 2:30	21L	D	C208	N414CY		
Feldman	2/6/2025 2:35	2/6/2025 2:30	21L	D	C208	N414CY		
Feldman	2/6/2025 3:41	2/6/2025 3:35	03R	D	C560	N577XW		
Welsch	2/6/2025 12:34	2/6/2025 12:16	16	D	B06	N46CL		
Johnson	2/6/2025 12:47	2/6/2025 12:49	21L	A	B350	WUP848	NMS01	67.3
Johnson	2/6/2025 12:47	2/6/2025 12:49	21L	A	B350	WUP848	NMS01	67.3
Johnson	2/6/2025 12:48	2/6/2025 12:49	21L	A	B350	WUP848	NMS01	67.3
Welsch	2/6/2025 12:54	2/6/2025 12:52	21L	D	PC12	N265NX		
Welsch	2/6/2025 13:03	2/6/2025 12:55	21L	D	GLF5	N427HG		
Welsch	2/6/2025	2/6/2025	21L	D	C550	PXG453	NMS03	79.9



	13:06	12:58						
Welsch	2/6/2025 13:06	2/6/2025 12:58	21L	D	C550	PXG453	NMS03	79.9
Welsch	2/6/2025 13:07	2/6/2025 12:58	21L	D	PC12	N895CR	NMS03	71.6
Welsch	2/6/2025 13:08	2/6/2025 12:58	21L	D	PC12	N895CR	NMS03	71.6
Welsch	2/6/2025 13:09	2/6/2025 12:58	21L	D	PC12	N895CR	NMS03	71.6
Feldman	2/6/2025 13:17	2/6/2025 12:58	21L	D	GLF4	LX456		
Welsch	2/6/2025 14:47	2/6/2025 14:45	21L	D	GLF4	EJMB85		
Welsch	2/6/2025 14:48	2/6/2025 14:45	21L	D	GLF4	EJMB85		
Feldman	2/6/2025 15:51	2/6/2025 15:52	21L	A	BE30	CFDIP		
Fibus	2/6/2025 15:57	2/6/2025 15:55	UNK	D	B06	N46CL		
Welsch	2/6/2025 19:20	2/6/2025 19:11	21L	D	B350	WUP832	NMS03	69.9
Welsch	2/6/2025 19:27	2/6/2025 19:11	21L	D	B350	WUP832	NMS03	69.9
Welsch	2/6/2025 19:29	2/6/2025 19:11	21L	D	B350	WUP832	NMS03	69.9
Welsch	2/6/2025 19:37	2/6/2025 19:36	21L	D	CL60	EJA257	NMS03	68.7
Welsch	2/6/2025 19:48	2/6/2025 19:47	21R	D	P28A	N703CA	NMS03	68.5
Welsch	2/6/2025 19:53	2/6/2025 19:47	21R	D	P28A	N703CA	NMS03	68.5
Welsch	2/6/2025 20:28	2/6/2025 20:27	21L	D	PC12	N247LC	NMS03	73.9
Johnson	2/7/2025 0:19	2/7/2025 0:21	21L	A	BE30	WUP891	NMS01	84.5
Johnson	2/7/2025 0:20	2/7/2025 0:21	21L	A	BE30	WUP891	NMS01	84.5
Feldman	2/7/2025 0:28	2/7/2025 0:25	21R	D	PA32	N292AW		
Dykewicz	2/7/2025 1:29	2/7/2025 1:16	21L	D	C560	PXG691		
Welsch	2/7/2025 1:29	2/7/2025 1:16	21L	D	C560	PXG691	NMS03	77.9
Welsch	2/7/2025 2:57	2/7/2025 2:30	21L	D	C56X	PXG985	NMS03	77.6
Welsch	2/7/2025 3:12	2/7/2025 3:05	21L	D	PC12	SKQ31		
Feldman	2/7/2025 3:52	2/7/2025 3:26	21L	D	BE40	N9WW		
Welsch	2/7/2025 3:53	2/7/2025 3:26	21L	D	BE40	N9WW	NMS03	78.3
Gerondelis	2/7/2025 3:54	2/7/2025 3:26	21L	D	BE40	N9WW		
Welsch	2/7/2025 4:55	2/7/2025 4:47	21L	D	C25A	N127MJ	NMS03	80.1
Welsch	2/7/2025 5:23	2/7/2025 5:36	26R	A	B763	N192DN		

Welsch	2/7/2025 7:29	2/7/2025 7:28	21R	D	P28A	CXK271		
Welsch	2/7/2025 7:44	2/7/2025 7:39	21L	D	LJ60	JSL41		
Welsch	2/7/2025 7:45	2/7/2025 7:39	21L	D	LJ60	JSL41		
Welsch	2/7/2025 7:47	2/7/2025 7:21	21L	D	PC12	CNS1209	NMS03	74.4
Welsch	2/7/2025 8:04	2/7/2025 7:56	21L	D	CL60	EJA209	NMS03	74.7
Welsch	2/7/2025 8:46	2/7/2025 8:40	21L	D	GLF4	LX455	NMS03	74.7
Welsch	2/7/2025 9:16	2/7/2025 8:59	21L	D	E550	N602EE		
Welsch	2/7/2025 9:19	2/7/2025 8:59	21R	D	C172	N404DC		
Welsch	2/7/2025 10:13	2/7/2025 10:13	21R	D	SR20	N5347D		
Welsch	2/7/2025 10:20	2/7/2025 10:19	21R	D	P28A	CXK271		
Welsch	2/7/2025 10:26	2/7/2025 10:20	21L	D	CL30	N773RC	NMS03	74.7
Welsch	2/7/2025 10:28	2/7/2025 10:20	21L	D	CL30	N773RC	NMS03	74.7
Welsch	2/7/2025 10:37	2/7/2025 10:36	21R	D	F900	N116RW		
Paskevich	2/7/2025 10:38	2/7/2025 10:38	UNK	O	E55P	N444MN		
Welsch	2/7/2025 10:42	2/7/2025 10:34	21L	D	PA46	N9GF	NMS03	84.3
Welsch	2/7/2025 10:44	2/7/2025 10:40	21L	D	G280	N280HX	NMS03	66.8
Welsch	2/7/2025 10:47	2/7/2025 10:31	21R	D	SR20	N225RP		
Welsch	2/7/2025 10:48	2/7/2025 10:31	21R	D	SR20	N225RP		
Barnett	2/7/2025 11:11	2/7/2025 10:52	UNK	T	B06	N46CL		
Welsch	2/7/2025 11:38	2/7/2025 11:14	21R	D	RV7	N20020	NMS03	71.3
Welsch	2/7/2025 11:39	2/7/2025 11:14	21R	D	RV7	N20020	NMS03	71.3
Welsch	2/7/2025 11:40	2/7/2025 11:25	21R	D	T206	N527DM	NMS03	75.2
Welsch	2/7/2025 11:56	2/7/2025 11:54	21R	D	P28A	N11CA		
Welsch	2/7/2025 11:59	2/7/2025 11:57	21L	D	C680	EJA317	NMS03	69.7
Lowndes	2/7/2025 12:36	2/7/2025 12:41	21L	A	S22T	N220RG		
Welsch	2/7/2025 12:50	2/7/2025 12:32	21L	D	C172	N704RB	NMS03	69.3
Welsch	2/7/2025 12:56	2/7/2025 12:47	21R	T	PIAT	N227AT		

Welsch	2/7/2025 12:57	2/7/2025 12:47	21R	T	PIAT	N227AT		
Welsch	2/7/2025 12:59	2/7/2025 12:46	21L	D	BE30	CFDIP		
Welsch	2/7/2025 13:00	2/7/2025 12:46	21L	D	BE30	CFDIP		
Welsch	2/7/2025 13:05	2/7/2025 12:57	21R	D	ASTR	N331AJ		
Welsch	2/7/2025 13:05	2/7/2025 12:57	21R	D	ASTR	N331AJ		
Welsch	2/7/2025 13:06	2/7/2025 12:57	21R	D	ASTR	N331AJ		
Welsch	2/7/2025 13:07	2/7/2025 13:01	21L	D	SR22	N787PL		
Welsch	2/7/2025 13:09	2/7/2025 13:01	21L	D	SR22	N787PL		
Welsch	2/7/2025 13:13	2/7/2025 12:50	21R	D	C172	N404DC		
Welsch	2/7/2025 13:15	2/7/2025 12:50	21R	D	C172	N404DC		
Welsch	2/7/2025 13:16	2/7/2025 13:11	21L	D	G280	N270PC		
Welsch	2/7/2025 13:18	2/7/2025 12:58	21R	D	S22T	N655CB		
Welsch	2/7/2025 13:21	2/7/2025 13:10	21L	D	BE30	WUP891		
Welsch	2/7/2025 13:23	2/7/2025 13:10	21L	D	BE30	WUP891		
Welsch	2/7/2025 13:24	2/7/2025 13:10	21L	D	BE30	WUP891		
Welsch	2/7/2025 13:24	2/7/2025 13:10	21L	D	BE30	WUP891		
Welsch	2/7/2025 13:27	2/7/2025 13:10	21L	D	BE30	WUP891		
Welsch	2/7/2025 13:32	2/7/2025 13:20	21L	D	C172	N314GT		
Welsch	2/7/2025 13:38	2/7/2025 13:23	21L	D	TBM7	N115WF		
Welsch	2/7/2025 13:43	2/7/2025 13:39	21R	D	ASTR	N327GA		
Welsch	2/7/2025 13:46	2/7/2025 13:39	21R	D	ASTR	N327GA		
Welsch	2/7/2025 13:48	2/7/2025 13:32	21R	D	BE36	N69GD		
Welsch	2/7/2025 13:59	2/7/2025 13:49	21L	D	P210	N55BE	NMS03	72.5
Welsch	2/7/2025	2/7/2025	21L	D	P210	N55BE	NMS03	72.5

	14:00	13:49						
Welsch	2/7/2025 14:09	2/7/2025 14:01	21L	D	GLEX	SIS28		
Hummel	2/7/2025 14:33	2/7/2025 14:19	UNK	O	BE58	N260AR		
Hummel	2/7/2025 14:36	2/7/2025 14:36	21L	D	H25B	ECJ72		
Welsch	2/7/2025 14:36	2/7/2025 14:22	21R	T	C72R	N106AF		
Hummel	2/7/2025 14:38	2/7/2025 14:36	21L	D	H25B	ECJ72		
Welsch	2/7/2025 14:38	2/7/2025 14:36	21L	D	H25B	ECJ72		
Hummel	2/7/2025 14:39	2/7/2025 14:36	21L	D	H25B	ECJ72		
Paskevich	2/7/2025 14:39	2/7/2025 14:28	UNK	O	G280	N1620		
Hummel	2/7/2025 14:41	2/7/2025 14:36	21L	D	H25B	ECJ72		
Hummel	2/7/2025 14:41	2/7/2025 14:36	21L	D	H25B	ECJ72		
Welsch	2/7/2025 14:42	2/7/2025 14:36	21L	D	H25B	ECJ72		
Welsch	2/7/2025 14:44	2/7/2025 14:36	21L	D	H25B	ECJ72		
Welsch	2/7/2025 14:53	2/7/2025 14:33	21R	T	C172	N623KW		
Welsch	2/7/2025 14:54	2/7/2025 14:33	21R	T	C172	N623KW		
Welsch	2/7/2025 14:56	2/7/2025 14:45	21R	D	P28A	N1205T		
Welsch	2/7/2025 15:00	2/7/2025 14:52	21R	D	P28A	N703CA		
Paskevich	2/7/2025 15:09	2/7/2025 15:22	UNK	O	CL30	N325TG		
Paskevich	2/7/2025 15:32	2/7/2025 15:22	UNK	O	CL30	N325TG		
Lowndes	2/7/2025 16:28	2/7/2025 16:30	21R	T	BE36	N3197M		
Welsch	2/7/2025 16:49	2/7/2025 16:48	21R	T	P28A	N296CA		
Welsch	2/7/2025 16:52	2/7/2025 16:41	21R	D	S22T	N958PG		
Welsch	2/7/2025 16:57	2/7/2025 16:45	21L	D	C172	N704RB	NMS03	71.8
Welsch	2/7/2025 16:58	2/7/2025 16:45	21L	D	C172	N704RB	NMS03	71.8

Hummel	2/7/2025 16:58	2/7/2025 16:45	21L	D	C172	N704RB		
Welsch	2/7/2025 16:58	2/7/2025 16:45	21L	D	C172	N704RB	NMS03	71.8
Hummel	2/7/2025 16:59	2/7/2025 16:45	21L	D	C172	N704RB		
Hummel	2/7/2025 17:00	2/7/2025 16:45	21L	D	C172	N704RB		
Welsch	2/7/2025 17:02	2/7/2025 16:58	21L	D	GLF6	N916AA	NMS03	80.9
Welsch	2/7/2025 17:04	2/7/2025 17:05	21R	D	P28A	N6919J		
Welsch	2/7/2025 17:06	2/7/2025 17:05	21R	D	P28A	N6919J		
Welsch	2/7/2025 17:08	2/7/2025 17:05	21R	D	P28A	N6919J		
Welsch	2/7/2025 17:10	2/7/2025 17:05	21R	D	P28A	N6919J		
Welsch	2/7/2025 17:14	2/7/2025 17:05	21R	D	P28A	N6919J		
Welsch	2/7/2025 17:20	2/7/2025 17:20	21L	D	C56X	EJA648	NMS03	75.4
Welsch	2/7/2025 17:26	2/7/2025 17:20	21L	D	C56X	EJA648	NMS03	75.4
Welsch	2/7/2025 17:37	2/7/2025 17:33	21L	D	CL60	N144MH		
Schneeberg	2/7/2025 17:38	2/7/2025 17:33	UNK	T	B06	N46CL		
Welsch	2/7/2025 17:39	2/7/2025 17:33	21L	D	CL60	N144MH		
Welsch	2/7/2025 17:45	2/7/2025 17:45	21L	A	BE58	N18VR		
Welsch	2/7/2025 17:47	2/7/2025 17:45	21L	A	BE58	N18VR		
Welsch	2/7/2025 17:48	2/7/2025 17:31	21L	D	CL35	BOG73	NMS03	71.6
Welsch	2/7/2025 17:49	2/7/2025 17:35	21R	T	P28A	N9405J		
Welsch	2/7/2025 17:52	2/7/2025 17:35	21R	T	P28A	N9405J		
Welsch	2/7/2025 17:58	2/7/2025 17:50	21L	D	E55P	EJA426		
Welsch	2/7/2025 18:02	2/7/2025 17:57	21R	D	C172	N6981H	NMS03	67.2
Welsch	2/7/2025 18:08	2/7/2025 18:11	21R	D	P28A	N296CA		
Welsch	2/7/2025	2/7/2025	21R	D	P28A	N296CA		

	18:12	18:11						
Welsch	2/7/2025 18:13	2/7/2025 18:09	21L	D	H25B	MVP620	NMS03	81.5
Welsch	2/7/2025 18:14	2/7/2025 18:09	21L	D	H25B	MVP620	NMS03	81.5
Schneeberg	2/7/2025 18:17	2/7/2025 18:11	21R	D	P28A	N296CA		
Welsch	2/7/2025 18:18	2/7/2025 17:58	21R	D	PIAT	N227AT		
Welsch	2/7/2025 18:19	2/7/2025 18:09	21L	D	S22T	N702SR	NMS03	69.9
Welsch	2/7/2025 18:23	2/7/2025 18:22	21R	D	P28A	N11CA		
Welsch	2/7/2025 18:24	2/7/2025 18:22	21R	D	P28A	N11CA		
Lowndes	2/7/2025 18:29	2/7/2025 18:37	21L	T	SR20	N225RP		
Welsch	2/7/2025 18:30	2/7/2025 18:33	21R	D	P28A	N11CA		
Welsch	2/7/2025 18:31	2/7/2025 18:33	21R	D	P28A	N11CA		
Welsch	2/7/2025 18:33	2/7/2025 18:33	21R	D	P28A	N11CA		
Welsch	2/7/2025 18:35	2/7/2025 18:33	21R	D	P28A	N11CA		
Welsch	2/7/2025 18:36	2/7/2025 18:33	21R	D	P28A	N11CA		
Welsch	2/7/2025 18:40	2/7/2025 18:23	21R	D	C172	N161GT		
Welsch	2/7/2025 18:41	2/7/2025 18:23	21R	D	C172	N161GT		
Welsch	2/7/2025 18:43	2/7/2025 18:28	21L	D	LJ60	JSL41	NMS03	69.6
Welsch	2/7/2025 18:46	2/7/2025 18:28	21L	D	LJ60	JSL41	NMS03	69.6
Lowndes	2/7/2025 18:48	2/7/2025 18:50	21L	A	CL60	N144MH		
Welsch	2/7/2025 18:51	2/7/2025 18:39	21R	T	C172	N73924		
Welsch	2/7/2025 18:51	2/7/2025 18:39	21R	T	C172	N73924		
Welsch	2/7/2025 19:14	2/7/2025 19:13	21R	D	P28A	N6919J		
Welsch	2/7/2025 19:25	2/7/2025 19:26	21R	D	P28A	N703CA		
Welsch	2/7/2025 19:27	2/7/2025 19:26	21R	D	P28A	N703CA		

Welsch	2/7/2025 19:34	2/7/2025 19:26	21R	D	P28A	N703CA		
Welsch	2/7/2025 19:43	2/7/2025 19:24	21R	D	P28A	N11CA	NMS03	66.8
Welsch	2/7/2025 19:49	2/7/2025 19:24	21R	D	P28A	N11CA	NMS03	66.8
Welsch	2/7/2025 19:56	2/7/2025 19:44	UNK	O	PC12	LBQ865		
Welsch	2/7/2025 19:58	2/7/2025 19:44	UNK	O	PC12	LBQ865		
Welsch	2/7/2025 20:13	2/7/2025 20:03	21L	D	BE30	N111SS	NMS03	70.9
Welsch	2/7/2025 21:15	2/7/2025 21:09	UNK	O	EC45	N445CH	NMS03	67.2
Kempter	2/7/2025 22:51	2/7/2025 22:37	21R	D	C172	N755WM		
Kempter	2/7/2025 23:08	2/7/2025 23:07	21L	D	C208	N414CY	NMS03	70.5
Kempter	2/7/2025 23:17	2/7/2025 23:05	21L	D	C172	N297CP		
Cone	2/8/2025 0:40	2/8/2025 0:16	21R	D	C172	N7848T	NMS02	67.6
Welsch	2/8/2025 7:24	2/8/2025 6:56	21L	D	GALX	N703MS	NMS03	77.8
Welsch	2/8/2025 8:10	2/8/2025 8:01	21L	D	TBM7	N5324W	NMS03	68.8
Welsch	2/8/2025 9:08	2/8/2025 9:00	21L	D	BE20	N332CA		
Welsch	2/8/2025 9:10	2/8/2025 8:57	21R	D	C82T	N2247T	NMS03	74.1
Welsch	2/8/2025 9:11	2/8/2025 8:57	21R	D	C82T	N2247T	NMS03	74.1
Welsch	2/8/2025 9:20	2/8/2025 9:01	21L	D	BE30	WUP886	NMS03	75
Welsch	2/8/2025 9:27	2/8/2025 9:07	21L	D	C25C	N3GB	NMS03	76.6
Welsch	2/8/2025 9:40	2/8/2025 9:40	21R	D	P28A	CXK515		
Welsch	2/8/2025 9:59	2/8/2025 9:39	21R	D	P28A	N78JM	NMS03	71.7
Welsch	2/8/2025 10:36	2/8/2025 10:20	21R	D	SR20	N490CD		
Welsch	2/8/2025 10:39	2/8/2025 10:20	21R	D	SR20	N490CD		
Welsch	2/8/2025 10:50	2/8/2025 10:43	21R	D	C210	N4DX		
Welsch	2/8/2025 10:56	2/8/2025 10:44	21L	D	BE30	WUP890	NMS03	72
Welsch	2/8/2025 11:19	2/8/2025 11:12	21L	D	MU2	N3GT		
Welsch	2/8/2025 11:24	2/8/2025 11:11	21L	D	C177	N19274	NMS03	75.5
Welsch	2/8/2025 11:28	2/8/2025 11:11	21L	D	C177	N19274	NMS03	75.5
Welsch	2/8/2025 11:37	2/8/2025 11:31	21L	D	BE40	N977JM	NMS03	82.7

Welsch	2/8/2025 11:39	2/8/2025 11:31	21L	D	BE40	N977JM	NMS03	82.7
Welsch	2/8/2025 11:43	2/8/2025 11:31	21L	D	BE40	N977JM	NMS03	82.7
Welsch	2/8/2025 11:45	2/8/2025 11:30	21L	D	PC12	CNS1119	NMS03	76.7
Welsch	2/8/2025 11:55	2/8/2025 11:41	21L	D	C25A	N525RP	NMS03	84.2
Welsch	2/8/2025 12:04	2/8/2025 11:49	21L	D	T206	N527DM		
Welsch	2/8/2025 12:46	2/8/2025 12:36	21L	D	C56X	JRE868		
Welsch	2/8/2025 12:48	2/8/2025 12:36	21L	D	C56X	JRE868		
Welsch	2/8/2025 12:52	2/8/2025 12:29	21R	D	SR22	N908DU		
Welsch	2/8/2025 12:53	2/8/2025 12:29	21R	D	SR22	N908DU		
Welsch	2/8/2025 12:56	2/8/2025 12:29	21R	D	SR22	N908DU		
Welsch	2/8/2025 12:59	2/8/2025 12:45	21L	D	BE30	WUP892	NMS03	73.4
Welsch	2/8/2025 13:02	2/8/2025 12:45	21L	D	BE30	WUP892	NMS03	73.4
Welsch	2/8/2025 13:04	2/8/2025 12:45	21L	D	BE30	WUP892	NMS03	73.4
Welsch	2/8/2025 13:05	2/8/2025 12:45	21L	D	BE30	WUP892	NMS03	73.4
Welsch	2/8/2025 13:08	2/8/2025 12:59	21R	T	P28A	N598A		
Welsch	2/8/2025 13:10	2/8/2025 12:59	21R	T	P28A	N598A		
Welsch	2/8/2025 13:13	2/8/2025 12:54	21R	D	P28A	N78JM	NMS03	74.3
Welsch	2/8/2025 13:15	2/8/2025 12:54	21R	D	P28A	N78JM	NMS03	74.3
Welsch	2/8/2025 13:16	2/8/2025 12:54	21R	D	P28A	N78JM	NMS03	74.3
Welsch	2/8/2025 13:19	2/8/2025 12:54	21R	D	P28A	N78JM	NMS03	74.3
Welsch	2/8/2025 13:20	2/8/2025 12:54	21R	D	P28A	N78JM	NMS03	74.3
Welsch	2/8/2025 13:24	2/8/2025 12:54	21R	D	P28A	N78JM	NMS03	74.3
Welsch	2/8/2025 13:27	2/8/2025 13:17	21L	D	HDJT	N512KR		
Welsch	2/8/2025	2/8/2025	21L	D	HDJT	N512KR		



	13:28	13:17						
Welsch	2/8/2025 13:30	2/8/2025 13:17	21L	D	HDJT	N512KR		
Welsch	2/8/2025 13:31	2/8/2025 13:17	21L	D	HDJT	N512KR		
Welsch	2/8/2025 13:32	2/8/2025 13:17	21L	D	HDJT	N512KR		
Welsch	2/8/2025 13:35	2/8/2025 13:17	21L	D	HDJT	N512KR		
Welsch	2/8/2025 13:41	2/8/2025 13:33	21R	D	C172	N404DC		
Welsch	2/8/2025 13:45	2/8/2025 13:33	21R	D	C172	N404DC		
Welsch	2/8/2025 13:46	2/8/2025 13:39	21L	D	P28R	N3231R		
Welsch	2/8/2025 13:50	2/8/2025 13:39	21L	D	P28R	N3231R		
Welsch	2/8/2025 13:52	2/8/2025 13:39	21L	D	P28R	N3231R		
Welsch	2/8/2025 13:56	2/8/2025 13:32	21L	D	C25B	NJMB25		
Welsch	2/8/2025 13:57	2/8/2025 13:32	21L	D	C25B	NJMB25		
Welsch	2/8/2025 14:02	2/8/2025 13:32	21L	D	C25B	NJMB25		
Welsch	2/8/2025 14:07	2/8/2025 13:39	21L	D	P28R	N3231R		
Welsch	2/8/2025 14:12	2/8/2025 14:10	21L	D	BE95	N553W	NMS03	80.7
Welsch	2/8/2025 14:16	2/8/2025 14:10	21L	D	BE95	N553W	NMS03	80.7
Welsch	2/8/2025 14:18	2/8/2025 14:10	21L	D	BE95	N553W	NMS03	80.7
Welsch	2/8/2025 14:21	2/8/2025 14:10	21L	D	BE95	N553W	NMS03	80.7
Welsch	2/8/2025 14:22	2/8/2025 14:10	21L	D	BE95	N553W	NMS03	80.7
Welsch	2/8/2025 14:25	2/8/2025 14:20	21L	D	C56X	EJA577	NMS03	73.2
Welsch	2/8/2025 14:34	2/8/2025 14:31	21R	T	C172	N4454R	NMS03	73.6
Welsch	2/8/2025 14:51	2/8/2025 15:01	21R	T	C150	N63406		
Welsch	2/8/2025 14:56	2/8/2025 15:01	21R	T	C150	N63406		
Welsch	2/8/2025 14:57	2/8/2025 15:01	21R	T	C150	N63406		

Welsch	2/8/2025 15:01	2/8/2025 14:50	21R	D	P28A	N703CA		
Welsch	2/8/2025 15:06	2/8/2025 14:51	21R	D	P32R	N4138Q		
Welsch	2/8/2025 15:08	2/8/2025 14:51	21R	D	P32R	N4138Q		
Welsch	2/8/2025 15:09	2/8/2025 15:09	21R	D	P28A	N6919J		
Welsch	2/8/2025 15:10	2/8/2025 15:09	21R	D	P28A	N6919J		
Welsch	2/8/2025 15:11	2/8/2025 15:09	21R	D	P28A	N6919J		
Welsch	2/8/2025 15:16	2/8/2025 15:02	21L	D	C25B	JRE794	NMS03	77.4
Welsch	2/8/2025 15:24	2/8/2025 15:23	21R	D	P28A	N11CA	NMS03	68.1
Welsch	2/8/2025 15:30	2/8/2025 15:29	21L	D	C56X	JRE821	NMS03	76.2
Welsch	2/8/2025 15:51	2/8/2025 15:46	21R	D	C72R	N178AF		
Welsch	2/8/2025 15:54	2/8/2025 15:46	21R	D	C72R	N178AF		
Welsch	2/8/2025 15:55	2/8/2025 15:38	21R	D	SR20	N102GG		
Welsch	2/8/2025 16:01	2/8/2025 16:11	34	A	EC45	N445CH	NMS03	72.9
Welsch	2/8/2025 16:03	2/8/2025 16:11	34	A	EC45	N445CH	NMS03	72.9
Welsch	2/8/2025 16:23	2/8/2025 16:23	21L	T	C172	N62855		
Welsch	2/8/2025 16:28	2/8/2025 16:23	21L	T	C172	N62855		
Welsch	2/8/2025 16:29	2/8/2025 16:18	21R	D	C172	N124RC		
Welsch	2/8/2025 16:30	2/8/2025 16:18	21R	D	C172	N124RC		
Welsch	2/8/2025 16:32	2/8/2025 16:18	21R	D	C172	N124RC		
Kempter	2/8/2025 16:34	2/8/2025 16:35	21R	T	P28A	N11CA		
Welsch	2/8/2025 16:34	2/8/2025 16:35	21R	T	P28A	N11CA		
Kempter	2/8/2025 16:34	2/8/2025 16:35	21R	T	P28A	N11CA		
Kempter	2/8/2025 16:35	2/8/2025 16:35	21R	T	P28A	N11CA		
Welsch	2/8/2025	2/8/2025	21R	T	P28A	N11CA		

	16:36	16:35						
Welsch	2/8/2025 16:37	2/8/2025 16:45	UNK	A	GLF6	N148B	NMS03	68.9
Kempster	2/8/2025 16:37	2/8/2025 16:37	21R	D	P28A	N6919J		
Kempster	2/8/2025 16:38	2/8/2025 16:37	21R	D	P28A	N6919J		
Welsch	2/8/2025 16:38	2/8/2025 16:45	UNK	A	GLF6	N148B	NMS03	68.9
Kempster	2/8/2025 16:39	2/8/2025 16:37	21R	D	P28A	N6919J		
Welsch	2/8/2025 16:39	2/8/2025 16:45	UNK	A	GLF6	N148B	NMS03	68.9
Kempster	2/8/2025 16:39	2/8/2025 16:37	21R	D	P28A	N6919J		
Welsch	2/8/2025 16:40	2/8/2025 16:45	UNK	A	GLF6	N148B	NMS03	68.9
Kempster	2/8/2025 16:41	2/8/2025 16:15	UNK	D	P28A	CXK320		
Welsch	2/8/2025 16:42	2/8/2025 16:45	UNK	A	GLF6	N148B	NMS03	68.9
Kempster	2/8/2025 16:43	2/8/2025 16:15	UNK	D	P28A	CXK320		
Welsch	2/8/2025 16:44	2/8/2025 16:45	UNK	A	GLF6	N148B	NMS03	68.9
Welsch	2/8/2025 16:45	2/8/2025 16:29	21L	T	P28A	N6743F	NMS03	70.6
Welsch	2/8/2025 16:47	2/8/2025 16:29	21L	T	P28A	N6743F	NMS03	70.6
Kempster	2/8/2025 16:47	2/8/2025 16:29	21L	T	P28A	N6743F	NMS03	70.6
Welsch	2/8/2025 16:47	2/8/2025 16:29	21L	T	P28A	N6743F	NMS03	70.6
Kempster	2/8/2025 16:47	2/8/2025 16:29	21L	T	P28A	N6743F	NMS03	70.6
Welsch	2/8/2025 16:48	2/8/2025 16:58	UNK	A	GL5T	EJA131	NMS03	82.2
Kempster	2/8/2025 16:48	2/8/2025 16:54	21R	D	P28A	N598A		
Welsch	2/8/2025 16:51	2/8/2025 16:58	UNK	A	GL5T	EJA131	NMS03	82.2
Kempster	2/8/2025 16:51	2/8/2025 16:54	21R	D	P28A	N598A		
Welsch	2/8/2025 16:52	2/8/2025 16:58	UNK	A	GL5T	EJA131	NMS03	82.2
Kempster	2/8/2025 16:52	2/8/2025 16:54	21R	D	P28A	N598A		

Welsch	2/8/2025 16:53	2/8/2025 16:58	UNK	A	GL5T	EJA131	NMS03	82.2
Kempter	2/8/2025 16:53	2/8/2025 16:54	21R	D	P28A	N598A		
Welsch	2/8/2025 16:55	2/8/2025 16:58	UNK	A	GL5T	EJA131	NMS03	82.2
Kempter	2/8/2025 16:55	2/8/2025 16:54	21R	D	P28A	N598A		
Welsch	2/8/2025 16:58	2/8/2025 16:49	21R	D	P28A	N1205T		
Welsch	2/8/2025 17:01	2/8/2025 16:47	21R	T	P28A	N296CA		
Kempter	2/8/2025 17:01	2/8/2025 17:03	21R	D	P28A	CXK320		
Kempter	2/8/2025 17:03	2/8/2025 17:03	21R	D	P28A	CXK320		
Welsch	2/8/2025 17:03	2/8/2025 16:47	21R	T	P28A	N296CA		
Kempter	2/8/2025 17:04	2/8/2025 17:03	21R	D	P28A	CXK320		
Welsch	2/8/2025 17:07	2/8/2025 17:03	21R	D	P28A	CXK320		
Welsch	2/8/2025 17:08	2/8/2025 17:03	21R	D	P28A	CXK320		
Kempter	2/8/2025 17:12	2/8/2025 16:47	21R	T	P28A	N296CA		
Welsch	2/8/2025 17:12	2/8/2025 17:03	21R	D	P28A	CXK320		
Welsch	2/8/2025 17:15	2/8/2025 17:15	21R	D	P28R	N541HF	NMS03	72.3
Kempter	2/8/2025 17:15	2/8/2025 16:47	21R	T	P28A	N296CA		
Welsch	2/8/2025 17:15	2/8/2025 17:15	21R	D	P28R	N541HF	NMS03	72.3
Welsch	2/8/2025 17:24	2/8/2025 17:23	21R	T	P28A	N703CA		
Schneeberg	2/8/2025 17:27	2/8/2025 17:23	21R	T	P28A	N703CA		
Welsch	2/8/2025 17:35	2/8/2025 17:23	21L	D	BE40	N49AS		
Welsch	2/8/2025 17:37	2/8/2025 17:38	21R	D	P28A	N703CA		
Welsch	2/8/2025 17:39	2/8/2025 17:38	21R	D	P28A	N703CA		
Welsch	2/8/2025 17:41	2/8/2025 17:29	21R	D	PIAT	N227AT	NMS03	78.4
Welsch	2/8/2025	2/8/2025	21R	D	CL35	N179RP		

	17:52	17:47						
Welsch	2/8/2025 17:56	2/8/2025 17:47	21R	D	CL35	N179RP		
Welsch	2/8/2025 17:58	2/8/2025 17:57	21R	T	P28A	N6919J		
Welsch	2/8/2025 18:14	2/8/2025 17:44	21L	T	C68A	EJA924	NMS03	72.9
Welsch	2/8/2025 18:19	2/8/2025 18:21	21L	D	H25B	N800NJ	NMS03	78.9
Welsch	2/8/2025 18:21	2/8/2025 18:21	21L	D	H25B	N800NJ	NMS03	78.9
Welsch	2/8/2025 18:26	2/8/2025 18:20	21L	D	C680	EJA324	NMS03	76.7
Barnett	2/8/2025 18:27	2/8/2025 18:26	UNK	D	B06	N355AE		
Welsch	2/8/2025 18:28	2/8/2025 18:20	21L	D	C680	EJA324	NMS03	76.7
Welsch	2/8/2025 18:33	2/8/2025 18:32	UNK	D	P28A	N598A		
Welsch	2/8/2025 18:35	2/8/2025 18:32	UNK	D	P28A	N598A		
Welsch	2/8/2025 18:38	2/8/2025 18:27	21R	D	P28A	N703CA		
Welsch	2/8/2025 18:39	2/8/2025 18:27	21R	D	P28A	N703CA		
Welsch	2/8/2025 18:41	2/8/2025 18:27	21R	D	C172	N161GT		
Welsch	2/8/2025 19:06	2/8/2025 18:56	21R	T	C72R	N178AF		
Welsch	2/8/2025 19:07	2/8/2025 18:56	21R	T	C72R	N178AF		
Kempter	2/8/2025 19:14	2/8/2025 18:56	21L	D	GALX	N54CM	NMS03	79.7
Welsch	2/8/2025 19:16	2/8/2025 18:56	21L	D	GALX	N54CM	NMS03	79.7
Kempter	2/8/2025 19:16	2/8/2025 19:15	21R	D	P28R	N541HF		
Welsch	2/8/2025 19:38	2/8/2025 19:19	21R	D	P28A	N292JE		
Welsch	2/8/2025 19:50	2/8/2025 19:49	21R	T	P28A	N11CA	NMS03	68.6
Welsch	2/8/2025 19:57	2/8/2025 19:49	21R	T	P28A	N11CA	NMS03	68.6
Welsch	2/8/2025 20:04	2/8/2025 19:49	21R	T	P28A	N11CA	NMS03	68.6
Welsch	2/8/2025 20:10	2/8/2025 19:49	21R	T	P28A	N11CA	NMS03	68.6

Welsch	2/8/2025 20:16	2/8/2025 19:49	21R	T	P28A	N11CA	NMS03	68.6
Welsch	2/8/2025 20:21	2/8/2025 20:09	UNK	O	C182	N512JG	NMS03	79
Welsch	2/8/2025 20:30	2/8/2025 20:09	UNK	O	C182	N512JG	NMS03	79
Welsch	2/8/2025 20:36	2/8/2025 20:09	UNK	O	C182	N512JG	NMS03	79
Welsch	2/8/2025 21:21	2/8/2025 21:20	21R	D	P28A	N11CA	NMS03	66.8
Kempter	2/8/2025 21:21	2/8/2025 21:20	21R	D	P28A	N11CA	NMS03	66.8
Welsch	2/8/2025 21:27	2/8/2025 21:21	21R	D	F2TH	N909MM	NMS03	77.1
Kempter	2/8/2025 22:18	2/8/2025 21:59	UNK	O	C150	N6705S		
Welsch	2/8/2025 22:56	2/8/2025 22:57	03R	A	B06	N553AE	NMS03	76.9
Feldman	2/9/2025 4:26	2/9/2025 4:04	21L	D	H25B	MJS7502		
Welsch	2/9/2025 5:52	2/9/2025 5:51	21L	D	GLF4	N456CP	NMS03	79.5
Feldman	2/9/2025 5:52	2/9/2025 5:51	21L	D	GLF4	N456CP		
Welsch	2/9/2025 6:09	2/9/2025 5:41	21L	D	PC12	CNS1029		
Welsch	2/9/2025 6:20	2/9/2025 5:51	21L	D	GLF4	N456CP	NMS03	79.5
Welsch	2/9/2025 8:43	2/9/2025 8:14	21L	D	C25B	JRE749	NMS03	79.6
Paskevich	2/9/2025 9:24	2/9/2025 9:08	21L	D	BE30	WUP886		
Welsch	2/9/2025 10:24	2/9/2025 10:18	21R	D	C172	N6981H		
Welsch	2/9/2025 10:30	2/9/2025 10:18	21R	D	C172	N6981H		
Welsch	2/9/2025 10:34	2/9/2025 10:38	21L	D	C700	EJA814	NMS03	76.2
Welsch	2/9/2025 10:36	2/9/2025 10:38	21L	D	C700	EJA814	NMS03	76.2
Welsch	2/9/2025 10:42	2/9/2025 10:38	21L	D	C700	EJA814	NMS03	76.2
Welsch	2/9/2025 10:48	2/9/2025 10:38	21L	D	C700	EJA814	NMS03	76.2
Welsch	2/9/2025 10:54	2/9/2025 11:01	21R	D	M20P	N2674W	NMS03	68.5
Welsch	2/9/2025 11:02	2/9/2025 11:01	21R	D	M20P	N2674W	NMS03	68.5
Welsch	2/9/2025 11:10	2/9/2025 11:09	21R	D	SR20	N5347D	NMS03	70.1
Welsch	2/9/2025 11:21	2/9/2025 11:20	21R	D	C177	N19274		
Welsch	2/9/2025	2/9/2025	21L	D	C56X	N818BL		

	11:27	11:15						
Welsch	2/9/2025 11:31	2/9/2025 11:19	21L	D	C56X	EJA693	NMS03	71.6
Welsch	2/9/2025 11:32	2/9/2025 11:19	21L	D	C56X	EJA693	NMS03	71.6
Welsch	2/9/2025 11:34	2/9/2025 11:19	21L	D	C56X	EJA693	NMS03	71.6
Welsch	2/9/2025 11:37	2/9/2025 11:34	21R	T	P28A	N6919J		
Welsch	2/9/2025 11:42	2/9/2025 11:34	21R	T	P28A	N6919J		
Welsch	2/9/2025 11:47	2/9/2025 11:34	21R	T	P28A	N6919J		
Welsch	2/9/2025 11:53	2/9/2025 11:53	21L	D	PC12	N17DP	NMS03	70.3
Welsch	2/9/2025 11:58	2/9/2025 11:53	21L	D	PC12	N17DP	NMS03	70.3
Welsch	2/9/2025 11:59	2/9/2025 11:53	21L	D	PC12	N17DP	NMS03	70.3
Welsch	2/9/2025 12:00	2/9/2025 11:53	21L	D	PC12	N17DP	NMS03	70.3
Welsch	2/9/2025 12:04	2/9/2025 12:04	21R	T	C172	N6981H		
Welsch	2/9/2025 12:14	2/9/2025 11:47	21L	D	F2TH	N365TX		
Welsch	2/9/2025 12:20	2/9/2025 12:05	21L	D	PC12	CNS1119	NMS03	74
Welsch	2/9/2025 12:22	2/9/2025 12:23	21L	D	H25B	N125SB	NMS03	78.9
Johnson	2/9/2025 12:27	2/9/2025 12:23	34	T	R44	N1273	NMS01	68.5
Welsch	2/9/2025 12:28	2/9/2025 12:23	21L	D	H25B	N125SB	NMS03	78.9
Welsch	2/9/2025 12:36	2/9/2025 12:35	21R	D	P28A	CXK515		
Welsch	2/9/2025 12:37	2/9/2025 12:13	21R	T	C72R	N178AF		
Welsch	2/9/2025 12:43	2/9/2025 12:43	21R	D	P28R	N541HF	NMS03	72.2
Welsch	2/9/2025 12:44	2/9/2025 12:43	21R	D	P28R	N541HF	NMS03	72.2
Welsch	2/9/2025 12:49	2/9/2025 12:36	21R	T	P28R	N3231R		
Welsch	2/9/2025 12:52	2/9/2025 12:36	21R	T	P28R	N3231R		
Welsch	2/9/2025 12:57	2/9/2025 12:50	21L	D	BE20	N332CA		

Welsch	2/9/2025 12:58	2/9/2025 12:50	21L	D	BE20	N332CA		
Welsch	2/9/2025 13:00	2/9/2025 12:50	21L	D	BE20	N332CA		
Welsch	2/9/2025 13:01	2/9/2025 12:59	21L	D	CL60	TIV988		
Welsch	2/9/2025 13:03	2/9/2025 12:59	21L	D	CL60	TIV988		
Welsch	2/9/2025 13:04	2/9/2025 12:45	21R	T	C82R	N1657R		
Welsch	2/9/2025 13:05	2/9/2025 12:45	21R	T	C82R	N1657R		
Welsch	2/9/2025 13:07	2/9/2025 12:45	21R	T	C82R	N1657R		
Welsch	2/9/2025 13:08	2/9/2025 12:50	21R	T	C172	N3925Q		
Welsch	2/9/2025 13:09	2/9/2025 12:55	21L	D	C182	N3196Y	NMS03	74.4
Welsch	2/9/2025 13:09	2/9/2025 12:55	21L	D	C182	N3196Y	NMS03	74.4
Welsch	2/9/2025 13:10	2/9/2025 12:55	21L	D	C182	N3196Y	NMS03	74.4
Kempter	2/9/2025 13:13	2/9/2025 13:10	21R	D	P28A	N6919J		
Kempter	2/9/2025 13:13	2/9/2025 13:10	21R	D	P28A	N6919J		
Welsch	2/9/2025 13:13	2/9/2025 13:10	21R	D	P28A	N6919J		
Welsch	2/9/2025 13:15	2/9/2025 12:55	21R	T	C172	N73924		
Welsch	2/9/2025 13:15	2/9/2025 12:55	21R	T	C172	N73924		
Kempter	2/9/2025 13:15	2/9/2025 12:55	21R	T	C172	N73924		
Welsch	2/9/2025 13:18	2/9/2025 13:19	21R	T	P28A	N703CA		
Kempter	2/9/2025 13:18	2/9/2025 13:19	21R	T	P28A	N703CA		
Welsch	2/9/2025 13:19	2/9/2025 13:19	21R	T	P28A	N703CA		
Kempter	2/9/2025 13:19	2/9/2025 13:19	21R	T	P28A	N703CA		
Welsch	2/9/2025 13:23	2/9/2025 13:19	21R	T	P28A	N703CA		
Kempter	2/9/2025 13:23	2/9/2025 13:19	21R	T	P28A	N703CA		
Welsch	2/9/2025	2/9/2025	21L	D	GL5T	EJA109	NMS03	82.9



	13:27	13:21						
Kempter	2/9/2025 13:27	2/9/2025 13:21	21L	D	GL5T	EJA109	NMS03	82.9
Welsch	2/9/2025 13:29	2/9/2025 13:23	21L	D	GLF4	EJMB85	NMS03	79.6
Kempter	2/9/2025 13:29	2/9/2025 13:23	21L	D	GLF4	EJMB85	NMS03	79.6
Welsch	2/9/2025 13:29	2/9/2025 13:23	21L	D	GLF4	EJMB85	NMS03	79.6
Kempter	2/9/2025 13:29	2/9/2025 13:23	21L	D	GLF4	EJMB85	NMS03	79.6
Welsch	2/9/2025 13:34	2/9/2025 13:34	21R	T	C72R	N106AF		
Kempter	2/9/2025 13:34	2/9/2025 13:34	21R	T	C72R	N106AF		
Welsch	2/9/2025 13:35	2/9/2025 13:34	21R	T	C72R	N106AF		
Kempter	2/9/2025 13:35	2/9/2025 13:34	21R	T	C72R	N106AF		
Welsch	2/9/2025 13:37	2/9/2025 13:36	21R	D	P28A	CXK220		
Kempter	2/9/2025 13:37	2/9/2025 13:34	21R	T	C72R	N106AF		
Welsch	2/9/2025 13:39	2/9/2025 13:36	21R	D	P28A	CXK220		
Kempter	2/9/2025 13:40	2/9/2025 13:36	21R	D	P28A	CXK220		
Welsch	2/9/2025 13:42	2/9/2025 13:36	21R	D	P28A	CXK220		
Welsch	2/9/2025 13:44	2/9/2025 13:36	21R	D	P28A	CXK220		
Welsch	2/9/2025 13:52	2/9/2025 13:42	21L	D	P210	N55BE		
Welsch	2/9/2025 13:59	2/9/2025 13:57	21L	D	B350	VET350	NMS03	71.3
Welsch	2/9/2025 14:02	2/9/2025 13:57	21L	D	B350	VET350	NMS03	71.3
Welsch	2/9/2025 14:16	2/9/2025 14:08	21L	D	BE20	N585CE		
Welsch	2/9/2025 14:19	2/9/2025 14:13	21L	D	GLF4	VJA913	NMS03	74.6
Welsch	2/9/2025 14:23	2/9/2025 14:22	21R	T	P28A	N296CA		
Kempter	2/9/2025 14:24	2/9/2025 14:22	21R	T	P28A	N296CA		
Kempter	2/9/2025 14:24	2/9/2025 14:22	21R	T	P28A	N296CA		

Kempter	2/9/2025 14:24	2/9/2025 14:22	21R	T	P28A	N296CA		
Kempter	2/9/2025 14:24	2/9/2025 14:22	21R	T	P28A	N296CA		
Welsch	2/9/2025 14:24	2/9/2025 14:22	21R	T	P28A	N296CA		
Welsch	2/9/2025 14:25	2/9/2025 14:11	21R	D	M20P	N9686M		
Kempter	2/9/2025 14:26	2/9/2025 14:26	21R	D	P28A	N11CA		
Welsch	2/9/2025 14:26	2/9/2025 14:11	21R	D	M20P	N9686M		
Kempter	2/9/2025 14:26	2/9/2025 14:26	21R	D	P28A	N11CA		
Welsch	2/9/2025 14:29	2/9/2025 14:11	21R	D	M20P	N9686M		
Kempter	2/9/2025 14:29	2/9/2025 14:26	21R	D	P28A	N11CA		
Welsch	2/9/2025 14:32	2/9/2025 14:26	21R	D	P28A	N11CA		
Kempter	2/9/2025 14:32	2/9/2025 14:33	21R	D	P28A	N485A		
Kempter	2/9/2025 14:33	2/9/2025 14:33	21R	D	P28A	N485A		
Kempter	2/9/2025 14:34	2/9/2025 14:23	21R	D	C172	N62855		
Kempter	2/9/2025 14:37	2/9/2025 14:23	21R	D	C172	N62855		
Kempter	2/9/2025 14:39	2/9/2025 14:23	21R	D	C172	N62855		
Kempter	2/9/2025 14:44	2/9/2025 14:32	21R	D	P210	N96RH	NMS03	69.3
Kempter	2/9/2025 14:45	2/9/2025 14:32	21R	D	P210	N96RH	NMS03	69.3
Kempter	2/9/2025 14:46	2/9/2025 14:32	21R	D	P210	N96RH	NMS03	69.3
Kempter	2/9/2025 14:49	2/9/2025 14:29	21R	T	C172	N704RB		
Kempter	2/9/2025 14:59	2/9/2025 14:43	21L	D	CL35	LXJ587		
Kempter	2/9/2025 15:02	2/9/2025 14:41	21R	D	M20P	N211HK		
Kempter	2/9/2025 15:03	2/9/2025 14:41	21R	D	M20P	N211HK		
Kempter	2/9/2025 15:09	2/9/2025 14:56	21R	T	S22T	N702SR		
Welsch	2/9/2025	2/9/2025	21R	T	S22T	N702SR		

	15:09	14:56						
Paskevich	2/9/2025 15:27	2/9/2025 15:21	21L	D	CL35	EJA761		
Lowndes	2/9/2025 15:52	2/9/2025 15:55	03R	A	ASTR	N327GA		
Lowndes	2/9/2025 15:54	2/9/2025 16:01	21L	A	SF50	N21VJ		
Lowndes	2/9/2025 15:56	2/9/2025 16:03	21L	A	GLF4	N456CP		
Welsch	2/9/2025 16:26	2/9/2025 16:26	UNK	D	H25B	N125SB		
Welsch	2/9/2025 16:26	2/9/2025 16:26	UNK	D	H25B	N125SB		
Welsch	2/9/2025 16:31	2/9/2025 16:17	21R	T	SR20	N622BW	NMS03	78.3
Welsch	2/9/2025 16:32	2/9/2025 16:17	21R	T	SR20	N622BW	NMS03	78.3
Welsch	2/9/2025 16:36	2/9/2025 16:17	21R	T	SR20	N622BW	NMS03	78.3
Welsch	2/9/2025 16:41	2/9/2025 16:43	21R	D	C172	N62855	NMS03	66.6
Welsch	2/9/2025 16:43	2/9/2025 16:43	21R	D	C172	N62855	NMS03	66.6
Welsch	2/9/2025 16:44	2/9/2025 16:43	21R	D	C172	N62855	NMS03	66.6
Welsch	2/9/2025 16:46	2/9/2025 16:34	21L	D	P208	N4548T	NMS03	66.8
Welsch	2/9/2025 16:48	2/9/2025 16:34	21L	D	P208	N4548T	NMS03	66.8
Welsch	2/9/2025 16:49	2/9/2025 16:34	21L	D	P208	N4548T	NMS03	66.8
Welsch	2/9/2025 16:55	2/9/2025 16:59	21L	D	F2TH	N49HT	NMS03	82.7
Lowndes	2/9/2025 16:56	2/9/2025 17:03	21L	A	C56X	N100CJ		
Welsch	2/9/2025 17:05	2/9/2025 17:01	21L	D	BE20	N538RM		
Welsch	2/9/2025 17:07	2/9/2025 17:01	21L	D	BE20	N538RM		
Welsch	2/9/2025 17:08	2/9/2025 17:01	21L	D	BE20	N538RM		
Lowndes	2/9/2025 17:08	2/9/2025 17:15	21L	A	BE36	N217TW		
Welsch	2/9/2025 17:10	2/9/2025 17:01	21L	D	BE20	N538RM		
Welsch	2/9/2025 17:15	2/9/2025 17:06	21L	D	C182	N4468N	NMS03	73.2

Johnson	2/9/2025 17:15	2/9/2025 17:15	21L	A	BE36	N217TW	NMS01	83.4
Welsch	2/9/2025 17:19	2/9/2025 17:13	21L	D	BE40	N401RL		
Welsch	2/9/2025 17:24	2/9/2025 17:16	21L	T	S22T	N687CW	NMS03	82.8
Welsch	2/9/2025 17:28	2/9/2025 17:16	21L	T	S22T	N687CW	NMS03	82.8
Welsch	2/9/2025 17:29	2/9/2025 17:29	21R	T	P28A	N598A		
Welsch	2/9/2025 17:32	2/9/2025 17:31	21R	T	P28A	N11CA		
Kempter	2/9/2025 17:32	2/9/2025 17:31	21R	T	P28A	N11CA		
Welsch	2/9/2025 17:37	2/9/2025 17:31	21R	T	P28A	N11CA		
Welsch	2/9/2025 17:47	2/9/2025 17:44	21R	T	C172	N73924		
Welsch	2/9/2025 17:48	2/9/2025 17:44	21R	T	C172	N73924		
Kempter	2/9/2025 17:50	2/9/2025 17:29	21R	T	C172	N704RB		
Welsch	2/9/2025 17:50	2/9/2025 17:44	21R	T	C172	N73924		
Welsch	2/9/2025 17:55	2/9/2025 17:48	21L	D	BE20	N25WC	NMS03	67
Lowndes	2/9/2025 18:17	2/9/2025 18:09	UNK	O	EC30	N780GS		
Welsch	2/9/2025 18:33	2/9/2025 18:30	UNK	O	EC35	N883AE	NMS03	67.3
Welsch	2/9/2025 18:40	2/9/2025 18:27	21R	T	P28A	N84400		
Welsch	2/9/2025 18:46	2/9/2025 18:46	21R	D	P28A	N296CA		
Welsch	2/9/2025 18:47	2/9/2025 18:46	21R	D	P28A	N296CA		
Welsch	2/9/2025 18:48	2/9/2025 18:46	21R	D	P28A	N296CA		
Kempter	2/9/2025 18:48	2/9/2025 18:46	21R	D	P28A	N296CA		
Kempter	2/9/2025 18:51	2/9/2025 18:47	21R	D	P28A	N11CA		
Kempter	2/9/2025 18:57	2/9/2025 18:47	21R	D	P28A	N11CA		
Welsch	2/9/2025 18:58	2/9/2025 18:47	21R	D	P28A	N11CA		
Kempter	2/9/2025	2/9/2025	21R	D	P28A	N11CA		

	19:01	18:47						
Welsch	2/9/2025 19:02	2/9/2025 18:47	21R	D	P28A	N11CA		
Welsch	2/9/2025 19:06	2/9/2025 18:47	21R	D	P28A	N11CA		
Feldman	2/9/2025 19:15	2/9/2025 19:11	21L	D	GLF5	N208VA		
Welsch	2/9/2025 19:15	2/9/2025 19:11	21L	D	GLF5	N208VA	NMS03	80
Welsch	2/9/2025 19:16	2/9/2025 19:11	21L	D	GLF5	N208VA	NMS03	80
Kempter	2/9/2025 19:31	2/9/2025 19:25	21L	D	CL60	N650LC	NMS03	75.2
Welsch	2/9/2025 19:31	2/9/2025 19:25	21L	D	CL60	N650LC	NMS03	75.2
Kempter	2/9/2025 19:37	2/9/2025 19:27	21R	D	C172	N704RB		
Welsch	2/9/2025 19:38	2/9/2025 19:25	21L	D	CL60	N650LC	NMS03	75.2
Welsch	2/9/2025 19:42	2/9/2025 19:25	21L	D	CL60	N650LC	NMS03	75.2
Kempter	2/9/2025 19:42	2/9/2025 19:43	21R	D	P28A	N11CA	NMS03	68.3
Welsch	2/9/2025 19:44	2/9/2025 19:43	21R	D	P28A	N11CA	NMS03	68.3
Kempter	2/9/2025 19:44	2/9/2025 19:43	21R	D	P28A	N11CA	NMS03	68.3
Welsch	2/9/2025 19:47	2/9/2025 19:43	21R	D	P28A	N11CA	NMS03	68.3
Welsch	2/9/2025 19:52	2/9/2025 19:43	21R	D	P28A	N11CA	NMS03	68.3
Welsch	2/9/2025 19:53	2/9/2025 19:43	21R	D	P28A	N11CA	NMS03	68.3
Welsch	2/9/2025 19:56	2/9/2025 19:43	21R	D	P28A	N11CA	NMS03	68.3
Welsch	2/9/2025 20:00	2/9/2025 20:01	21R	D	P28A	N11CA	NMS03	69
Welsch	2/9/2025 20:02	2/9/2025 20:01	21R	D	P28A	N11CA	NMS03	69
Welsch	2/9/2025 20:05	2/9/2025 20:01	21R	D	P28A	N11CA	NMS03	69
Welsch	2/9/2025 20:09	2/9/2025 20:01	21R	D	P28A	N11CA	NMS03	69
Kempter	2/9/2025 20:14	2/9/2025 20:01	21R	D	P28A	N11CA	NMS03	69
Welsch	2/9/2025 20:14	2/9/2025 20:01	21R	D	P28A	N11CA	NMS03	69

Welsch	2/9/2025 20:18	2/9/2025 20:01	21R	D	P28A	N11CA	NMS03	69
Kempter	2/9/2025 20:19	2/9/2025 20:01	21R	D	P28A	N11CA	NMS03	69
Welsch	2/9/2025 20:23	2/9/2025 20:01	21R	D	P28A	N11CA	NMS03	69
Kempter	2/9/2025 20:23	2/9/2025 20:01	21R	D	P28A	N11CA	NMS03	69
Welsch	2/9/2025 20:28	2/9/2025 20:39	03L	D	P28A	N11CA		
Paskevich	2/9/2025 21:01	2/9/2025 21:08	03R	A	G280	N270PC		
Welsch	2/9/2025 21:09	2/9/2025 21:19	21L	A	H25B	N125SB		
Domis	2/10/2025 1:48							
Feldman	2/10/2025 2:27	2/10/2025 2:21	UNK	A	C208	N414CY		
Welsch	2/10/2025 3:02	2/10/2025 2:57	03R	D	GLF4	JAS59		
Welsch	2/10/2025 3:19	2/10/2025 3:14	21L	D	C208	N414CY	NMS03	75.2
Dykewicz	2/10/2025 3:19	2/10/2025 3:14	21L	D	C208	N414CY	NMS04	69.3
Lowndes	2/10/2025 6:11	2/10/2025 6:02	03L	D	G280	N268PC		
Feldman	2/10/2025 8:31	2/10/2025 8:24	03R	D	CL30	N330SA		
Johnson	2/10/2025 10:15	2/10/2025 9:57	03L	T	BE36	N94EM		
Johnson	2/10/2025 11:44	2/10/2025 11:57	03L	A	C172	N404DC		
Paskevich	2/10/2025 14:49	2/10/2025 14:56	03R	A	C56X	JIL318		
McKay	2/10/2025 15:23	2/10/2025 15:25	UNK	A	EC45	N445CH		
Feldman	2/10/2025 15:59	2/10/2025 15:58	34	T	R66	N4488H		
Welsch	2/10/2025 17:03	2/10/2025 17:07	03R	T	PA32	N4176X		
Paskevich	2/10/2025 17:06	2/10/2025 17:03	03R	A	G280	N284PC		
Lowndes	2/10/2025 18:20	2/10/2025 18:06	UNK	O	PA32	N32303		
McSwanson	2/10/2025 18:21	2/10/2025 18:28	UNK	D	R44	N543BZ		
Paskevich	2/10/2025	2/10/2025	03R	A	C68A	EJA559		

	18:48	19:07						
Welsch	2/10/2025 19:02	2/10/2025 19:06	03R	A	BE20	N332CA	NMS03	69.4
Kempter	2/10/2025 19:29	2/10/2025 19:28	21R	D	C172	N62855		
Welsch	2/10/2025 19:29	2/10/2025 19:25	21L	D	BE20	N332CA	NMS03	71
Kempter	2/10/2025 19:30	2/10/2025 19:28	21R	D	C172	N62855		
Welsch	2/10/2025 19:37	2/10/2025 19:25	21L	D	BE20	N332CA	NMS03	71
Feldman	2/10/2025 19:37	2/10/2025 19:13	UNK	D	GL5T	EJA129		
Welsch	2/10/2025 19:57	2/10/2025 19:56	21R	D	P28A	N703CA		
Kempter	2/10/2025 20:06	2/10/2025 20:13	UNK	A	E545	N794BC		
Welsch	2/10/2025 20:06	2/10/2025 20:13	UNK	A	E545	N794BC		
Welsch	2/10/2025 20:08	2/10/2025 20:13	UNK	A	E545	N794BC		
Kempter	2/10/2025 20:08	2/10/2025 20:08	21R	D	P28A	N6919J		
Welsch	2/10/2025 20:14	2/10/2025 20:01	21R	D	P28A	N1205T		
Kempter	2/10/2025 20:18	2/10/2025 20:17	21R	D	P28A	N296CA		
Welsch	2/10/2025 20:18	2/10/2025 20:17	21R	D	P28A	N296CA		
Feldman	2/10/2025 20:20	2/10/2025 20:24	21L	A	SR20	N362BZ		
Kempter	2/10/2025 20:23	2/10/2025 20:31	UNK	A	GA6C	N660DX	NMS03	71.6
Welsch	2/10/2025 20:24	2/10/2025 20:31	UNK	A	GA6C	N660DX	NMS03	71.6
Welsch	2/10/2025 20:25	2/10/2025 20:31	UNK	A	GA6C	N660DX	NMS03	71.6
Feldman	2/10/2025 20:38	2/10/2025 20:38	21L	D	C25A	N420EH		
Welsch	2/10/2025 20:39	2/10/2025 20:38	21L	D	C25A	N420EH	NMS03	83.6
Fox	2/10/2025 20:39	2/10/2025 20:38	21L	D	C25A	N420EH	NMS03	83.6
Fibus	2/10/2025 20:40	2/10/2025 20:38	21L	D	C25A	N420EH		
Welsch	2/10/2025 20:58	2/10/2025 20:29	21R	T	S22T	N216HB		

Kempter	2/10/2025 20:58	2/10/2025 20:29	21R	T	S22T	N216HB		
Lowndes	2/10/2025 23:07	2/10/2025 23:01	8R	D	CRJ9	N805SK		
Lowndes	2/10/2025 23:10	2/10/2025 23:01	8R	D	CRJ9	N805SK		
Lowndes	2/10/2025 23:12	2/10/2025 23:01	8R	D	CRJ9	N805SK		
Kempter	2/11/2025 1:25	2/11/2025 1:19	21L	D	PC12	SKQ31		
Welsch	2/11/2025 1:26	2/11/2025 1:19	21L	D	PC12	SKQ31		
Welsch	2/11/2025 2:48	2/11/2025 2:47	21L	D	C208	N414CY	NMS03	73.5
Feldman	2/12/2025 6:55	2/12/2025 6:44	21L	D	GL7T	N810KJ		
Feldman	2/12/2025 7:40	2/12/2025 7:26	21L	D	H25B	N125SB		
Paskevich	2/12/2025 13:14	2/12/2025 13:08	21L	D	CL30	EJA706		
Johnson	2/13/2025 13:01	2/13/2025 12:33	34	D	P32R	N19PE		
Johnson	2/13/2025 13:02	2/13/2025 12:45	34	D	P28A	N743DS	NMS01	72
Johnson	2/13/2025 13:16	2/13/2025 13:17	03R	A	BE40	N400KP		
Paskevich	2/13/2025 13:18	2/13/2025 13:24	03R	A	C560	N608BC		
Johnson	2/13/2025 13:20	2/13/2025 13:16	UNK	D	R44	N543BZ		
Paskevich	2/13/2025 13:20	2/13/2025 13:49	03R	A	C68A	EJA677		
Johnson	2/13/2025 13:33	2/13/2025 13:15	34	D	C172	N6981H	NMS01	72
Johnson	2/13/2025 13:33	2/13/2025 13:15	34	D	C172	N6981H	NMS01	72
Johnson	2/13/2025 13:33	2/13/2025 13:15	34	D	C172	N6981H	NMS01	72
Johnson	2/13/2025 13:37	2/13/2025 13:10	34	D	C172	N623KW	NMS01	71.7
Johnson	2/13/2025 13:38	2/13/2025 13:10	34	D	C172	N623KW	NMS01	71.7
Paskevich	2/13/2025 13:51	2/13/2025 13:41	UNK	O	CL30	N700BC		
Johnson	2/13/2025 13:57	2/13/2025 13:40	34	D	BE24	N18841		
Yates	2/13/2025	2/13/2025	UNK	A	BK17	N117CH		



	16:36	16:37						
Feldman	2/13/2025 19:52	2/13/2025 19:28	UNK	O	SR20	N385GT		
Feldman	2/13/2025 20:59	2/13/2025 20:56	03R	D	C700	EJA818		
Fox	2/13/2025 21:10	2/13/2025 21:12	03R	A	P28R	N541HF		
Feldman	2/13/2025 21:10	2/13/2025 21:04	03R	D	GA6C	N660DX		
Lowndes	2/13/2025 22:57	2/13/2025 22:43	UNK	O	BE35	N4509D		
Feldman	2/13/2025 23:28	2/13/2025 23:57	03R	A	H25B	N125SB		
Welsch	2/14/2025 1:51	2/14/2025 1:50	21R	D	B06	N355AE		
Welsch	2/14/2025 2:54	2/14/2025 2:46	21L	D	C208	N414CY		
Welsch	2/14/2025 3:18	2/14/2025 3:19	03R	A	C560	PXG691		
Welsch	2/14/2025 3:21	2/14/2025 3:24	03R	A	PC12	SKQ31		
Tabbara	2/14/2025 9:29	2/14/2025 9:31	UNK	D	SR20	N490CD		
Paskevich	2/14/2025 10:43	2/14/2025 10:46	03R	A	G280	N268PC		
Paskevich	2/14/2025 10:46	2/14/2025 10:56	03R	A	F900	NSH454		
Lowndes	2/14/2025 11:41	2/14/2025 11:34	UNK	O	EC30	N325AM		
Lowndes	2/14/2025 11:50	2/14/2025 11:32	03R	T	M20P	N5687U		
Feldman	2/14/2025 12:04	2/14/2025 12:02	UNK	T	S76	N98PC		
Lowndes	2/14/2025 12:05	2/14/2025 11:39	03R	D	SF50	N325JB		
Paskevich	2/14/2025 12:14	2/14/2025 12:22	03R	A	SR22	N553LB		
Lowndes	2/14/2025 13:54	2/14/2025 13:45	03R	D	FA7X	N138B		
Lowndes	2/14/2025 13:56	2/14/2025 13:47	03R	D	PC12	N108JC		
Lowndes	2/14/2025 14:03	2/14/2025 13:52	03L	T	BE35	N5HK		
Lowndes	2/14/2025 14:09	2/14/2025 14:03	03R	D	C680	EJA324		
Lowndes	2/14/2025 14:24	2/14/2025 14:08	03R	D	S22T	N660MK		

Lowndes	2/14/2025 14:35	2/14/2025 14:22	03R	D	CL30	KOW883		
Lowndes	2/14/2025 15:46	2/14/2025 15:38	03R	D	C525	N525XP		
Townsend	2/14/2025 15:53	2/14/2025 15:59	03R	A	CL35	EJA757		
Lowndes	2/14/2025 16:30	2/14/2025 16:19	03L	T	BE33	N3827Q		
Schneeborg	2/14/2025 16:47	2/14/2025 16:39	UNK	D	EC45	N445CH		
Lowndes	2/14/2025 16:55	2/14/2025 16:48	03R	D	PC12	N717NC		
Lowndes	2/14/2025 17:58	2/14/2025 18:03	UNK	A	C68A	EJA621		
Lowndes	2/14/2025 18:04	2/14/2025 18:03	UNK	A	C68A	EJA621		
Lowndes	2/14/2025 18:08	2/14/2025 18:20	03R	T	BE20	N500HG		
Lowndes	2/14/2025 18:16	2/14/2025 18:20	03R	T	BE20	N500HG		
Lowndes	2/14/2025 19:09	2/14/2025 18:51	UNK	O	C172	N8911V		
Lowndes	2/14/2025 19:10	2/14/2025 18:51	UNK	O	C172	N8911V		
Lowndes	2/14/2025 20:24	2/14/2025 20:29	03R	D	GLF4	N998GP		
Welsch	2/14/2025 20:25	2/14/2025 20:23	21R	T	B06	N355AE		
Lowndes	2/14/2025 20:39	2/14/2025 20:29	03R	D	GLF4	N998GP		
Lowndes	2/14/2025 21:10	2/14/2025 20:55	8R	D	B739	N837DN		
Hoffman	2/14/2025 21:45	2/14/2025 21:21	03L	T	R66	N822PW		
Tabbara	2/14/2025 22:12	2/14/2025 22:08	03L	D	R66	N4488H		
Feldman	2/14/2025 23:19	2/14/2025 23:26	03R	A	GALX	N445ST		
Paskevich	2/15/2025 10:40	2/15/2025 10:28	21L	D	CL35	N755QS		
Lowndes	2/15/2025 12:22	2/15/2025 12:30	21L	A	C525	N727SB		
Feldman	2/15/2025 23:06	2/15/2025 23:01	8R	D	B738	N774DE		
Lowndes	2/16/2025 0:39	2/16/2025 0:29	UNK	O	C208	N414CY		
Lowndes	2/16/2025							

	13:44							
Feldman	2/16/2025 14:33	2/16/2025 14:47	21L	A	GLF4	N998GP		
Feldman	2/16/2025 14:59	2/16/2025 15:27	21L	A	GLF5	N306BD		
Lowndes	2/16/2025 15:53	2/16/2025 16:02	21L	A	PC12	N555PH		
Paskevich	2/16/2025 16:29	2/16/2025 16:33	03R	A	C25B	JIZ287		
Paskevich	2/16/2025 16:31	2/16/2025 16:33	03R	A	C25B	JIZ287		
Feldman	2/16/2025 16:34	2/16/2025 16:07	UNK	T	R44	N523CT		
Lowndes	2/16/2025 16:46	2/16/2025 16:37	03R	D	G150	N922LR		
Paskevich	2/16/2025 16:51	2/16/2025 16:54	03R	A	GLF4	N830GR		
Lowndes	2/16/2025 16:57	2/16/2025 16:41	03R	D	GLEX	EJM42		
Lowndes	2/16/2025 17:25	2/16/2025 16:55	03R	D	H25B	N58DH		
Paskevich	2/16/2025 18:13	2/16/2025 18:17	21L	A	G280	N280RR		
Feldman	2/16/2025 18:44	2/16/2025 18:49	03R	A	E55P	EJA472		
Feldman	2/16/2025 19:25	2/16/2025 19:11	03R	D	C560	N44LV		
Paskevich	2/16/2025 19:34	2/16/2025 19:24	UNK	O	C68A	EJA603		
Feldman	2/17/2025 3:59	2/17/2025 3:48	03R	D	B350	JIL350		
Feldman	2/17/2025 4:01	2/17/2025 3:48	03R	D	B350	JIL350		
Feldman	2/17/2025 4:03	2/17/2025 3:48	03R	D	B350	JIL350		
Feldman	2/17/2025 7:05	2/17/2025 6:43	03R	D	C25B	JRE751		
Havard	2/17/2025 8:24	2/17/2025 8:09	UNK	O	B407	N921SP		
Paskevich	2/17/2025 9:13	2/17/2025 9:22	03R	A	PC12	N786FR		
Townsend	2/17/2025 9:25	2/17/2025 9:29	03R	A	GA6C	N1911W		
Paskevich	2/17/2025 9:27	2/17/2025 9:29	03R	A	GA6C	N1911W		
Paskevich	2/17/2025 9:33	2/17/2025 9:37	21L	A	G150	N100GX		

Paskevich	2/17/2025 12:52	2/17/2025 13:08	03R	A	BE40	N33BL		
Lowndes	2/17/2025 17:40	2/17/2025 17:21	03R	D	C25B	N110RF		
Lowndes	2/17/2025 17:47	2/17/2025 17:22	03L	D	PIAT	N227AT		
Feldman	2/17/2025 19:17	2/17/2025 18:59	21L	D	BE40	N400FF		
Kempter	2/17/2025 20:08	2/17/2025 19:56	21R	T	P28A	N9405J		
Kempter	2/17/2025 20:09	2/17/2025 19:56	21R	T	P28A	N9405J		
Kempter	2/17/2025 20:09	2/17/2025 19:56	21R	T	P28A	N9405J		
Kempter	2/17/2025 20:18	2/17/2025 20:00	21L	D	SF50	N858AF		
Kempter	2/17/2025 21:07	2/17/2025 21:00	21L	D	BE9L	N6190S		
Kempter	2/17/2025 21:08	2/17/2025 21:00	21L	D	BE9L	N6190S		
Kempter	2/17/2025 21:08	2/17/2025 21:00	21L	D	BE9L	N6190S		
Kempter	2/17/2025 21:08	2/17/2025 21:00	21L	D	BE9L	N6190S		
Kempter	2/17/2025 21:09	2/17/2025 21:00	21L	D	BE9L	N6190S		
Kempter	2/17/2025 21:14	2/17/2025 20:58	21R	D	P28A	N11CA		
Kempter	2/17/2025 22:21	2/17/2025 22:13	21L	D	PC12	SKQ31		
Kempter	2/17/2025 22:37	2/17/2025 22:28	21R	D	C172	N178GW		
Feldman	2/18/2025 0:29	2/18/2025 0:15	03R	D	C56X	N560LX		
Feldman	2/18/2025 2:05	2/18/2025 2:01	03L	D	EC30	N332AM		
Lowndes	2/18/2025 6:27	2/18/2025 6:21	03R	T	P28A	N703CA		
Welsch	2/18/2025 8:01	2/18/2025 8:09	03R	A	LJ60	N30GJ		
Welsch	2/18/2025 8:08	2/18/2025 8:09	03R	A	LJ60	N30GJ		
Welsch	2/18/2025 9:20	2/18/2025 9:24	03R	A	BE58	N158MS		
Paskevich	2/18/2025 10:29	2/18/2025 10:21	UNK	O	CL60	N604LA		
Paskevich	2/18/2025	2/18/2025	03R	A	E55P	LX391		

	10:47	11:07						
Feldman	2/18/2025 10:54	2/18/2025 10:24	03R	D	LJ31	N412SW		
Lowndes	2/18/2025 17:38	2/18/2025 17:51	03R	A	M20P	N2674W		
Paskevich	2/18/2025 19:19	2/18/2025 19:44	03R	A	E55P	JIL505		
Welsch	2/18/2025 21:32	2/18/2025 21:21	21R	D	C172	N585RD		
Welsch	2/18/2025 22:11	2/18/2025 22:10	21L	D	BE30	N327R		
Welsch	2/18/2025 22:11	2/18/2025 22:10	21L	D	BE30	N327R		
Lowndes	2/18/2025 22:20	2/18/2025 22:11	UNK	O	B06	N486AE		
Spatafora	2/18/2025 22:20	2/18/2025 22:11	UNK	O	B06	N486AE		
Edwards	2/18/2025 22:40	2/18/2025 22:47	21L	A	GLF4	JAS59		
Feldman	2/18/2025 23:31	2/18/2025 23:26	8R	D	B739	N875DN		
Cone	2/19/2025 0:08	2/19/2025 0:04	21L	D	C172	N858VK		
Feldman	2/19/2025 3:52	2/19/2025 3:46	UNK	O	EC45	N893AU		
Gerondelis	2/19/2025 4:27	2/19/2025 4:32	03R	A	BE20	N28VU		
Johnson	2/19/2025 8:44	2/19/2025 8:38	03R	D	SR22	N553LB	NMS01	71.5
Feldman	2/19/2025 19:43	2/19/2025 19:53	21L	A	C700	EJA858		
Feldman	2/19/2025 22:34	2/19/2025 22:28	21L	D	C25B	N80EA		
Feldman	2/19/2025 23:03	2/19/2025 23:06	21L	A	C560	N577XW		
Feldman	2/20/2025 10:31	2/20/2025 10:59	21L	A	GLF4	N63ES		
Paskevich	2/20/2025 13:07	2/20/2025 13:14	03R	A	C56X	N818BL		
Paskevich	2/20/2025 13:31	2/20/2025 13:37	03R	A	C750	KOW954		
Paskevich	2/20/2025 13:42	2/20/2025 13:44	03R	A	C56X	VJA296		
Paskevich	2/20/2025 13:49	2/20/2025 14:00	34	A	T206	N527DM		
Paskevich	2/20/2025 13:49	2/20/2025 14:00	34	A	T206	N527DM		

Paskevich	2/20/2025 14:59	2/20/2025 15:04	03R	A	CRJ2	N719AV		
Paskevich	2/20/2025 15:06	2/20/2025 14:56	UNK	O	GLF5	N526SD		
Paskevich	2/20/2025 17:08	2/20/2025 16:58	UNK	O	C68A	N681K		
Lowndes	2/20/2025 17:29	2/20/2025 17:20	34	D	SR22	N553LB		
Lowndes	2/20/2025 22:45	2/20/2025 22:35	03R	D	PC12	SKQ31		
Lowndes	2/20/2025 22:46	2/20/2025 22:35	03R	D	PC12	SKQ31		
Feldman	2/20/2025 23:22	2/20/2025 23:12	03R	D	SR22	N131EA		
Welsch	2/21/2025 3:00	2/21/2025 3:03	03R	A	C208	N414CY		
Welsch	2/21/2025 3:30	2/21/2025 3:29	21L	D	C208	N414CY		
Feldman	2/21/2025 4:13	2/21/2025 4:02	03R	D	PC12	SKQ31		
Welsch	2/21/2025 4:55	2/21/2025 4:25	03R	D	E55P	EJA478		
Welsch	2/21/2025 4:57	2/21/2025 4:52	03R	D	LJ31	N1932K		
Welsch	2/21/2025 4:58	2/21/2025 4:52	03R	D	LJ31	N1932K		
Feldman	2/21/2025 5:22	2/21/2025 5:11	03R	D	S22T	N221CL		
Lowndes	2/21/2025 13:19	2/21/2025 13:08	03R	D	CL35	LX506		
Lowndes	2/21/2025 13:28	2/21/2025 13:39	03L	A	RV7	N410S		
Lowndes	2/21/2025 13:34	2/21/2025 13:39	03L	A	RV7	N410S		
Lowndes	2/21/2025 13:42	2/21/2025 13:39	03L	A	RV7	N410S		
Schneeberg	2/21/2025 14:47	2/21/2025 14:32	UNK	D	R44	N523CT		
Paskevich	2/21/2025 15:09	2/21/2025 15:15	03R	A	C560	N978MA		
Lowndes	2/21/2025 20:18	2/21/2025 20:08	UNK	O	PC12	LBQ840		
Lowndes	2/21/2025 20:30	2/21/2025 20:40	21R	A	P28A	N2551U		
Lowndes	2/21/2025 20:32	2/21/2025 20:40	21R	A	P28A	N2551U		
Feldman	2/21/2025	2/21/2025	03R	D	C560	PXG691		

	22:42	22:34						
Feldman	2/21/2025 23:12	2/21/2025 23:35	21R	A	R44	N523CT		
Paskevich	2/22/2025 9:30	2/22/2025 9:36	03R	A	PRMI	N273KT		
Lowndes	2/22/2025 9:32	2/22/2025 9:24	03R	T	C172	N62855		
Lowndes	2/22/2025 10:36	2/22/2025 10:23	03R	D	PC12	N525AA		
Lowndes	2/22/2025 10:50	2/22/2025 10:39	UNK	O	BE35	N7301B		
Lowndes	2/22/2025 11:51	2/22/2025 11:41	03R	D	BE58	N491WM		
Welsch	2/22/2025 14:34	2/22/2025 14:06	21L	D	C68A	EJA951		
Welsch	2/22/2025 14:38	2/22/2025 14:29	21L	T	C72R	CAP923		
Welsch	2/22/2025 14:43	2/22/2025 14:45	21R	T	P28A	N11CA		
Welsch	2/22/2025 15:07	2/22/2025 14:50	21R	T	C172	N404DC		
Welsch	2/22/2025 15:09	2/22/2025 14:50	21R	T	C172	N404DC		
Welsch	2/22/2025 15:14	2/22/2025 15:18	21R	T	C172	A68C68		
Welsch	2/22/2025 15:16	2/22/2025 15:18	21R	T	C172	A68C68		
Welsch	2/22/2025 15:18	2/22/2025 15:18	21R	T	C172	A68C68		
Welsch	2/22/2025 15:19	2/22/2025 15:18	21R	T	C172	A68C68		
Welsch	2/22/2025 15:21	2/22/2025 14:57	21R	T	C172	N19646		
Welsch	2/22/2025 15:22	2/22/2025 14:57	21R	T	C172	N19646		
Welsch	2/22/2025 15:27	2/22/2025 14:57	21R	T	C172	N19646		
Welsch	2/22/2025 15:37	2/22/2025 15:46	UNK	A	C68A	EJA570		
Welsch	2/22/2025 15:41	2/22/2025 15:46	UNK	A	C68A	EJA570		
Welsch	2/22/2025 15:41	2/22/2025 15:46	UNK	A	C68A	EJA570		
Welsch	2/22/2025 15:47	2/22/2025 15:35	21R	T	PIAT	N227AT		
Welsch	2/22/2025 15:49	2/22/2025 15:35	21R	T	PIAT	N227AT		

Welsch	2/22/2025 15:51	2/22/2025 15:35	21R	T	PIAT	N227AT		
Welsch	2/22/2025 15:56	2/22/2025 15:35	21R	T	PIAT	N227AT		
Welsch	2/22/2025 16:02	2/22/2025 16:02	21R	T	C172	N62855		
Welsch	2/22/2025 16:03	2/22/2025 16:02	21R	T	C172	N62855		
Welsch	2/22/2025 16:06	2/22/2025 16:02	21R	T	C172	N62855		
Welsch	2/22/2025 16:08	2/22/2025 16:02	21R	T	C172	N62855		
Welsch	2/22/2025 16:14	2/22/2025 16:15	21R	T	P28A	N11CA		
Welsch	2/22/2025 16:15	2/22/2025 16:15	21R	T	P28A	N11CA		
Welsch	2/22/2025 16:16	2/22/2025 16:15	21R	T	P28A	N11CA		
Welsch	2/22/2025 16:18	2/22/2025 16:05	21R	D	C82T	N2247T		
Welsch	2/22/2025 16:19	2/22/2025 16:05	21R	D	C82T	N2247T		
Welsch	2/22/2025 16:22	2/22/2025 16:05	21R	D	C82T	N2247T		
Welsch	2/22/2025 16:23	2/22/2025 16:05	21R	D	C82T	N2247T		
Welsch	2/22/2025 16:25	2/22/2025 16:25	21L	T	P28A	N296CA		
Welsch	2/22/2025 16:26	2/22/2025 16:25	21L	T	P28A	N296CA		
Welsch	2/22/2025 16:26	2/22/2025 16:25	21L	T	P28A	N296CA		
Welsch	2/22/2025 16:29	2/22/2025 16:25	21L	T	P28A	N296CA		
Welsch	2/22/2025 16:30	2/22/2025 16:25	21L	T	P28A	N296CA		
Welsch	2/22/2025 16:30	2/22/2025 16:25	21L	T	P28A	N296CA		
Welsch	2/22/2025 16:34	2/22/2025 16:25	21L	T	P28A	N296CA		
Welsch	2/22/2025 16:36	2/22/2025 16:32	21L	D	C25B	N360TD		
Welsch	2/22/2025 16:37	2/22/2025 16:32	21L	D	C25B	N360TD		
Welsch	2/22/2025 16:40	2/22/2025 16:32	21L	D	C25B	N360TD		
Welsch	2/22/2025	2/22/2025	21L	D	C25B	N360TD		



	16:42	16:32						
Welsch	2/22/2025 16:43	2/22/2025 16:32	21L	D	C25B	N360TD		
Welsch	2/22/2025 16:44	2/22/2025 16:32	21L	D	C25B	N360TD		
Welsch	2/22/2025 16:45	2/22/2025 16:39	21R	D	C172	N6981H		
Welsch	2/22/2025 16:47	2/22/2025 16:39	21R	D	C172	N6981H		
Welsch	2/22/2025 16:48	2/22/2025 16:39	21R	D	C172	N6981H		
Welsch	2/22/2025 16:51	2/22/2025 16:50	21R	T	P28A	N703CA		
Welsch	2/22/2025 16:51	2/22/2025 16:50	21R	T	P28A	N703CA		
Welsch	2/22/2025 16:52	2/22/2025 16:50	21R	T	P28A	N703CA		
Welsch	2/22/2025 16:53	2/22/2025 16:50	21R	T	P28A	N703CA		
Welsch	2/22/2025 16:54	2/22/2025 16:50	21R	T	P28A	N703CA		
Welsch	2/22/2025 16:57	2/22/2025 16:50	21R	T	P28A	N703CA		
Welsch	2/22/2025 16:58	2/22/2025 16:57	21L	D	C56X	N100YB		
Welsch	2/22/2025 16:59	2/22/2025 16:57	21L	D	C56X	N100YB		
Welsch	2/22/2025 17:00	2/22/2025 16:57	21L	D	C56X	N100YB		
Welsch	2/22/2025 17:03	2/22/2025 16:57	21L	D	C56X	N100YB		
Welsch	2/22/2025 17:05	2/22/2025 16:57	21L	D	C56X	N100YB		
Welsch	2/22/2025 17:07	2/22/2025 16:57	21L	D	C56X	N100YB		
Welsch	2/22/2025 17:09	2/22/2025 17:05	21L	D	S22T	N231AB		
Welsch	2/22/2025 17:13	2/22/2025 17:05	21L	D	S22T	N231AB		
Welsch	2/22/2025 17:14	2/22/2025 17:05	21L	D	S22T	N231AB		
Welsch	2/22/2025 17:15	2/22/2025 17:05	21L	D	S22T	N231AB		
Welsch	2/22/2025 17:17	2/22/2025 17:05	21L	D	S22T	N231AB		
Welsch	2/22/2025 17:19	2/22/2025 17:05	21L	D	S22T	N231AB		

Welsch	2/22/2025 17:21	2/22/2025 17:03	21R	D	C172	N2108L		
Welsch	2/22/2025 17:22	2/22/2025 17:03	21R	D	C172	N2108L		
Welsch	2/22/2025 17:24	2/22/2025 17:03	21R	D	C172	N2108L		
Welsch	2/22/2025 17:26	2/22/2025 17:17	21R	T	C172	N19646		
Welsch	2/22/2025 17:28	2/22/2025 17:17	21R	T	C172	N19646		
Welsch	2/22/2025 17:29	2/22/2025 17:17	21R	T	C172	N19646		
Welsch	2/22/2025 17:31	2/22/2025 17:13	21R	T	P28A	N2551U		
Welsch	2/22/2025 17:32	2/22/2025 17:13	21R	T	P28A	N2551U		
Welsch	2/22/2025 17:35	2/22/2025 17:13	21R	T	P28A	N2551U		
Welsch	2/22/2025 17:37	2/22/2025 17:36	21R	D	C172	N62855		
Welsch	2/22/2025 17:40	2/22/2025 17:36	21R	D	C172	N62855		
Welsch	2/22/2025 17:42	2/22/2025 17:41	21R	T	P28A	N296CA		
Welsch	2/22/2025 17:48	2/22/2025 17:39	21R	D	C172	N6981H		
Welsch	2/22/2025 17:49	2/22/2025 17:39	21R	D	C172	N6981H		
Welsch	2/22/2025 17:52	2/22/2025 17:39	21R	D	C172	N6981H		
Welsch	2/22/2025 17:57	2/22/2025 17:50	21L	D	C25A	OLV915		
Welsch	2/22/2025 18:08	2/22/2025 17:57	21L	T	P208	N4548T		
Welsch	2/22/2025 18:08	2/22/2025 17:57	21L	T	P208	N4548T		
Welsch	2/22/2025 18:15	2/22/2025 17:57	21L	T	P208	N4548T		
Welsch	2/22/2025 19:12	2/22/2025 19:11	21R	D	P28A	N6919J		
Welsch	2/22/2025 19:16	2/22/2025 19:15	21L	D	BE9L	N790A		
Welsch	2/22/2025 19:21	2/22/2025 19:20	21R	D	P28A	N11CA		
Welsch	2/22/2025 19:25	2/22/2025 19:40	21R	A	AA5	N26103		
Welsch	2/22/2025	2/22/2025	21R	D	C172	N2108L		

	19:32	19:23						
Welsch	2/22/2025 19:33	2/22/2025 19:23	21R	D	C172	N2108L		
Welsch	2/22/2025 19:52	2/22/2025 19:51	21R	D	P28A	N296CA		
Welsch	2/22/2025 19:53	2/22/2025 19:53	21R	D	C172	N62855		
Welsch	2/22/2025 20:01	2/22/2025 19:47	21R	D	P28A	N743DS		
Welsch	2/22/2025 20:02	2/22/2025 19:47	21R	D	P28A	N743DS		
Welsch	2/22/2025 20:09	2/22/2025 19:47	21R	D	P28A	N743DS		
Welsch	2/22/2025 20:27	2/22/2025 20:26	21R	D	C172	N2108L		
Welsch	2/22/2025 20:31	2/22/2025 20:26	21R	D	C172	N2108L		
Welsch	2/22/2025 21:09	2/22/2025 20:52	21L	D	PC12	N420GX		
Feldman	2/22/2025 22:56	2/22/2025 22:30	21L	D	GALX	N445ST		
Feldman	2/23/2025 3:18	2/23/2025 3:20	UNK	A	B06	N355AE		
Feldman	2/23/2025 3:20	2/23/2025 3:20	UNK	A	B06	N355AE		
Feldman	2/23/2025 3:24	2/23/2025 3:20	21L	D	C208	N414CY		
Welsch	2/23/2025 3:25	2/23/2025 3:24	21L	D	C208	N414CY		
Feldman	2/23/2025 3:58	2/23/2025 4:07	21R	D	B06	N355AE		
Welsch	2/23/2025 4:09	2/23/2025 4:07	21R	D	B06	N355AE		
Welsch	2/23/2025 4:13	2/23/2025 4:07	21R	D	B06	N355AE		
Feldman	2/23/2025 6:25	2/23/2025 6:20	21R	D	C25B	N850CP		
Welsch	2/23/2025 6:52	2/23/2025 6:48	03L	D	P28A	CXK220		
Fox	2/23/2025 6:52	2/23/2025 6:48	03L	D	P28A	CXK220		
Welsch	2/23/2025 6:59	2/23/2025 6:41	21L	D	F2TH	N1925		
Welsch	2/23/2025 7:05	2/23/2025 6:41	21L	D	F2TH	N1925		
Welsch	2/23/2025 7:09	2/23/2025 6:59	21R	D	P28A	CXK220		

Welsch	2/23/2025 7:14	2/23/2025 7:07	21L	D	GLEX	LXJ93		
Welsch	2/23/2025 7:26	2/23/2025 7:25	21R	D	P28A	N296CA		
Welsch	2/23/2025 7:31	2/23/2025 7:25	21R	D	P28A	N296CA		
Welsch	2/23/2025 7:40	2/23/2025 7:30	21R	D	P28A	CXK220		
Welsch	2/23/2025 7:49	2/23/2025 7:48	21R	D	P28A	N6919J		
Welsch	2/23/2025 7:50	2/23/2025 7:48	21R	D	P28A	N6919J		
Welsch	2/23/2025 7:53	2/23/2025 7:47	21R	D	C72R	N106AF		
Welsch	2/23/2025 7:56	2/23/2025 7:56	21R	T	P28A	N11CA		
Welsch	2/23/2025 7:58	2/23/2025 7:56	21R	T	P28A	N11CA		
Welsch	2/23/2025 7:59	2/23/2025 7:56	21R	T	P28A	N11CA		
Welsch	2/23/2025 8:02	2/23/2025 7:56	21R	T	P28A	N11CA		
Welsch	2/23/2025 8:03	2/23/2025 7:56	21R	T	P28A	N11CA		
Welsch	2/23/2025 8:07	2/23/2025 7:43	21L	D	BE40	WUP676		
Welsch	2/23/2025 8:09	2/23/2025 7:43	21L	D	BE40	WUP676		
Welsch	2/23/2025 8:10	2/23/2025 7:43	21L	D	BE40	WUP676		
Welsch	2/23/2025 8:13	2/23/2025 7:43	21L	D	BE40	WUP676		
Welsch	2/23/2025 8:14	2/23/2025 8:13	21R	T	P28A	N703CA		
Welsch	2/23/2025 8:16	2/23/2025 8:13	21R	T	P28A	N703CA		
Welsch	2/23/2025 8:21	2/23/2025 8:13	21R	T	P28A	N703CA		
Welsch	2/23/2025 8:27	2/23/2025 8:13	21R	T	P28A	N703CA		
Welsch	2/23/2025 8:32	2/23/2025 8:42	21L	D	C172	N62855		
Welsch	2/23/2025 8:38	2/23/2025 8:42	21L	D	C172	N62855		
Welsch	2/23/2025 8:43	2/23/2025 8:42	21L	D	C172	N62855		
Welsch	2/23/2025	2/23/2025	21L	D	C172	N62855		

	8:43	8:42						
Welsch	2/23/2025 8:46	2/23/2025 8:45	21R	T	B06	N239AE		
Welsch	2/23/2025 8:49	2/23/2025 8:33	21L	D	E545	N313CF		
Welsch	2/23/2025 8:53	2/23/2025 8:47	21L	D	PC12	N302MR		
Welsch	2/23/2025 8:55	2/23/2025 8:47	21L	D	PC12	N302MR		
Welsch	2/23/2025 8:57	2/23/2025 8:47	21L	D	PC12	N302MR		
Welsch	2/23/2025 9:00	2/23/2025 8:56	21R	D	P28A	N296CA		
Welsch	2/23/2025 9:02	2/23/2025 8:56	21R	D	P28A	N296CA		
Welsch	2/23/2025 9:05	2/23/2025 8:56	21R	D	P28A	N296CA		
Welsch	2/23/2025 9:07	2/23/2025 8:56	21R	D	P28A	N296CA		
Welsch	2/23/2025 9:12	2/23/2025 9:15	21L	D	P28A	CXK220		
Welsch	2/23/2025 9:16	2/23/2025 9:15	21L	D	P28A	CXK220		
Welsch	2/23/2025 9:23	2/23/2025 9:13	21R	D	C82R	N7389T		
Welsch	2/23/2025 9:25	2/23/2025 9:13	21R	D	C82R	N7389T		
Welsch	2/23/2025 9:31	2/23/2025 9:30	21R	D	P28A	N11CA		
Welsch	2/23/2025 9:32	2/23/2025 9:30	21R	D	P28A	N11CA		
Welsch	2/23/2025 9:41	2/23/2025 9:40	21R	T	P28A	CXK446		
Welsch	2/23/2025 9:57	2/23/2025 9:40	21R	T	C172	N19646		
Welsch	2/23/2025 10:01	2/23/2025 9:47	21R	D	S22T	N195WP		
Welsch	2/23/2025 10:19	2/23/2025 10:03	21R	D	M20P	N414MS		
Welsch	2/23/2025 10:28	2/23/2025 10:03	21R	D	M20P	N414MS		
Dengler	2/23/2025 10:34	2/23/2025 10:38	21R	T	P28A	N6919J		
Fox	2/23/2025 10:34	2/23/2025 10:38	21R	T	P28A	N6919J		
Feldman	2/23/2025 10:34	2/23/2025 10:09	21R	T	P28A	N296CA		

Welsch	2/23/2025 10:38	2/23/2025 10:38	21R	T	P28A	N6919J		
Welsch	2/23/2025 10:49	2/23/2025 10:48	21R	D	P28A	N11CA		
Welsch	2/23/2025 10:55	2/23/2025 10:42	21L	D	BE30	WUP850		
Welsch	2/23/2025 11:13	2/23/2025 11:12	21R	T	C172	N62855		
Welsch	2/23/2025 11:20	2/23/2025 11:20	21R	D	C172	A68C68		
Welsch	2/23/2025 11:25	2/23/2025 11:24	21R	T	P28A	N703CA		
Welsch	2/23/2025 11:30	2/23/2025 11:15	21L	D	S22T	N195WP		
Welsch	2/23/2025 11:32	2/23/2025 11:15	21L	D	S22T	N195WP		
Welsch	2/23/2025 11:34	2/23/2025 11:15	21L	D	S22T	N195WP		
Welsch	2/23/2025 11:36	2/23/2025 11:15	21L	D	S22T	N195WP		
Welsch	2/23/2025 11:39	2/23/2025 11:38	21R	T	P28A	N296CA		
Welsch	2/23/2025 11:39	2/23/2025 11:38	21R	T	P28A	N296CA		
Welsch	2/23/2025 11:46	2/23/2025 11:27	21R	T	C172	N73924		
Welsch	2/23/2025 11:48	2/23/2025 11:47	21R	T	P28A	CXK220		
Welsch	2/23/2025 11:53	2/23/2025 11:53	03R	A	GLF6	N650TJ		
Welsch	2/23/2025 12:03	2/23/2025 12:05	21R	D	GLF5	N501QC		
Welsch	2/23/2025 12:36	2/23/2025 12:36	21R	T	C172	N6981H		
Welsch	2/23/2025 12:39	2/23/2025 12:36	21R	T	C172	N6981H		
Welsch	2/23/2025 12:41	2/23/2025 12:41	21R	T	C172	N62855		
Welsch	2/23/2025 12:44	2/23/2025 12:20	21L	D	P28A	N743DS		
Welsch	2/23/2025 12:46	2/23/2025 12:20	21L	D	P28A	N743DS		
Welsch	2/23/2025 12:46	2/23/2025 12:20	21L	D	P28A	N743DS		
Welsch	2/23/2025 12:49	2/23/2025 12:20	21L	D	P28A	N743DS		
Welsch	2/23/2025	2/23/2025	21L	D	BE36	N816LA		

	12:53	12:41						
Welsch	2/23/2025 12:54	2/23/2025 12:59	21L	D	E55P	EJA456		
Welsch	2/23/2025 12:59	2/23/2025 12:59	21L	D	E55P	EJA456		
Welsch	2/23/2025 13:01	2/23/2025 12:39	21R	T	P28A	CXK446		
Welsch	2/23/2025 13:04	2/23/2025 13:04	21R	T	SR20	N5347D		
Welsch	2/23/2025 13:05	2/23/2025 13:04	21R	T	SR20	N5347D		
Welsch	2/23/2025 13:06	2/23/2025 13:04	21R	T	SR20	N5347D		
Welsch	2/23/2025 13:09	2/23/2025 13:04	21R	T	SR20	N5347D		
Welsch	2/23/2025 13:10	2/23/2025 13:09	21R	T	P28A	N296CA		
Welsch	2/23/2025 13:12	2/23/2025 12:55	21L	D	BE30	WUP857		
Welsch	2/23/2025 13:15	2/23/2025 12:55	21L	D	BE30	WUP857		
Needle	2/23/2025 13:17	2/23/2025 13:23	UNK	A	C68A	EJA652		
Welsch	2/23/2025 13:18	2/23/2025 13:23	UNK	A	C68A	EJA652		
Welsch	2/23/2025 13:19	2/23/2025 13:18	21R	T	P28A	N730A		
Welsch	2/23/2025 13:21	2/23/2025 13:06	21R	T	P28R	N3231R		
Welsch	2/23/2025 13:21	2/23/2025 13:06	21R	T	P28R	N3231R		
Welsch	2/23/2025 13:23	2/23/2025 13:06	21R	T	P28R	N3231R		
Welsch	2/23/2025 13:24	2/23/2025 13:06	21R	T	P28R	N3231R		
Welsch	2/23/2025 13:28	2/23/2025 13:06	21R	T	P28R	N3231R		
Welsch	2/23/2025 13:30	2/23/2025 13:33	UNK	T	P28A	N11CA		
Welsch	2/23/2025 13:34	2/23/2025 13:33	UNK	T	P28A	N11CA		
Welsch	2/23/2025 13:36	2/23/2025 13:33	UNK	T	P28A	N11CA		
Welsch	2/23/2025 13:36	2/23/2025 13:33	UNK	T	P28A	N11CA		
Welsch	2/23/2025 13:38	2/23/2025 13:37	21R	D	P28R	N541HF		

Welsch	2/23/2025 13:40	2/23/2025 13:37	21R	D	P28R	N541HF		
Welsch	2/23/2025 13:41	2/23/2025 13:37	21R	D	P28R	N541HF		
Welsch	2/23/2025 13:47	2/23/2025 13:32	21R	T	C82T	N2247T		
Welsch	2/23/2025 13:48	2/23/2025 13:32	21R	T	C82T	N2247T		
Welsch	2/23/2025 13:49	2/23/2025 13:32	21R	T	C82T	N2247T		
Welsch	2/23/2025 13:51	2/23/2025 13:32	21R	T	C82T	N2247T		
Welsch	2/23/2025 13:52	2/23/2025 13:51	21R	T	C172	N62855		
Welsch	2/23/2025 13:58	2/23/2025 13:59	21L	D	C56X	GLI777		
Welsch	2/23/2025 14:00	2/23/2025 13:59	21L	D	C56X	GLI777		
Welsch	2/23/2025 14:16	2/23/2025 14:07	21R	T	C72R	N178AF		
Welsch	2/23/2025 14:22	2/23/2025 14:21	21R	T	P28A	N703CA		
Welsch	2/23/2025 14:25	2/23/2025 14:18	21R	D	C182	N21174		
Welsch	2/23/2025 14:26	2/23/2025 14:18	21R	D	C182	N21174		
Welsch	2/23/2025 14:30	2/23/2025 14:24	21R	D	P28A	N296CA		
Welsch	2/23/2025 14:32	2/23/2025 14:24	21R	D	P28A	N296CA		
Welsch	2/23/2025 14:35	2/23/2025 14:34	21R	D	P28A	CXK446		
Welsch	2/23/2025 14:36	2/23/2025 14:34	21R	D	P28A	CXK446		
Welsch	2/23/2025 14:42	2/23/2025 14:26	21R	D	SR22	N42TJ		
Welsch	2/23/2025 14:42	2/23/2025 14:26	21R	D	SR22	N42TJ		
Welsch	2/23/2025 14:47	2/23/2025 14:39	21R	D	CL60	N144MH		
Welsch	2/23/2025 14:50	2/23/2025 14:39	21R	D	CL60	N144MH		
Welsch	2/23/2025 14:52	2/23/2025 14:38	21L	D	C68A	EJA608		
Welsch	2/23/2025 14:54	2/23/2025 14:38	21L	D	C68A	EJA608		
Welsch	2/23/2025	2/23/2025	21L	D	C68A	EJA608		



	14:54	14:38						
Welsch	2/23/2025 14:57	2/23/2025 14:38	21L	D	C68A	EJA608		
Welsch	2/23/2025 14:58	2/23/2025 14:38	21L	D	C68A	EJA608		
Welsch	2/23/2025 15:00	2/23/2025 14:38	21L	D	C68A	EJA608		
Welsch	2/23/2025 15:01	2/23/2025 14:38	21L	D	C68A	EJA608		
Welsch	2/23/2025 15:05	2/23/2025 14:38	21L	T	P28A	N2551U		
Welsch	2/23/2025 15:06	2/23/2025 14:38	21L	T	P28A	N2551U		
Welsch	2/23/2025 15:11	2/23/2025 15:11	21L	D	PC12	N487PC		
Welsch	2/23/2025 15:12	2/23/2025 15:11	21L	D	PC12	N487PC		
Welsch	2/23/2025 15:12	2/23/2025 15:11	21L	D	PC12	N487PC		
Welsch	2/23/2025 15:14	2/23/2025 15:11	21L	D	PC12	N487PC		
Welsch	2/23/2025 15:16	2/23/2025 15:09	21L	D	BE40	WUP676		
Welsch	2/23/2025 15:16	2/23/2025 15:09	21L	D	BE40	WUP676		
Welsch	2/23/2025 15:18	2/23/2025 15:09	21L	D	BE40	WUP676		
Welsch	2/23/2025 15:18	2/23/2025 15:09	21L	D	BE40	WUP676		
Welsch	2/23/2025 15:19	2/23/2025 15:09	21L	D	BE40	WUP676		
Welsch	2/23/2025 15:20	2/23/2025 15:09	21L	D	BE40	WUP676		
Welsch	2/23/2025 15:23	2/23/2025 15:22	21R	T	C172	N62855		
Welsch	2/23/2025 15:24	2/23/2025 15:22	21R	T	C172	N62855		
Welsch	2/23/2025 15:25	2/23/2025 15:23	21R	T	P28A	N703CA		
Welsch	2/23/2025 15:27	2/23/2025 15:26	21L	D	CL60	EJA225		
Welsch	2/23/2025 15:31	2/23/2025 15:32	UNK	A	C68A	EJA927		
Welsch	2/23/2025 15:33	2/23/2025 15:32	UNK	A	C68A	EJA927		
Welsch	2/23/2025 15:35	2/23/2025 15:28	21L	D	G280	N284PC		

Welsch	2/23/2025 15:36	2/23/2025 15:28	21L	D	G280	N284PC		
Welsch	2/23/2025 15:39	2/23/2025 15:28	21R	D	C172	N961UT		
Welsch	2/23/2025 15:40	2/23/2025 15:39	21R	T	P28A	N296CA		
Welsch	2/23/2025 15:41	2/23/2025 15:39	21R	T	P28A	N296CA		
Welsch	2/23/2025 15:42	2/23/2025 15:31	21R	D	C182	N4468N		
Welsch	2/23/2025 15:49	2/23/2025 15:32	21R	T	P28R	N3231R		
Welsch	2/23/2025 15:52	2/23/2025 15:52	21R	D	CL60	EJMI 10		
Welsch	2/23/2025 15:55	2/23/2025 15:27	21L	D	P46T	N953CM		
Welsch	2/23/2025 15:57	2/23/2025 15:27	21L	D	P46T	N953CM		
Welsch	2/23/2025 16:01	2/23/2025 16:00	21L	D	C25A	N817MP		
Welsch	2/23/2025 16:08	2/23/2025 16:07	21R	T	P28A	N6919J		
Welsch	2/23/2025 16:09	2/23/2025 16:07	21R	T	P28A	N6919J		
Welsch	2/23/2025 16:13	2/23/2025 15:54	21L	D	SR22	N523KT		
Welsch	2/23/2025 16:19	2/23/2025 16:05	21R	T	C172	N314GT		
Welsch	2/23/2025 16:21	2/23/2025 16:05	21R	T	C172	N314GT		
Welsch	2/23/2025 16:24	2/23/2025 16:05	21R	T	C172	N314GT		
Welsch	2/23/2025 16:25	2/23/2025 16:09	21L	D	PC12	CNS226		
Welsch	2/23/2025 16:27	2/23/2025 16:09	21L	D	PC12	CNS226		
Welsch	2/23/2025 16:30	2/23/2025 16:18	21R	T	C82T	N2247T		
Welsch	2/23/2025 16:31	2/23/2025 16:18	21R	T	C82T	N2247T		
Welsch	2/23/2025 16:32	2/23/2025 16:18	21R	T	C82T	N2247T		
Welsch	2/23/2025 16:34	2/23/2025 16:45	03L	A	F2TH	DCMI 49 2		
Welsch	2/23/2025 16:39	2/23/2025 16:39	21L	D	LJ45	N670JM		
Welsch	2/23/2025	2/23/2025	21L	D	PC12	N728MG		

	16:44	16:35						
Welsch	2/23/2025 16:45	2/23/2025 16:35	21L	D	PC12	N728MG		
Welsch	2/23/2025 16:49	2/23/2025 16:48	21L	T	P28R	N541HF		
Welsch	2/23/2025 16:59	2/23/2025 16:51	21L	D	C550	N598KW		
Welsch	2/23/2025 17:03	2/23/2025 16:58	21L	D	F2TH	DCMI49 2		
Welsch	2/23/2025 17:04	2/23/2025 16:58	21L	D	F2TH	DCMI49 2		
Welsch	2/23/2025 17:07	2/23/2025 17:02	21L	D	BE20	N34LT		
Welsch	2/23/2025 17:11	2/23/2025 17:02	21L	D	BE20	N34LT		
Welsch	2/23/2025 17:14	2/23/2025 17:09	21L	D	G150	N101RX		
Welsch	2/23/2025 17:18	2/23/2025 17:09	21R	D	C172	N623KW		
Welsch	2/23/2025 17:19	2/23/2025 17:09	21R	D	C172	N623KW		
Welsch	2/23/2025 17:20	2/23/2025 17:09	21R	D	C172	N623KW		
Welsch	2/23/2025 17:22	2/23/2025 17:09	21R	D	C172	N623KW		
Welsch	2/23/2025 17:24	2/23/2025 17:23	21R	T	P28A	N730A		
Welsch	2/23/2025 17:25	2/23/2025 17:23	21R	T	P28A	N730A		
Welsch	2/23/2025 17:29	2/23/2025 17:20	21L	D	C680	EJA388		
Welsch	2/23/2025 17:31	2/23/2025 17:20	21L	D	C680	EJA388		
Welsch	2/23/2025 17:32	2/23/2025 17:11	21R	T	P28A	N287D		
Welsch	2/23/2025 17:32	2/23/2025 17:11	21R	T	P28A	N287D		
Welsch	2/23/2025 17:36	2/23/2025 17:11	21R	T	P28A	N287D		
Welsch	2/23/2025 17:38	2/23/2025 17:11	21R	T	P28A	N287D		
Welsch	2/23/2025 17:39	2/23/2025 17:24	21R	T	P28A	N11CA		
Welsch	2/23/2025 17:40	2/23/2025 17:24	21R	T	P28A	N11CA		
Welsch	2/23/2025 17:40	2/23/2025 17:24	21R	T	P28A	N11CA		

Welsch	2/23/2025 17:42	2/23/2025 17:44	21R	T	P28A	N703CA		
Welsch	2/23/2025 17:42	2/23/2025 17:44	21R	T	P28A	N703CA		
Welsch	2/23/2025 17:43	2/23/2025 17:44	21R	T	P28A	N703CA		
Welsch	2/23/2025 17:44	2/23/2025 17:44	21R	T	P28A	N703CA		
Welsch	2/23/2025 17:45	2/23/2025 17:44	21R	T	P28A	N703CA		
Welsch	2/23/2025 17:46	2/23/2025 17:46	21R	T	C172	N62855		
Welsch	2/23/2025 17:49	2/23/2025 17:46	21R	T	C172	N62855		
Welsch	2/23/2025 17:50	2/23/2025 17:46	21R	T	C172	N62855		
Welsch	2/23/2025 17:51	2/23/2025 17:26	21R	T	C172	N2108L		
Welsch	2/23/2025 17:52	2/23/2025 17:26	21R	T	C172	N2108L		
Welsch	2/23/2025 17:53	2/23/2025 17:26	21R	T	C172	N2108L		
Welsch	2/23/2025 17:55	2/23/2025 17:49	21L	D	GLEX	LXJ90		
Welsch	2/23/2025 17:58	2/23/2025 17:49	21L	D	GLEX	LXJ90		
Welsch	2/23/2025 18:01	2/23/2025 17:50	21R	T	C172	N7784G		
Welsch	2/23/2025 18:08	2/23/2025 18:02	21R	T	P28A	N6743F		
Welsch	2/23/2025 18:11	2/23/2025 18:02	21R	T	P28A	N6743F		
Welsch	2/23/2025 18:12	2/23/2025 18:02	21R	T	P28A	N6743F		
Welsch	2/23/2025 18:19	2/23/2025 18:11	UNK	O	SR22	N238AR		
Welsch	2/23/2025 18:22	2/23/2025 18:11	UNK	O	SR22	N238AR		
Welsch	2/23/2025 18:24	2/23/2025 18:11	UNK	O	SR22	N238AR		
Welsch	2/23/2025 18:29	2/23/2025 18:11	UNK	O	SR22	N238AR		
Welsch	2/23/2025 18:34	2/23/2025 18:36	21R	T	P28A	N11CA		
Welsch	2/23/2025 18:35	2/23/2025 18:36	21R	T	P28A	N11CA		
Welsch	2/23/2025	2/23/2025	21R	T	P28A	N11CA		

	18:37	18:36						
Welsch	2/23/2025 18:42	2/23/2025 18:24	21R	T	P28A	N2551U		
Welsch	2/23/2025 18:43	2/23/2025 18:24	21R	T	P28A	N2551U		
Welsch	2/23/2025 18:47	2/23/2025 18:24	21R	T	P28A	N2551U		
Welsch	2/23/2025 18:54	2/23/2025 18:48	21R	T	P28A	N6743F		
Welsch	2/23/2025 19:10	2/23/2025 19:14	21L	A	C680	EJA376		
Welsch	2/23/2025 20:01	2/23/2025 19:59	21R	D	P28A	N11CA		
Feldman	2/23/2025 21:11	2/23/2025 21:31	21L	A	C68A	EJA910		
Feldman	2/23/2025 22:48	2/23/2025 22:52	21L	A	GLF4	KPO495		
Welsch	2/24/2025 2:49	2/24/2025 2:44	21L	D	C208	N414CY		
Lowndes	2/24/2025 3:33	2/24/2025 3:24	03R	D	BE20	N28VU		
Welsch	2/24/2025 4:12	2/24/2025 4:00	27R	A	BE20	N143DE		
Welsch	2/24/2025 4:52	2/24/2025 4:52	UNK	D	C750	KOW125		
Feldman	2/24/2025 6:10	2/24/2025 5:56	03R	D	P28A	N6919J		
Feldman	2/24/2025 8:16	2/24/2025 8:19	03R	A	GA6C	N660DX		
Feldman	2/24/2025 8:20	2/24/2025 8:26	03R	A	BE20	WMN514		
Paskevich	2/24/2025 11:53	2/24/2025 12:07	03R	A	CL35	EJA742		
Paskevich	2/24/2025 12:05	2/24/2025 12:11	03R	A	BE40	N977JM		
Paskevich	2/24/2025 12:18	2/24/2025 12:23	03R	A	G150	N922LR		
Paskevich	2/24/2025 12:47	2/24/2025 12:39	UNK	O	C68A	EJA638		
Paskevich	2/24/2025 13:15	2/24/2025 13:21	03R	A	CL35	EJA773		
Paskevich	2/24/2025 13:24	2/24/2025 13:17	UNK	O	BE40	N432MA		
Paskevich	2/24/2025 13:28	2/24/2025 13:34	03R	A	BE30	WUP891		
Paskevich	2/24/2025 13:32	2/24/2025 13:34	03R	A	BE30	WUP891		

Paskevich	2/24/2025 14:13	2/24/2025 14:23	03R	A	BE36	N900AW		
Paskevich	2/24/2025 14:19	2/24/2025 14:23	03R	A	BE36	N900AW		
Paskevich	2/24/2025 14:41	2/24/2025 14:47	03R	A	F2TH	N49HT		
Paskevich	2/24/2025 14:47	2/24/2025 14:39	UNK	O	C25B	N525WL		
Paskevich	2/24/2025 15:30	2/24/2025 15:20	UNK	O	CL60	N60BS		
Paskevich	2/24/2025 15:33	2/24/2025 15:37	03R	A	C680	N259CK		
Paskevich	2/24/2025 15:42	2/24/2025 15:37	03R	A	C680	N259CK		
Paskevich	2/24/2025 16:35	2/24/2025 16:39	03R	A	PC12	N743SC		
Paskevich	2/24/2025 16:59	2/24/2025 17:20	03R	A	C68A	EJA506		
Paskevich	2/24/2025 17:20	2/24/2025 17:11	UNK	O	C68A	EJA957		
Paskevich	2/24/2025 17:23	2/24/2025 17:11	UNK	O	C68A	EJA957		
Lowndes	2/24/2025 18:30	2/24/2025 18:19	03L	T	P28A	N6919J		
Paskevich	2/24/2025 18:41	2/24/2025 18:33	UNK	O	C340	N340AJ		
Welsch	2/24/2025 19:23	2/24/2025 19:37	UNK	A	GLF5	N427HG		
Lowndes	2/24/2025 20:23	2/24/2025 20:03	03R	D	BE36	N8TZ		
Lowndes	2/24/2025 20:24	2/24/2025 20:03	03R	D	BE36	N8TZ		
Lowndes	2/24/2025 20:39	2/24/2025 20:29	03R	D	BE58	N889FT		
Lowndes	2/24/2025 20:39	2/24/2025 20:29	03R	D	BE58	N889FT		
Lowndes	2/24/2025 20:41	2/24/2025 20:29	03R	D	BE58	N889FT		
Lowndes	2/24/2025 20:46	2/24/2025 20:29	03R	D	BE58	N889FT		
Lowndes	2/24/2025 23:58	2/24/2025 23:35	03R	D	C172	N245AU		
Lowndes	2/25/2025 0:01							
Welsch	2/25/2025 2:50	2/25/2025 2:53	03R	A	BE20	N28VU		
Welsch	2/25/2025	2/25/2025	21L	D	C208	N414CY		

	2:54	2:46						
Welsch	2/25/2025 3:23	2/25/2025 3:26	03R	A	PC12	SKQ31		
Welsch	2/25/2025 3:32	2/25/2025 3:30	21R	D	AS50	N808GT		
Welsch	2/25/2025 5:34	2/25/2025 5:20	UNK	A	EC30	N332AM		
Feldman	2/25/2025 5:34	2/25/2025 5:34	21L	A	H25B	N154RR		
Kempter	2/25/2025 7:09	2/25/2025 6:52	21R	D	P28A	N1205T		
Kempter	2/25/2025 7:09	2/25/2025 6:52	21R	D	P28A	N1205T		
Paskevich	2/25/2025 7:42	2/25/2025 7:20	UNK	O	COL4	N1222G		
Feldman	2/25/2025 8:13	2/25/2025 8:17	21L	A	HDJT	N815JJ		
Paskevich	2/25/2025 9:30	2/25/2025 9:13	21L	D	C560	N840AA		
Paskevich	2/25/2025 9:51	2/25/2025 9:25	UNK	O	C172	N54015		
Feldman	2/25/2025 14:13	2/25/2025 14:15	03L	T	BE76	N6711G		
Paskevich	2/25/2025 15:23	2/25/2025 15:06	21L	D	H25B	N240V		
Welsch	2/25/2025 15:24	2/25/2025 15:12	21R	D	C172	N2108L		
Paskevich	2/25/2025 15:28	2/25/2025 15:06	21L	D	H25B	N240V		
Welsch	2/25/2025 15:49	2/25/2025 15:45	21R	D	C310	N991GJ		
Paskevich	2/25/2025 15:50	2/25/2025 15:38	UNK	O	SR22	N224RJ		
Welsch	2/25/2025 15:52	2/25/2025 15:40	21R	T	C172	N161GT		
Paskevich	2/25/2025 15:54	2/25/2025 15:38	UNK	O	SR22	N224RJ		
Welsch	2/25/2025 16:01	2/25/2025 16:00	21R	T	P28A	N6919J		
Paskevich	2/25/2025 16:04	2/25/2025 15:59	UNK	D	EC30	N382AM		
Welsch	2/25/2025 16:07	2/25/2025 15:51	21R	D	C172	N19646		
Welsch	2/25/2025 16:22	2/25/2025 16:05	21L	D	BE20	CTN585		
Welsch	2/25/2025 16:27	2/25/2025 16:11	21L	D	C550	N896CG		

Welsch	2/25/2025 16:35	2/25/2025 16:11	21L	D	C550	N896CG		
Welsch	2/25/2025 16:38	2/25/2025 16:24	21R	T	C172	N7784G		
Welsch	2/25/2025 16:41	2/25/2025 16:34	21R	T	P28A	N703CA		
Welsch	2/25/2025 16:48	2/25/2025 16:47	21L	T	P28A	N296CA		
Welsch	2/25/2025 16:51	2/25/2025 16:47	21L	T	P28A	N296CA		
Welsch	2/25/2025 16:59	2/25/2025 16:37	21R	D	P28A	NIT253		
Welsch	2/25/2025 17:00	2/25/2025 16:41	21R	T	SR20	N622BW		
Welsch	2/25/2025 17:02	2/25/2025 16:41	21R	T	SR20	N622BW		
Welsch	2/25/2025 17:07	2/25/2025 16:54	21R	T	C172	N623KW		
Welsch	2/25/2025 17:08	2/25/2025 16:54	21R	T	C172	N623KW		
Welsch	2/25/2025 17:10	2/25/2025 16:47	21R	T	C172	N745DC		
Welsch	2/25/2025 17:37	2/25/2025 17:39	03L	A	SR22	N553LB		
Paskevich	2/25/2025 17:40	2/25/2025 17:46	03R	A	S22T	N54FM		
Welsch	2/25/2025 17:53	2/25/2025 17:57	03R	A	PC12	N539PE		
Paskevich	2/25/2025 17:59	2/25/2025 18:01	03R	A	H25B	N383MV		
Paskevich	2/25/2025 18:00	2/25/2025 18:01	03R	A	H25B	N383MV		
Welsch	2/25/2025 18:25	2/25/2025 18:26	03R	A	GLF4	TIV241		
Welsch	2/25/2025 19:13	2/25/2025 18:46	21R	D	P28A	N743DS		
Welsch	2/25/2025 20:25	2/25/2025 20:16	UNK	D	C172	N7784G		
Fox	2/25/2025 20:51	2/25/2025 20:35	21L	D	C68A	EJA919		
Kempter	2/25/2025 21:50	2/25/2025 21:57	21R	D	P28A	N11CA		
Welsch	2/25/2025 21:57	2/25/2025 21:52	21L	D	LJ45	N41UA		
Welsch	2/25/2025 21:59	2/25/2025 21:52	21L	D	LJ45	N41UA		
Welsch	2/25/2025	2/25/2025	21L	D	LJ45	N41UA		



	22:00	21:52						
Kempter	2/25/2025 22:02	2/25/2025 21:57	21R	D	P28A	N11CA		
Welsch	2/25/2025 22:02	2/25/2025 21:57	21R	D	P28A	N11CA		
Kempter	2/25/2025 22:02	2/25/2025 21:57	21R	D	P28A	N11CA		
Welsch	2/25/2025 22:11	2/25/2025 21:57	21R	D	P28A	N11CA		
Kempter	2/25/2025 22:11	2/25/2025 22:28	21L	A	GALX	N723RH		
Welsch	2/25/2025 22:30	2/25/2025 22:23	21L	D	PC12	SKQ31		
Welsch	2/25/2025 22:31	2/25/2025 22:23	21L	D	PC12	SKQ31		
Lowndes	2/25/2025 23:31	2/25/2025 23:24	UNK	O	PC12	LBQ782		
Welsch	2/26/2025 0:20	2/26/2025 0:24	03R	A	PC12	SKQ31		
Feldman	2/26/2025 2:50	2/26/2025 2:46	21L	D	C208	N414CY		
Lowndes	2/26/2025 5:34	2/26/2025 5:31	03L	D	SR22	N553LB		
Kempter	2/26/2025 7:14	2/26/2025 7:13	21R	T	P28A	N11CA		
Kempter	2/26/2025 7:16	2/26/2025 7:09	21L	D	BE40	RVJ412		
Kempter	2/26/2025 7:17	2/26/2025 7:09	21L	D	BE40	RVJ412		
Kempter	2/26/2025 7:20	2/26/2025 7:05	21R	T	C172	N7339M		
Kempter	2/26/2025 7:21	2/26/2025 7:05	21R	T	C172	N7339M		
Kempter	2/26/2025 7:27	2/26/2025 7:05	21R	T	C172	N7339M		
Kempter	2/26/2025 7:38	2/26/2025 7:27	21R	D	C172	N161GT		
Kempter	2/26/2025 7:44	2/26/2025 7:28	21R	T	PIAT	N227AT		
Kempter	2/26/2025 7:44	2/26/2025 7:28	21R	T	PIAT	N227AT		
Kempter	2/26/2025 7:44	2/26/2025 7:28	21R	T	PIAT	N227AT		
Kempter	2/26/2025 7:47	2/26/2025 7:28	21R	T	PIAT	N227AT		
Welsch	2/26/2025 15:01	2/26/2025 15:00	21R	T	P28A	N481A		

Welsch	2/26/2025 15:03	2/26/2025 14:50	21L	D	C172	N19646		
Paskevich	2/26/2025 15:05	2/26/2025 14:56	UNK	O	CL30	N700BC		
Welsch	2/26/2025 15:05	2/26/2025 14:50	21L	D	C172	N19646		
Welsch	2/26/2025 15:06	2/26/2025 14:50	21L	D	C172	N19646		
Welsch	2/26/2025 15:15	2/26/2025 15:15	21L	D	PC12	N265NX		
Welsch	2/26/2025 15:18	2/26/2025 15:15	21L	D	G280	N270PC		
Welsch	2/26/2025 15:24	2/26/2025 15:23	21L	D	F2TH	N733A		
Welsch	2/26/2025 15:24	2/26/2025 15:23	21L	D	F2TH	N733A		
Welsch	2/26/2025 15:27	2/26/2025 15:27	21L	D	M20P	N824MM		
Welsch	2/26/2025 15:28	2/26/2025 15:27	21L	D	M20P	N824MM		
Welsch	2/26/2025 15:29	2/26/2025 15:27	21L	D	M20P	N824MM		
Welsch	2/26/2025 15:31	2/26/2025 15:31	21L	D	GLF5	N60PA		
Welsch	2/26/2025 15:31	2/26/2025 15:31	21L	D	GLF5	N60PA		
Welsch	2/26/2025 15:32	2/26/2025 15:31	21L	D	GLF5	N60PA		
Welsch	2/26/2025 15:32	2/26/2025 15:31	21L	D	GLF5	N60PA		
Welsch	2/26/2025 15:34	2/26/2025 15:33	UNK	D	LJ31	N412SW		
Welsch	2/26/2025 15:35	2/26/2025 15:34	21R	D	P28A	N11CA		
Welsch	2/26/2025 15:43	2/26/2025 15:19	21L	D	P180	N71BS		
Welsch	2/26/2025 15:43	2/26/2025 15:19	21L	D	P180	N71BS		
Welsch	2/26/2025 15:46	2/26/2025 15:19	21L	D	P180	N71BS		
Welsch	2/26/2025 15:48	2/26/2025 15:48	21R	D	P28A	N703CA		
Welsch	2/26/2025 15:48	2/26/2025 15:48	21R	D	P28A	N703CA		
Welsch	2/26/2025 15:49	2/26/2025 15:48	21R	D	P28A	N703CA		
Welsch	2/26/2025	2/26/2025	21R	D	P28A	N703CA		

	15:51	15:48						
Welsch	2/26/2025 15:52	2/26/2025 15:48	21R	D	P28A	N703CA		
Welsch	2/26/2025 15:56	2/26/2025 15:58	21R	D	C172	N62855		
Welsch	2/26/2025 15:59	2/26/2025 15:58	21R	D	C172	N62855		
Welsch	2/26/2025 16:03	2/26/2025 15:58	21R	D	C172	N62855		
Welsch	2/26/2025 16:04	2/26/2025 16:03	21R	D	P28R	N322CA		
Welsch	2/26/2025 16:06	2/26/2025 15:47	21R	D	C172	N73924		
Welsch	2/26/2025 16:23	2/26/2025 16:24	21L	D	PC12	N221PC		
Welsch	2/26/2025 16:24	2/26/2025 16:24	21L	D	PC12	N221PC		
Welsch	2/26/2025 16:25	2/26/2025 16:24	21L	D	PC12	N221PC		
Welsch	2/26/2025 16:28	2/26/2025 16:24	21L	D	PC12	N221PC		
Welsch	2/26/2025 16:28	2/26/2025 16:24	21L	D	PC12	N221PC		
Welsch	2/26/2025 16:32	2/26/2025 16:24	21R	D	BE40	N500TH		
Paskevich	2/26/2025 16:35	2/26/2025 16:16	UNK	O	C172	N738KP		
Welsch	2/26/2025 16:37	2/26/2025 16:30	21L	D	C56X	EJA686		
Welsch	2/26/2025 16:43	2/26/2025 16:13	21R	T	AA5	N26103		
Welsch	2/26/2025 16:53	2/26/2025 16:53	21R	T	P28A	N703CA		
Welsch	2/26/2025 16:54	2/26/2025 16:53	21R	T	P28A	N703CA		
Welsch	2/26/2025 16:58	2/26/2025 16:57	21R	T	P28A	N11CA		
Welsch	2/26/2025 17:01	2/26/2025 16:57	21R	T	P28A	N11CA		
Welsch	2/26/2025 17:06	2/26/2025 17:05	21R	D	C172	N6981H		
Welsch	2/26/2025 17:23	2/26/2025 17:14	21L	D	C421	N382BW		
Welsch	2/26/2025 17:24	2/26/2025 17:23	21R	T	P28A	N730A		
Welsch	2/26/2025 17:30	2/26/2025 17:23	21R	T	P28A	N730A		

Welsch	2/26/2025 17:39	2/26/2025 17:44	21L	D	G280	N270PC		
Welsch	2/26/2025 17:46	2/26/2025 17:44	21L	D	G280	N270PC		
Welsch	2/26/2025 17:48	2/26/2025 17:44	21L	D	G280	N270PC		
Welsch	2/26/2025 17:57	2/26/2025 17:38	21L	T	SR20	N6583C		
Welsch	2/26/2025 17:58	2/26/2025 17:38	21L	T	SR20	N6583C		
Welsch	2/26/2025 18:01	2/26/2025 17:38	21L	T	SR20	N6583C		
Welsch	2/26/2025 18:03	2/26/2025 17:38	21L	T	SR20	N6583C		
Welsch	2/26/2025 18:05	2/26/2025 17:55	21L	D	H25B	N944BB		
Welsch	2/26/2025 18:08	2/26/2025 17:58	21L	D	C25A	N909HT		
Welsch	2/26/2025 18:09	2/26/2025 18:09	21L	D	C56X	N818BL		
Welsch	2/26/2025 18:13	2/26/2025 17:43	21L	D	C68A	EJA650		
Welsch	2/26/2025 18:17	2/26/2025 18:16	21R	D	P28A	CXK410		
Welsch	2/26/2025 18:18	2/26/2025 18:16	21R	D	P28A	CXK410		
Welsch	2/26/2025 18:21	2/26/2025 18:04	21R	D	C172	N7784G		
Welsch	2/26/2025 18:29	2/26/2025 18:28	21R	D	P28A	CXK410		
Welsch	2/26/2025 18:35	2/26/2025 18:25	21R	T	C72R	N178AF		
Welsch	2/26/2025 18:36	2/26/2025 18:25	21R	T	C72R	N178AF		
Welsch	2/26/2025 18:39	2/26/2025 18:25	21R	T	C72R	N178AF		
Welsch	2/26/2025 18:40	2/26/2025 18:39	21R	D	P28A	CXK410		
Welsch	2/26/2025 18:44	2/26/2025 18:39	21R	D	P28A	CXK410		
Clair	2/26/2025 18:45	2/26/2025 18:50	21L	A	C25B	NXC255	NMS01	84.6
Welsch	2/26/2025 18:49	2/26/2025 18:52	21R	D	P28A	CXK410		
Welsch	2/26/2025 18:53	2/26/2025 18:52	21R	D	P28A	CXK410		
Welsch	2/26/2025	2/26/2025	21R	D	P28A	CXK410		

	18:54	18:52						
Welsch	2/26/2025 19:13	2/26/2025 18:54	21R	T	C172	N161GT		
Welsch	2/26/2025 19:21	2/26/2025 19:21	21R	D	BE36	N247JW		
Welsch	2/26/2025 19:37	2/26/2025 19:45	21R	D	P28R	N322CA		
Welsch	2/26/2025 19:45	2/26/2025 19:45	21R	D	P28R	N322CA		
Welsch	2/26/2025 19:48	2/26/2025 19:45	21R	D	P28R	N322CA		
Welsch	2/26/2025 20:09	2/26/2025 20:08	21R	D	C172	N62855		
Welsch	2/26/2025 20:11	2/26/2025 20:08	21R	D	C172	N62855		
Welsch	2/26/2025 20:13	2/26/2025 20:08	21R	D	C172	N62855		
Welsch	2/26/2025 20:24	2/26/2025 20:13	21L	D	C25C	N444CU		
Welsch	2/26/2025 20:35	2/26/2025 20:42	21R	D	P28A	N703CA		
Welsch	2/26/2025 20:42	2/26/2025 20:42	21R	D	P28A	N703CA		
Welsch	2/26/2025 21:07	2/26/2025 20:59	21R	D	P28A	N1205T		
Welsch	2/26/2025 22:38	2/26/2025 22:31	21L	D	PC12	SKQ31		
Feldman	2/26/2025 23:53	2/26/2025 23:54	21L	A	C750	WUP908		
Feldman	2/27/2025 0:26	2/27/2025 0:29	03R	A	PC12	SKQ31		
Welsch	2/27/2025 1:56	2/27/2025 1:59	21L	A	P28A	N1205T		
Welsch	2/27/2025 2:18	2/27/2025 2:22	03R	A	C208	N414CY		
Welsch	2/27/2025 2:37	2/27/2025 2:35	21L	D	C208	N414CY		
Welsch	2/27/2025 3:50	2/27/2025 3:43	21L	D	PC12	SKQ31		
Welsch	2/27/2025 5:12	2/27/2025 5:21	27L	A	MD11	N276UP		
Feldman	2/27/2025 5:47	2/27/2025 5:42	21L	D	E35L	T7CAT		
Welsch	2/27/2025 15:02	2/27/2025 15:02	21L	D	SR22	N553LB		
Welsch	2/27/2025 15:09	2/27/2025 15:00	21L	D	PC12	N593FD		

Welsch	2/27/2025 15:11	2/27/2025 15:00	21L	D	PC12	N593FD		
Welsch	2/27/2025 15:12	2/27/2025 15:11	21L	D	SR22	N238RS		
Welsch	2/27/2025 15:12	2/27/2025 15:11	21L	D	SR22	N238RS		
Welsch	2/27/2025 15:43	2/27/2025 15:30	21L	D	C414	N414GD		
Welsch	2/27/2025 15:58	2/27/2025 15:33	21L	D	PA46	N647SJ		
Welsch	2/27/2025 16:06	2/27/2025 16:12	UNK	A	LJ45	NJM2022		
Welsch	2/27/2025 16:08	2/27/2025 16:03	21L	D	H25B	SJJ431		
Welsch	2/27/2025 16:10	2/27/2025 16:03	21L	D	H25B	SJJ431		
Welsch	2/27/2025 16:13	2/27/2025 16:13	21R	D	C560	N100WP		
Welsch	2/27/2025 16:22	2/27/2025 16:19	21R	D	SR22	N131EA		
Welsch	2/27/2025 16:23	2/27/2025 16:19	21R	D	SR22	N131EA		
Welsch	2/27/2025 16:34	2/27/2025 16:25	21L	D	BE58	N1566W		
Welsch	2/27/2025 16:35	2/27/2025 16:09	21R	T	SR20	N622BW		
Welsch	2/27/2025 16:48	2/27/2025 16:48	21L	D	BE20	N72HT		
Welsch	2/27/2025 17:04	2/27/2025 16:49	21L	D	GLF4	FTH154		
Welsch	2/27/2025 17:09	2/27/2025 16:49	21L	D	GLF4	FTH154		
Welsch	2/27/2025 17:27	2/27/2025 17:26	21R	D	SR22	N825FW		
Welsch	2/27/2025 18:46	2/27/2025 18:41	21R	D	S22T	N791GT		
Welsch	2/27/2025 18:58	2/27/2025 18:41	21R	D	SR20	N6583C		
Welsch	2/27/2025 19:16	2/27/2025 19:13	21L	D	F2TH	N717TF		
Welsch	2/27/2025 19:25	2/27/2025 19:24	21R	D	C172	N6981H		
Welsch	2/27/2025 19:30	2/27/2025 19:29	21L	D	C56X	N83GB		
Welsch	2/27/2025 19:41	2/27/2025 19:21	21R	D	SR20	N225RP		
Welsch	2/27/2025	2/27/2025	21R	D	SR20	N225RP		

	19:47	19:21						
Welsch	2/27/2025 19:49	2/27/2025 19:21	21R	D	SR20	N225RP		
Welsch	2/27/2025 19:53	2/27/2025 19:28	21R	D	C172	N161GT		
Welsch	2/27/2025 19:55	2/27/2025 19:28	21R	D	C172	N161GT		
Welsch	2/27/2025 20:06	2/27/2025 20:15	34	T	SR20	N102GG		
Kempter	2/27/2025 20:21	2/27/2025 20:20	21R	T	P28A	N6919J		
Welsch	2/27/2025 20:22	2/27/2025 20:20	21R	T	P28A	N6919J		
Kempter	2/27/2025 20:22	2/27/2025 20:20	21R	T	P28A	N6919J		
Welsch	2/28/2025 2:48	2/28/2025 2:51	03R	A	C208	N414CY		
Feldman	2/28/2025 3:10	2/28/2025 3:05	21L	D	C208	N414CY		
Welsch	2/28/2025 3:11	2/28/2025 3:05	21L	D	C208	N414CY		
Feldman	2/28/2025 3:15	2/28/2025 3:09	21L	D	PC12	SKQ65		
Welsch	2/28/2025 3:16	2/28/2025 3:05	21L	D	C208	N414CY		
Welsch	2/28/2025 4:27	2/28/2025 3:59	21L	D	PC24	N274AH		
Welsch	2/28/2025 4:33	2/28/2025 4:56	21L	A	C25A	N59FH		
Welsch	2/28/2025 4:53	2/28/2025 4:56	21L	A	C25A	N59FH		
Kempter	2/28/2025 6:44	2/28/2025 6:33	21L	D	P28A	N6743F		
Kempter	2/28/2025 6:45	2/28/2025 6:33	21L	D	P28A	N6743F		
Kempter	2/28/2025 6:47	2/28/2025 6:33	21L	D	P28A	N6743F		
Kempter	2/28/2025 6:47	2/28/2025 6:33	21L	D	P28A	N6743F		
Kempter	2/28/2025 6:51	2/28/2025 6:38	21R	D	P28A	CXK446		
Kempter	2/28/2025 6:58	2/28/2025 6:38	21R	D	P28A	CXK446		
Kempter	2/28/2025 7:18	2/28/2025 7:17	21R	D	P28A	CXK446		
Kempter	2/28/2025 7:21	2/28/2025 7:15	21R	D	GLST	N678DS		

Kempter	2/28/2025 7:26	2/28/2025 7:26	21R	T	P28A	N703CA		
Kempter	2/28/2025 7:27	2/28/2025 7:26	21R	T	P28A	N703CA		
Kempter	2/28/2025 7:34	2/28/2025 7:34	21R	T	P28A	N6919J		
Kempter	2/28/2025 7:36	2/28/2025 7:34	21R	T	P28A	N6919J		
Kempter	2/28/2025 7:38	2/28/2025 7:34	21R	T	P28A	N6919J		
Kempter	2/28/2025 7:42	2/28/2025 7:27	21R	D	P28A	CXK446		
Cone	2/28/2025 7:42	2/28/2025 7:27	21R	D	P28A	CXK446	NMS02	69.8
Kempter	2/28/2025 7:47	2/28/2025 7:27	21R	D	P28A	CXK446		
Kempter	2/28/2025 7:47	2/28/2025 7:27	21R	D	P28A	CXK446		
Kempter	2/28/2025 7:53	2/28/2025 7:27	21R	D	P28A	CXK446		
Kempter	2/28/2025 7:58	2/28/2025 7:46	21R	D	C82T	N2247T		
Kempter	2/28/2025 7:58	2/28/2025 7:46	21R	D	C82T	N2247T		
Kempter	2/28/2025 7:59	2/28/2025 7:46	21R	D	C82T	N2247T		
Kempter	2/28/2025 8:03	2/28/2025 7:42	UNK	O	P208	N891TA		
Paskevich	2/28/2025 12:39	2/28/2025 12:44	03R	A	CL30	VJA508		
Paskevich	2/28/2025 12:44	2/28/2025 12:44	03R	A	C56X	EJA592		
Paskevich	2/28/2025 12:47	2/28/2025 12:54	03R	A	E55P	LX302		
Paskevich	2/28/2025 12:49	2/28/2025 12:55	03R	A	SF50	N621LC		
Feldman	2/28/2025 13:12	2/28/2025 13:12	03R	D	E300	N244JT		
Paskevich	2/28/2025 14:13	2/28/2025 14:16	03R	A	G280	N268PC		
Paskevich	2/28/2025 14:28	2/28/2025 14:16	UNK	O	BE35	N7903M		
Welsch	2/28/2025 15:14	2/28/2025 15:05	21R	T	BE33	N3827Q		
Welsch	2/28/2025 15:15	2/28/2025 15:05	21R	T	BE33	N3827Q		
Welsch	2/28/2025	2/28/2025	21R	D	P28A	N4489X		

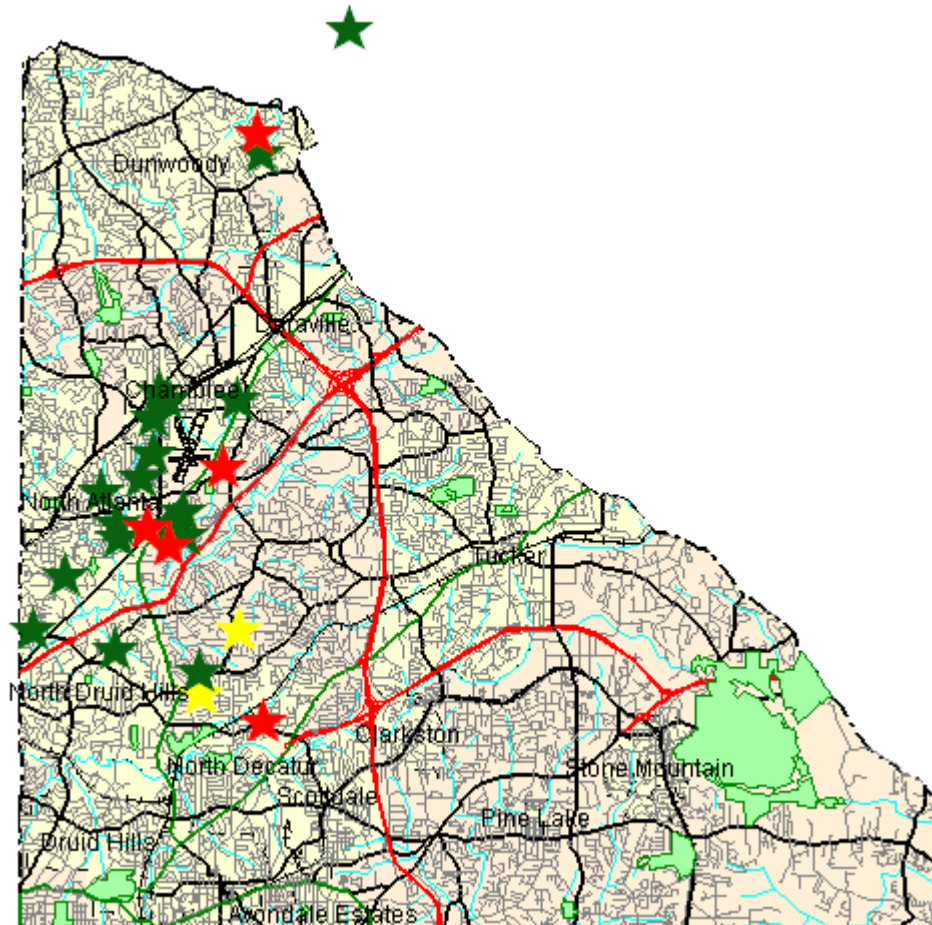





	15:23	15:04						
Welsch	2/28/2025 15:24	2/28/2025 15:04	21R	D	P28A	N4489X		
Welsch	2/28/2025 15:26	2/28/2025 15:23	21R	D	M20P	N824MM		
Welsch	2/28/2025 15:33	2/28/2025 15:25	21L	D	B350	WUP834		
Welsch	2/28/2025 15:38	2/28/2025 15:32	21R	T	COL4	N2528T		
Welsch	2/28/2025 15:39	2/28/2025 15:32	21R	T	COL4	N2528T		
Welsch	2/28/2025 15:39	2/28/2025 15:32	21R	T	COL4	N2528T		
Welsch	2/28/2025 15:47	2/28/2025 15:46	21L	D	PC12	N56JW		
Welsch	2/28/2025 16:11	2/28/2025 15:52	21R	T	C172	N73924		
Welsch	2/28/2025 16:16	2/28/2025 16:07	21R	T	C172	N5082G		
Welsch	2/28/2025 16:26	2/28/2025 16:13	21R	T	P28A	N1205T		
Welsch	2/28/2025 16:29	2/28/2025 16:17	21L	D	SF50	N327PK		
Welsch	2/28/2025 16:41	2/28/2025 16:28	21L	D	C56X	VNT452		
Welsch	2/28/2025 16:44	2/28/2025 16:42	21L	D	C550	N627BC		
Welsch	2/28/2025 16:51	2/28/2025 16:35	21R	T	P28A	N2551U		
Welsch	2/28/2025 16:53	2/28/2025 16:35	21R	T	P28A	N2551U		
Welsch	2/28/2025 16:59	2/28/2025 16:58	21R	T	T6	N92796		
Welsch	2/28/2025 17:12	2/28/2025 16:50	21L	D	LJ60	HPJ358		
Welsch	2/28/2025 17:42	2/28/2025 17:13	21R	D	C172	N404DC		
Welsch	2/28/2025 17:59	2/28/2025 17:57	21L	D	C650	N90AS		
Welsch	2/28/2025 18:04	2/28/2025 17:58	21L	D	BE20	N686CF		
Welsch	2/28/2025 18:06	2/28/2025 17:58	21L	D	BE20	N686CF		
Welsch	2/28/2025 18:07	2/28/2025 17:58	21L	D	BE20	N686CF		
Welsch	2/28/2025 18:08	2/28/2025 17:58	21L	D	BE20	N686CF		

Welsch	2/28/2025 18:09	2/28/2025 17:58	21L	D	BE20	N686CF		
Welsch	2/28/2025 18:13	2/28/2025 18:15	21L	D	P28A	N11CA		
Welsch	2/28/2025 18:14	2/28/2025 18:15	21L	D	P28A	N11CA		
Welsch	2/28/2025 18:15	2/28/2025 18:15	21L	D	P28A	N11CA		
Welsch	2/28/2025 18:16	2/28/2025 18:15	21L	D	P28A	N11CA		
Welsch	2/28/2025 18:17	2/28/2025 18:15	21L	D	P28A	N11CA		
Welsch	2/28/2025 18:19	2/28/2025 18:05	21R	D	C172	N73924		
Welsch	2/28/2025 18:21	2/28/2025 18:05	21R	D	C172	N73924		
Welsch	2/28/2025 18:22	2/28/2025 18:02	21R	D	BE76	N6711G		
Welsch	2/28/2025 18:23	2/28/2025 18:02	21R	D	BE76	N6711G		
Welsch	2/28/2025 18:27	2/28/2025 18:02	21R	D	BE76	N6711G		
Welsch	2/28/2025 18:32	2/28/2025 18:10	21L	D	C56X	JRE846		
Welsch	2/28/2025 18:34	2/28/2025 18:10	21L	D	C56X	JRE846		
Welsch	2/28/2025 18:34	2/28/2025 18:10	21L	D	C56X	JRE846		
Welsch	2/28/2025 18:36	2/28/2025 18:10	21L	D	C56X	JRE846		
Welsch	2/28/2025 18:40	2/28/2025 18:26	21R	T	C172	N2108L		
Welsch	2/28/2025 18:41	2/28/2025 18:26	21R	T	C172	N2108L		
Welsch	2/28/2025 18:45	2/28/2025 18:40	21R	D	SR22	N166RT		
Welsch	2/28/2025 18:58	2/28/2025 18:43	21L	D	BE40	N157PW		
Cone	2/28/2025 20:02	2/28/2025 19:56	21R	D	GLF6	N524EA		
Cone	2/28/2025 20:07	2/28/2025 19:56	21R	D	GLF6	N524EA		
Welsch	2/28/2025 22:13	2/28/2025 22:13	21L	D	PC12	SKQ31		
Welsch	2/28/2025 23:35	2/28/2025 23:33	21L	D	C172	N961AU		
Lowndes	2/28/2025	2/28/2025	21L	A	C210	GTX06		

	23:39	23:45						
--	-------	-------	--	--	--	--	--	--

# Disturbance Location Pin Map – February 2025



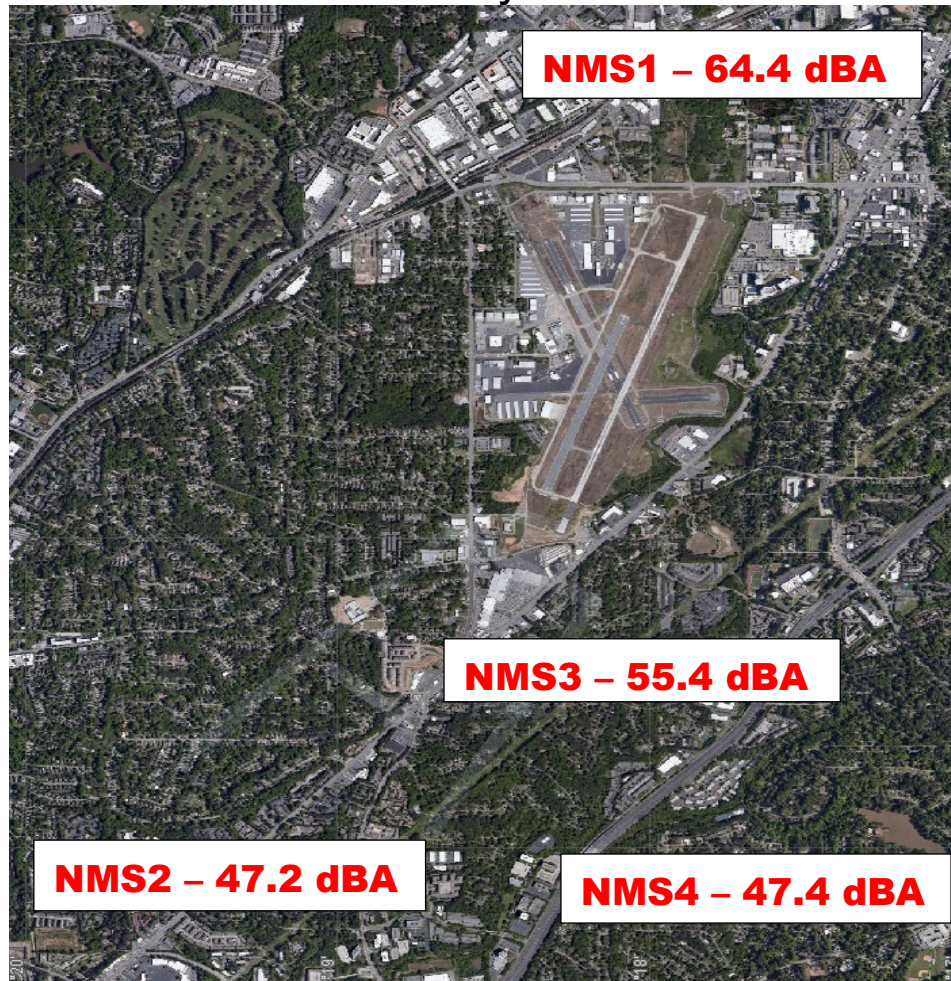
-  1-5 Complaints
-  6-10 Complaints
-  11+ Complaints

## Complainants with Complaints Total

(0 Complainant(s) outside of DeKalb County; and 0 unknown)

# Monthly Noise Levels at Monitors

February 2025



## Noise Terminology

- *Decibels (dB) are the unit of measurement on the loudness scale. Decibels that a human can hear are called “A-weighted” or “dBA” on the sound frequency scale.*
- *The decibel scale is logarithmic, not linear. The smallest detectable change 1 dB; 3 dB for a human is readily detectable; 10 dB seems twice as loud.*
- *Lmax – The maximum A-weighted sound level for a given event – the highest level registered on the scale or meter; is not related to the duration for the event.*
- *DNL – A 24-hour time-averaged sound exposure level. It is the noise metric of choice in aircraft sound level measurement. It is also used to define noise contours of equal exposure. All Federal agencies have adopted DNL (LDNA) as the metric for airport noise analysis. (Day Night Level) (Day Night Level A-weighted)*
- *Leq – The steady A-weighted sound level over any specified period. It is used to identify the average sound level over a given period of time.*

# Voluntary Curfew Operations & Operators Summary/Letter Status

## Operations Summary:

The airport identified a total of **382 (99.7%)** of the 383 operations during the voluntary curfew period (11PM-6AM) during the month of **February 2025**. Of the **382** identified operations, **207 (54.1%)** were classified as **medical transport (e.g., Med-Evac) or other critical flights**. These aircraft are identified in **red bold font** below.

- Out of the *identified* operations, **80 one-time** operations were conducted during this period.
- Out of the *identified* operations, **302 multi-time** operations were conducted during this period, (i.e., sum of all aircraft operations in which an aircraft flew more than once during the voluntary curfew).

## Operators Identified / Multi-Use:

**140** operators were identified using the airport during the voluntary curfew period (does not include unknown aircraft).

**60** operators were identified using the airport during the voluntary curfew period for 2 or more times during the month.

**22** multi-use operators were identified as Med-Evac and/or emergency flights.

## Complaints received from operations conducted during the voluntary curfew period:

**1,719** complaints were received during **February 2025**.

**158 (18.4%)** complaints were received for operations conducted during the voluntary curfew period (**including** those complaints that were found to be non-correlated or indirect).

## This Month – February 2025 N#'s (Multi-Use):

**35 Aircraft with 2 Operations** (**PXG985**, N808GT, N108RLL, N154RR, EJA142, **N382AM**, N651PB, **N407LS**, N1044M, N127MJ, N85KM, CNS5, N9WW, N4488H, CNS1030, **N179SF**, N651WB, JLG429, N693AM, N1932K, N747WL, CSI571, N833JB, N245AU, **FTD504**, EJA853, **N895CR**, N59FH, JAS59, N609KG, **RAX131**, N628EF, N133PE, **N649AE**, N296CA)

1 Aircraft with 5 Operations (**N355AE**)

**8 Aircraft with 3 Operations** (N131EA, N16134, **N893AU**,

3 Aircraft with 7 Operations (**N208LS**, N28VU, **N445CH**)

N280PC, N703CA, N553LB, N555PH, **N553AE**)

2 Aircraft with 8 Operations (**PXG691**, N577XW)

**8 Aircraft with 4 Operations** (SKQ65, N560LX, N11CA,

1 Aircraft with 12 Operations (**N883AE**)

**N542MT, N133LN, N6919J, N274AH, N332AM**)

1 Aircraft with 49 Operations (**N414CY**)

1 Aircraft with 73 Operations (**SKQ31**)

**Last Month – January 2025 N#'s (Multi-Use):**

**48 Aircraft with 2 Operations** (N858WK, N6919J, PXG210, N301AZ., N741AM, N156RE, N895CR, N314GT, N623HD, N318DC, N704DA, N325AM, N780GS, N327TW, N240MW, N329GS, N240SH, N133LN, RAX123, N332CA, KFS68, N3337M, N703CA, N16BG, N719AV, N179SF, N75XL, SIS53, N80EA, LXJ469, N858ZK, WUP856, N88UA, GTX502, N971MC, N1EA, PRD71, CYT72, N28VU, N577XW, N296AE, N59FH, N416SF, WUP32, WUP918, WUP891, XLS501, N4840W, XSR361)

**9 Aircraft with 3 Operations** (OLV915, **N165AE**, N1065B, **N332AM**, **N883AE**, **PXG691**, N306BD, EJA918, TWY2741)

**2 Aircraft with 4 Operations** (JSL169, **N382AM**)

**1 Aircraft with 5 Operations** (**N553AE**)

**3 Aircraft with 6 Operations** (**SKQ39**)

**2 Aircraft with 8 Operations** (**N208LS**, **N445CH**)

**1 Aircraft with 49 Operations** (**N414CY**)

**1 Aircraft with 72 Operations** (**SKQ31**)

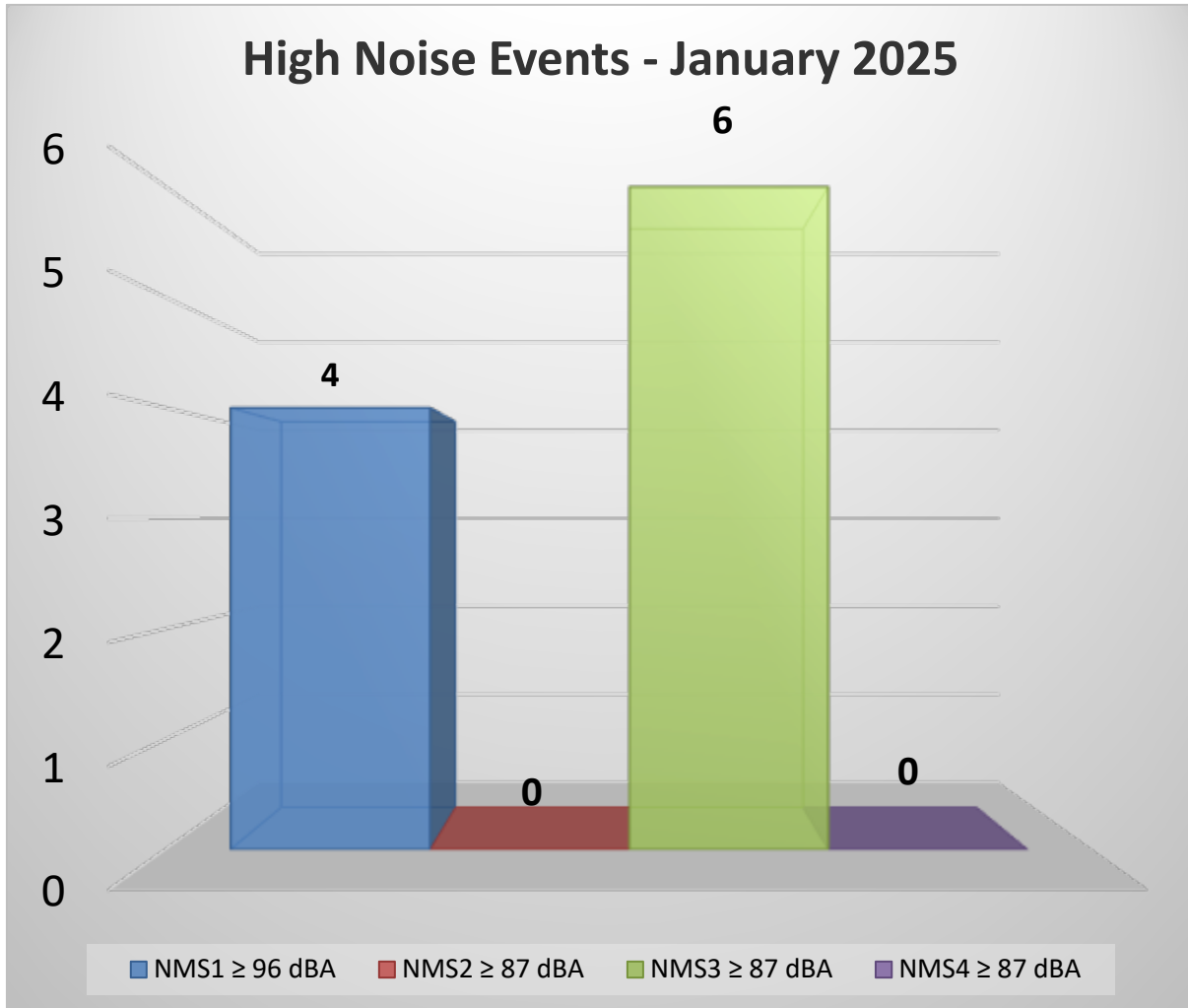
---

A total of **175** advisory letters were sent to aircraft operators flying during the voluntary curfew period in the month of **February** who were not identified as Med-Evac and/or other emergency flights.

---

# High Noise Event Threshold

The high noise event threshold was developed to work with pilots in methods and techniques that could reduce aircraft noise levels in and around PDK and its residential areas. Noise Monitoring Station (NMS) 1 is located in a commercial district and is set at **96 dBA Lmax** or greater. All other monitors, NMS2, 3, & 4 are located in residential areas and are set at **87 dBA Lmax** or greater. A Total of **10** advisory letters were sent out this month for aircraft identified as Exceeding PDK's high noise event threshold.



## February 2025

*No Aircraft with multiple events*



December 2024

1 Aircraft with 4 High Noise Event (N165AE)

## **Comments/Concerns?**

Please visit [www.pdkairport.org](http://www.pdkairport.org) for airport information. You February also contact the airport about noise concerns at [pdknoise@dekalbcountyga.gov](mailto:pdknoise@dekalbcountyga.gov) or call the noise hotline at (770) 936-5442.