

WHAT IS STORMWATER POLLUTION?

Stormwater pollution is runoff that contains pollutants such as debris, chemicals, litter and other contaminants. Stormwater pollution flows into our stormwater drainage system which discharges into streams, creeks, lakes, and rivers. These waterbodies are used for swimming and fishing, and supplies use with our drinking water.

POLLUTANT EXAMPLES

- Sediment from soil erosion
- Motor Oil
- Fertilizers, Herbicides & Pesticides
- Pet waste
- Litter
- Grass Clippings & Leaves

HOW CAN I GET INVOLVED?

- Limit fertilizer use; when used, apply in dry weather.
- If possible, do not leave soil exposed. If soil is exposed, cover with seed and straw.
- Pick up pet waste and dispose of it in the trash.
- Reuse or Recycle.
- Participate in the Storm Drain Marking (SDM) Program. This is a small effort which brings large results! For more information on the County's SDM program or how to get involved, contact the Roads & Drainage Department at 404- 297-3840 or rad_customer service@dekalbcountyga.gov



REQUEST FOR ASSISTANCE

DEKALB COUNTY PUBLIC WORKS
ROAD & DRAINAGE DIVISION
 727 Camp Road, Decatur, GA 30032

Customer Service # (404) 297-3840
 Fax # (404) 294-2880

Request for Assistance

Submitted by:

- Fax Office Visit Public Meeting
 Other _____

Type of Assistance Requested:

- Pothole Paving
 Pond Pipes
 Flooding Curbs
 Drainage Traffic
 Stormwater Sidewalk
 Rock Program Drainage
 Other _____

Address of Problem: _____

Reported By: _____

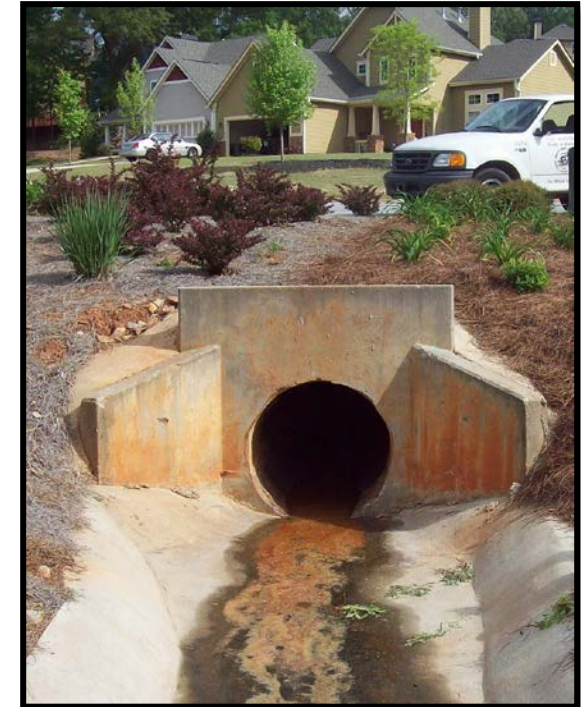
- Organization Homeowner

Daytime Phone #: _____

Condition Description: _____

To report a stormwater violation please call our Line at 404-294-2007

DEKALB COUNTY ROADS & DRAINAGE DIVISION



Stormwater Management

Roads & Drainage
 Division 727 Camp Road
 Decatur, Georgia 30032
 404-297-3840

rad_customerservice@dekalbcountyga.gov



WHAT IS A STORMWATER DRAINAGE SYSTEM?

A stormwater drainage system is comprised of catch basins, ditches, stormwater pipes, ponds and other stormwater drainage structures. The system is designed to drain stormwater runoff from impervious surfaces such as paved streets, parking lots, footpaths, sidewalks, and roofs and convey it through the system to a final discharge point normally a creek, stream or river.

The goal is to discharge stormwater runoff without adverse on- or off-site impacts and without increasing downstream erosion or sedimentation. In DeKalb County the stormwater drainage system is separate from the sanitary sewer system. This means that stormwater does not get treated at a water treatment plant. It is up to us to keep the waterbodies clean.

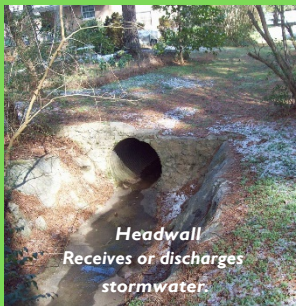
WHAT ARE STORMWATER STRUCTURES?



Storm Drain
Receives excess water in rain events



Detention Pond
Temporarily reduces the rate of runoff



Headwall
Receives or discharges stormwater



Control Structure
Controls the flow of water in designated areas

STORMWATER MANAGEMENT BACKGROUND

The DeKalb County Stormwater Management Program was designed to provide stormwater services and to comply with Georgia EPD and Federal EPA stormwater regulations. Stormwater management is the use of specific practices, constructed or natural, to reduce, temporarily detain and slow down stormwater runoff. It also helps remove pollutants from stormwater runoff.

In order to provide stormwater services, the County, established a Stormwater Utility (SWU) that became effective January 1, 2004. With the utility a SWU fee was also established. The SWU fee funds the maintenance, installation and repair of stormwater drainage structures in the County. The calculation of the SWU fee is based on the property type and the total amount of impervious surface on the property. The SWU fee is assessed annually and can be found on the property tax bill.

Having properly functioning stormwater drainage structures satisfies an essential regulatory purpose and improves quality of life by controlling where stormwater runoff flows and how it is discharged. It also reduces flooding, erosion and water pollution caused by stormwater runoff. As DeKalb County continues to grow the growth can create stormwater challenges such as:

- Increased requests; for stormwater drainage services; increased erosion;
- Additional structures to maintain;
- More frequent maintenance and repair of aging stormwater drainage infrastructure.

For more information visit:

www.dekalbcountyga.gov/roads-drainage/stormwater-program

WHAT IS STORMWATER?

Stormwater is any precipitation including rain, hail, and snow. In a natural landscape, without any development, stormwater is absorbed into soil or falls into bodies of water such as creeks, streams and rivers. Development disturbs the natural landscape, interrupts the absorption of stormwater and causes stormwater runoff. Stormwater runoff is precipitation that flows over developed surfaces such as pavement, roofs and other surfaces that prevent stormwater from naturally soaking into the ground. The stormwater runoff that is created flows into storm drains, stormwater pipes and drainage ditches. The volume and velocity of the stormwater runoff can cause:

- Flooding;
- Stream bank erosion;
- Increased turbidity (muddiness created by stirred up sediment) from erosion;
- Stream habitat degradation;
- Infrastructure damage;
- Contaminated streams and rivers

