

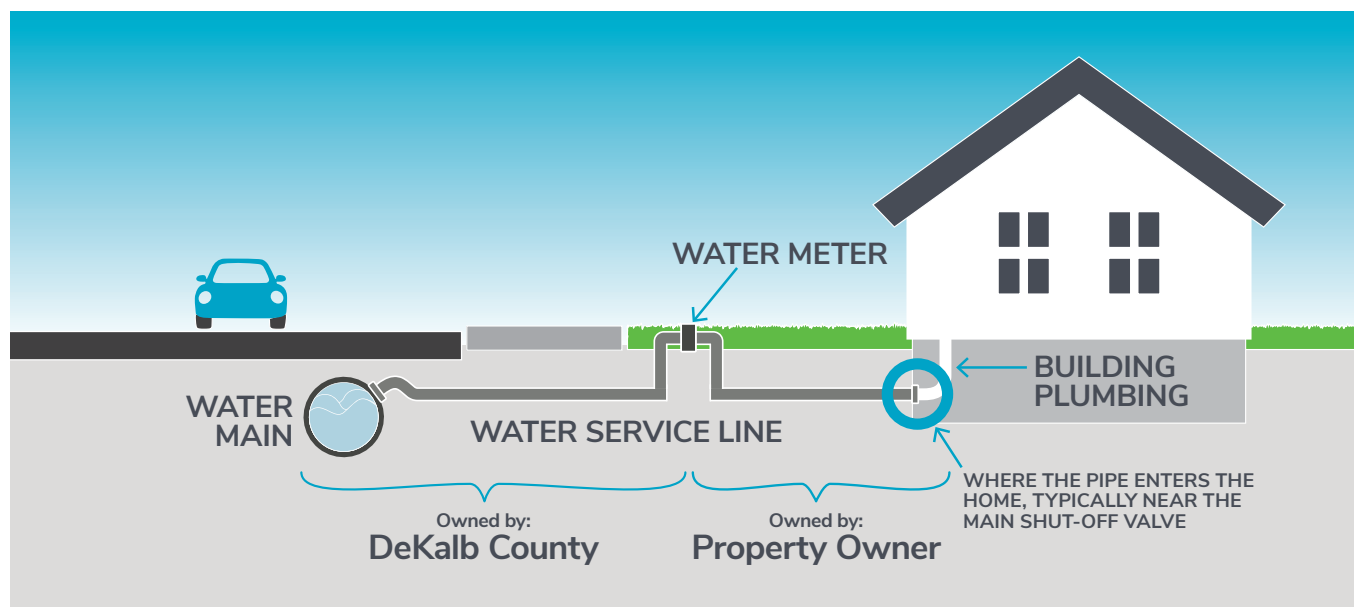


# Service Line Ownership



Ownership of the service line is a shared responsibility between the DeKalb County Department of Watershed Management and property owners and depends on your water meter location.

Your water meter is typically in a pit outside of your property. The DeKalb County Department of Watershed Management (DWM) is responsible for the service line from the water main in the street to the meter, including the water meter. The property owner is responsible for the service line from the meter to the connection to the plumbing inside the home.



## Water Meter – Outside Home

Since the service line is mostly buried underground, we will need your help to identify the material of your service line where can be seen inside your home or building. You can use this guidance to determine your service line material.

After identifying your service line material, please complete the form at the “Check Your Line” link on the website so that the DeKalb County DWM can update our records. An accurate inventory of service line materials helps us provide guidance on protecting yourself from risks of lead exposure through drinking water.





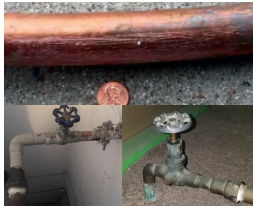
### LEAD

- Gray or silver
- Scratch test: Shiny and silver (soft and scratches easily)
- Magnets will not stick
- Widens at base and forms a 'bulb'



### GALVANIZED STEEL

- Gray or silver
- Scratch test: no visible scratch on surface
- Magnets will stick
- Has threads at connections



### COPPER

- Dull brown; greenish
- Scratch test: same color as penny
- Magnets will not stick



### BRASS

- Brown; can have green corrosion spots
- Scratch test: gold color
- Magnets will not stick
- Has threads at connections



### PLASTIC

- Smooth and red, blue, black, or white

Examples of Service Line Materials.

### QUESTIONS?



CALL: 770-270-6243

www.

VISIT: [www.dekalbcountyga.gov/watershed-management/LCRR](http://www.dekalbcountyga.gov/watershed-management/LCRR)



DeKalb County  
GEORGIA